

# Cynomolgus CD3E&CD3D/CD3 epsilon&CD3 delta Protein

Cat. No. CD3-CM101

## Description

<b>Source</b>	Recombinant Cynomolgus CD3E&CD3D/CD3 epsilon&CD3 delta Protein is expressed from HEK293 with His tag and Flag tag at the C-Terminus. It contains Gln22-Asp117(CD3E) & Phe22-Ala105(CD3D).
<b>Accession</b>	Q95LI5.2(CD3E)&Q95LI8(CD3D)
<b>Molecular Weight</b>	The protein has a predicted MW of 11.93 kDa (CD3E) and 10.55 kDa (CD3D). Due to glycosylation, the protein migrates to 13-20 kDa based on Tris-Bis PAGE result.
<b>Endotoxin</b>	Less than 1EU per µg by the LAL method.
<b>Purity</b>	> 95% as determined by Tris-Bis PAGE > 95% as determined by HPLC

## Formulation and Storage

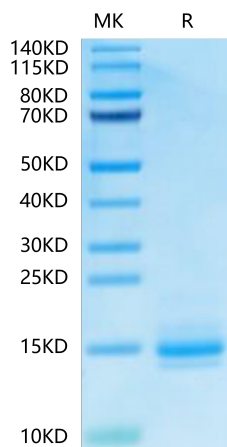
<b>Formulation</b>	Lyophilized from 0.22 µm filtered solution in PBS (pH 7.4). Normally 8% trehalose is added as protectant before lyophilization.
<b>Reconstitution</b>	Centrifuge the tube before opening. Reconstituting to a concentration more than 100 µg/ml is recommended. Dissolve the lyophilized protein in distilled water.
<b>Storage</b>	-20 to -80°C for 12 months as supplied from date of receipt. -20 to -80°C for 3-6 months in unopened state after reconstitution. 2-8°C for 2-7 days after reconstitution. Recommend to aliquot the protein into smaller quantities for optimal storage. Please minimize freeze-thaw cycles.

## Background

T-cell surface glycoprotein CD3 epsilon&CD3 delta chain, also known as CD3E & CD3D, are single-pass type I membrane proteins. When antigen presenting cells (APCs) activate T-cell receptor (TCR), TCR-mediated signals are transmitted across the cell membrane by the CD3 chains CD3D, CD3E, CD3G and CD3Z. All CD3 chains contain immunoreceptor tyrosine-based activation motifs (ITAMs) in their cytoplasmic domain.

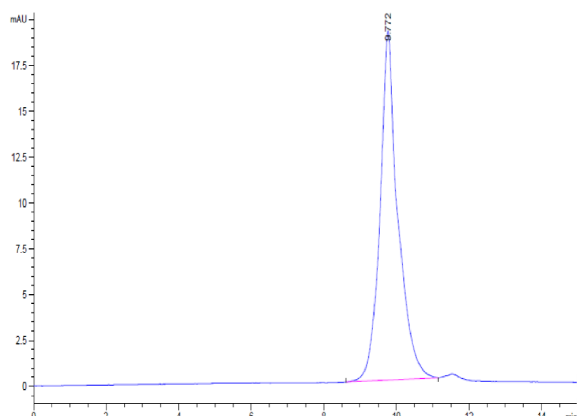
## Assay Data

### Tris-Bis PAGE



Cynomolgus CD3E&CD3D on Tris-Bis PAGE under reduced condition. The purity is greater than 95%.

### SEC-HPLC



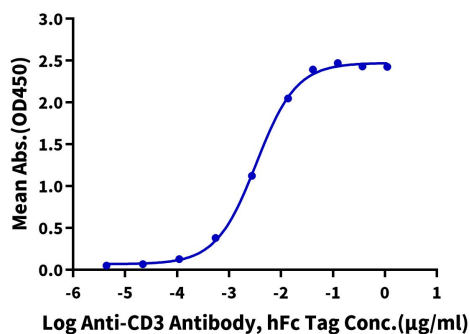
The purity of Cynomolgus CD3E&CD3D is greater than 95% as determined by SEC-HPLC.

Assay Data

ELISA Data

**Cynomolgus CD3E&CD3D, His Tag ELISA**

0.05µg Cynomolgus CD3E&CD3D, His Tag Per Well



Immobilized Cynomolgus CD3E&CD3D, His Tag at 0.5µg/ml (100µl/well) on the plate. Dose response curve for Anti-CD3 Antibody, hFc Tag with the EC50 of 3.3ng/ml determined by ELISA.