

Cynomolgus CD3E&CD3G/CD3 epsilon&CD3 gamma Protein

Cat. No. CD3-CM102

Description

Source	Recombinant Cynomolgus CD3E&CD3G/CD3 epsilon&CD3 gamma Protein is expressed from HEK293 with His tag and Flag tag at the C-Terminus. It contains Gln22-Asp117(CD3E) & Gln23-Thr113(CD3G).
Accession	Q95LI5.2 (CD3E)&Q95LI7 (CD3G)
Molecular Weight	The protein has a predicted MW of 11.93 kDa (CD3E) and 11.52 kDa (CD3G). Due to glycosylation, the protein migrates to 13-23 kDa based on Bis-Tris PAGE result.
Endotoxin	Less than 1 EU per µg by the LAL method.
Purity	>95% as determined by Bis-Tris PAGE >95% as determined by HPLC

Formulation and Storage

Formulation	Lyophilized from 0.22 µm filtered solution in PBS (pH 7.4). Normally 8% trehalose is added as protectant before lyophilization.
Reconstitution	Centrifuge the tube before opening. Reconstituting to a concentration more than 100 µg/ml is recommended. Dissolve the lyophilized protein in distilled water.
Storage	-20 to -80°C for 12 months as supplied from date of receipt. -80°C for 3 months after reconstitution. Recommend to aliquot the protein into smaller quantities for optimal storage. Please minimize freeze-thaw cycles.

Background

T-cell surface glycoprotein CD3 epsilon&CD3 gamma chain, also known as CD3E&CD3G, are single-pass type I membrane proteins. When antigen presenting cells (APCs) activate T-cell receptor (TCR), TCR-mediated signals are transmitted across the cell membrane by the CD3 chains CD3D, CD3E, CD3G and CD3Z. All CD3 chains contain immunoreceptor tyrosine-based activation motifs (ITAMs) in their cytoplasmic domain.

Assay Data

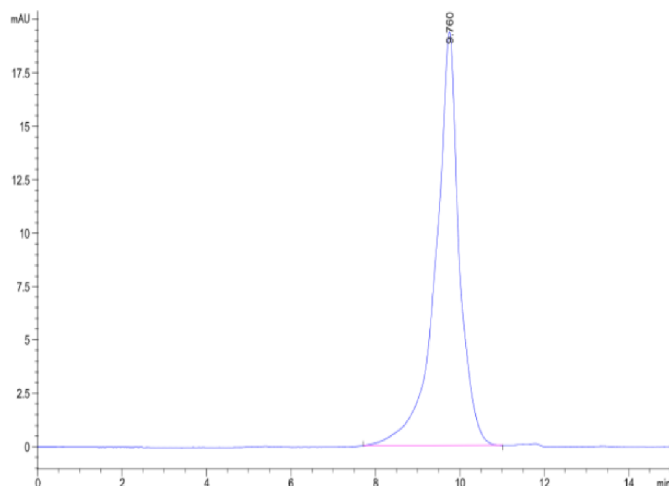
Bis-Tris PAGE



Cynomolgus CD3E&CD3G on Bis-Tris PAGE under reduced condition. The purity is greater than 90%.

SEC-HPLC

Assay Data

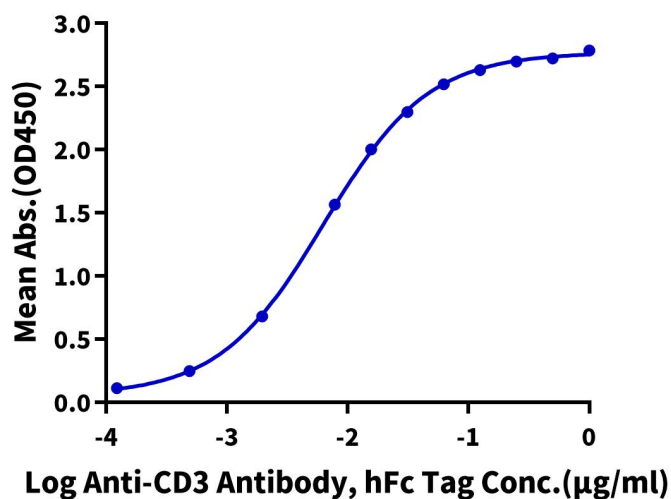


The purity of Cynomolgus CD3E&CD3G is greater than 90% as determined by SEC-HPLC.

ELISA Data

Cynomolgus CD3E&CD3G, His Tag ELISA

0.1µg Cynomolgus CD3E&CD3G, His Tag Per Well



Immobilized Cynomolgus CD3E&CD3G, His Tag at 1 µg/ml (100 µl/Well) on the plate. Dose response curve for Anti-CD3 Antibody, hFc Tag with the EC50 of 6.3 ng/ml determined by ELISA (QC Test).