

# Cynomolgus CD3E&CD3G/CD3 epsilon&CD3 gamma Protein

Cat. No. CD3-CM103

Description	
Source	Recombinant Cynomolgus CD3E&CD3G/CD3 epsilon&CD3 gamma Protein is expressed from HEK293 with Flag tag at the C-terminus of subunit CD3E and His tag at the C-terminus of subunit CD3G. It contains Gln22-Asp117 (CD3E) and Gln23-Thr113 (CD3G).
Accession	Q95LI5.2(CD3E)&Q95LI7(CD3G)
Molecular Weight	The protein has a predicted MW of 16.17 kDa (CD3E) and 15.98 kDa (CD3G). Due to glycosylation, the protein migrates to 20-24 kDa and 26-30 kDa based on Bis-Tris PAGE result.
Endotoxin	Less than 0.1 EU per µg by the LAL method.
Purity	> 95% as determined by Bis-Tris PAGE > 95% as determined by HPLC

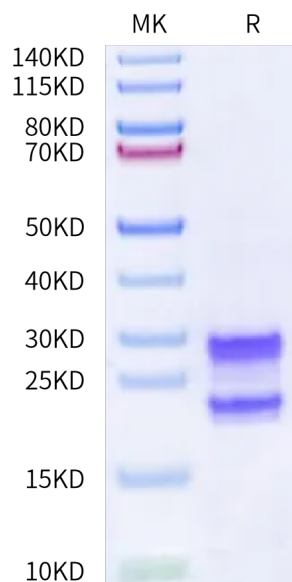
Formulation and Storage	
Formulation	Lyophilized from 0.22 µm filtered solution in PBS (pH 7.4). Normally 8% trehalose is added as protectant before lyophilization.
Reconstitution	Dissolve the lyophilized protein in distilled water. Please refer to the Certificate of Analysis for detailed instructions.
Storage	-20 to -80°C for 12 months as supplied from date of receipt. -80°C for 3 months after reconstitution. Recommend to aliquot the protein into smaller quantities for optimal storage. Please minimize freeze-thaw cycles.

**Background**

T-cell surface glycoprotein CD3 epsilon&CD3 gamma chain, also known as CD3E&CD3G, are single-pass type I membrane proteins. When antigen presenting cells (APCs) activate T-cell receptor (TCR), TCR-mediated signals are transmitted across the cell membrane by the CD3 chains CD3D, CD3E, CD3G and CD3Z. All CD3 chains contain immunoreceptor tyrosine-based activation motifs (ITAMs) in their cytoplasmic domain.

## Assay Data

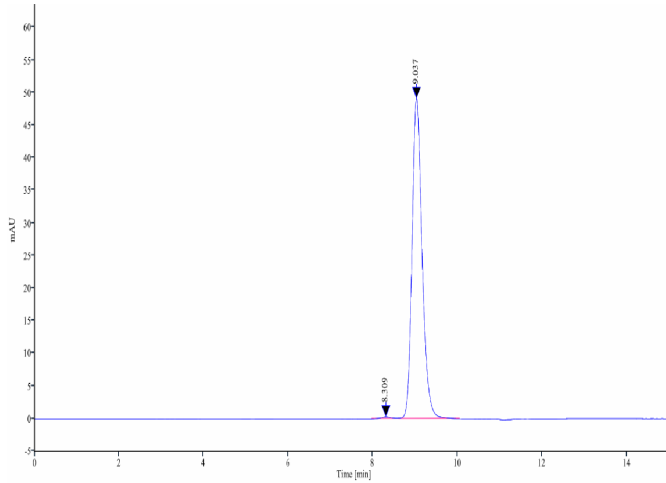
### Bis-Tris PAGE



Cynomolgus CD3E&CD3G on Bis-Tris PAGE under reduced condition. The purity is greater than 95%.

### SEC-HPLC

**Assay Data**

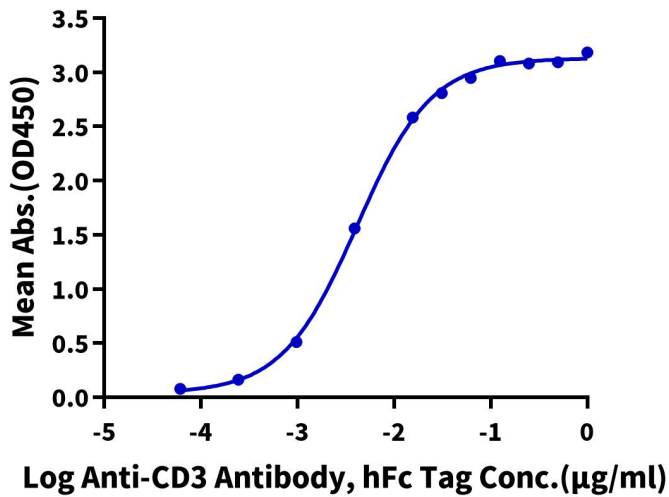


The purity of Cynomolgus CD3E&CD3G is greater than 95% as determined by SEC-HPLC.

**ELISA Data**

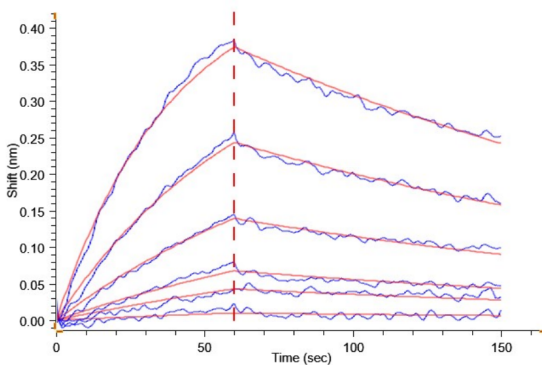
**Cynomolgus CD3E&CD3G, His Tag ELISA**

0.1µg Cynomolgus CD3E&CD3G, His Tag Per Well



Immobilized Cynomolgus CD3E&CD3G, His Tag at 1µg/ml (100µl/well) on the plate. Dose response curve for Anti-CD3 Antibody, hFc Tag with the EC50 of 4.1ng/ml determined by ELISA.

**BLI Data**



Loaded Anti-CD3 Antibody, hFc Tag on ProA-Biosensor can bind Cynomolgus CD3E&CD3G, His Tag with an affinity constant of 23.10 nM as determined in BLI assay .