

Cat. No. CD3-CM104-UL

Description

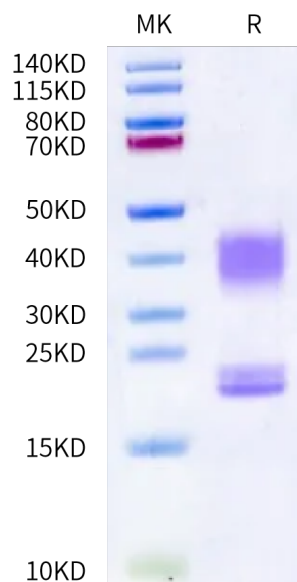
Source	Recombinant Cynomolgus CD3E&CD3D/CD3 epsilon&CD3 delta Protein is expressed from HEK293 with Flag tag at the C-Terminus of CD3E and His tag at the C-Terminus of CD3D. It contains Gln22-Asp117 (CD3E) and Phe22-Ala105 (CD3D).
Accession	Q95LI5(CD3E)&Q95LI8(CD3D)
Molecular Weight	The protein has a predicted MW of 16.17 kDa (CD3E) and 15.01 kDa (CD3D). Due to glycosylation, the protein migrates to 17-23 kDa and 35-45 kDa based on Bis-Tris PAGE result.
Endotoxin	Less than 0.01 EU per µg by the LAL method.
Purity	> 95% as determined by Bis-Tris PAGE > 95% as determined by HPLC

Formulation and Storage

Formulation	Lyophilized from 0.22 µm filtered solution in PBS (pH 7.4). Normally 8% trehalose is added as protectant before lyophilization.
Reconstitution	Dissolve the lyophilized protein in distilled water. Please refer to the Certificate of Analysis for detailed instructions.
Storage	-20 to -80°C for 12 months as supplied from date of receipt. -80°C for 3 months after reconstitution. Recommend to aliquot the protein into smaller quantities for optimal storage. Please minimize freeze-thaw cycles.

Background

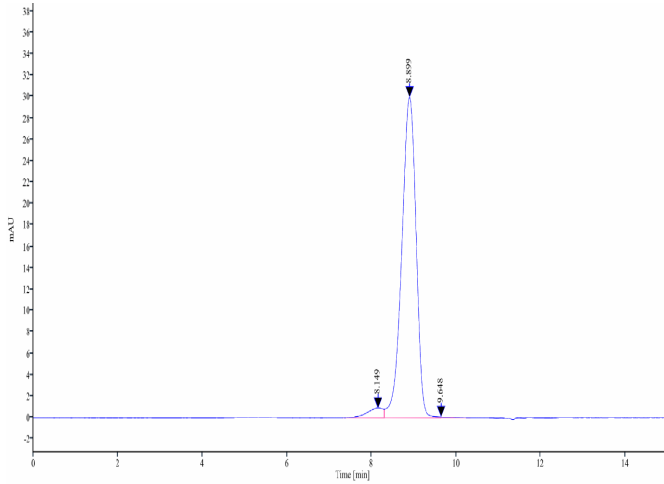
T-cell surface glycoprotein CD3 epsilon&CD3 delta chain, also known as CD3E&CD3D, are single-pass type I membrane proteins. When antigen presenting cells (APCs) activate T-cell receptor (TCR), TCR-mediated signals are transmitted across the cell membrane by the CD3 chains CD3D, CD3E, CD3G and CD3Z. All CD3 chains contain immunoreceptor tyrosine-based activation motifs (ITAMs) in their cytoplasmic domain.

Assay Data**Bis-Tris PAGE**

Cynomolgus CD3E&CD3D on Bis-Tris PAGE under reduced condition. The purity is greater than 95%.

SEC-HPLC

Assay Data

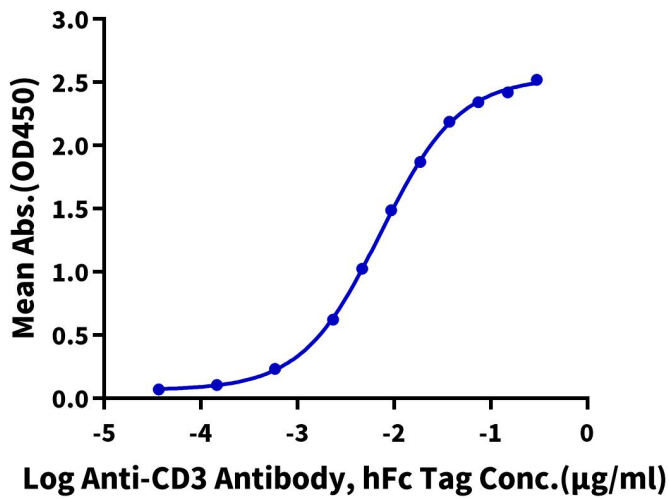


The purity of Cynomolgus CD3E&CD3D is greater than 95% as determined by SEC-HPLC.

ELISA Data

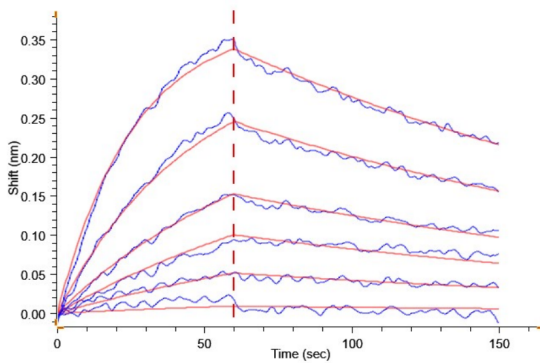
Cynomolgus CD3E&CD3D, His Tag ELISA

0.05µg Cynomolgus CD3E&CD3D, His Tag Per Well



Immobilized Cynomolgus CD3E&CD3D, His Tag at 0.5µg/ml (100µl/well) on the plate. Dose response curve for Anti-CD3 Antibody, hFc Tag with the EC50 of 7.2ng/ml determined by ELISA.

BLI Data



Loaded Anti-CD3 Antibody, hFc Tag on ProA-Biosensor can bind Cynomolgus CD3E&CD3D, His Tag with an affinity constant of 14.90 nM as determined in BLI assay .