

# Cynomolgus CD3E/CD3 epsilon 1-27 Protein

Cat. No. CD3-CM2ED



## Description

<b>Source</b>	Recombinant Cynomolgus CD3E/CD3 epsilon 1-27 Protein is expressed from HEK293 with hFc tag and Avi tag at the C-Terminus. It contains Asp22-Thr48.
<b>Accession</b>	Q95LI5.2
<b>Molecular Weight</b>	The protein has a predicted MW of 31.3 kDa. Due to glycosylation, the protein migrates to 40-50 kDa based on Bis-Tris PAGE result.
<b>Endotoxin</b>	Less than 1EU per µg by the LAL method.
<b>Purity</b>	> 95% as determined by Bis-Tris PAGE > 95% as determined by HPLC

## Formulation and Storage

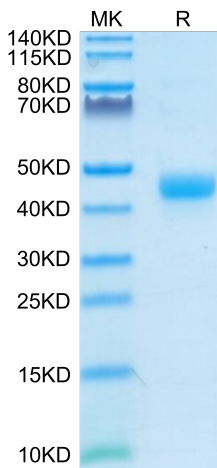
<b>Formulation</b>	Supplied as 0.22µm filtered solution in PBS (pH 7.4).
<b>Storage</b>	Valid for 12 months from date of receipt when stored at -80°C. Recommend to aliquot the protein into smaller quantities for optimal storage. Please minimize freeze-thaw cycles.

## Background

CD3E, is a single-pass type I membrane protein. CD3 (cluster of differentiation 3) T cell co-receptor helps to activate both the cytotoxic T cell (CD8 naive T cells) and also T helper cells (CD4 naive T cells). It consists of a protein complex and is composed of four distinct chains. In mammals, the complex contains a CD3γ chain, a CD3δ chain, and two CD3ε chains.

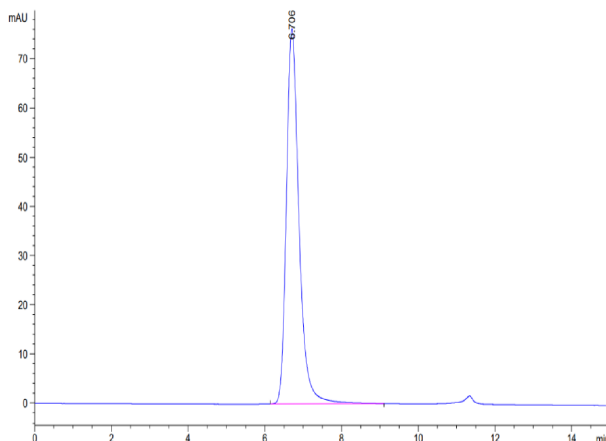
## Assay Data

### Bis-Tris PAGE



Cynomolgus CD3E 1-27 on Bis-Tris PAGE under reduced condition. The purity is greater than 95%.

### SEC-HPLC



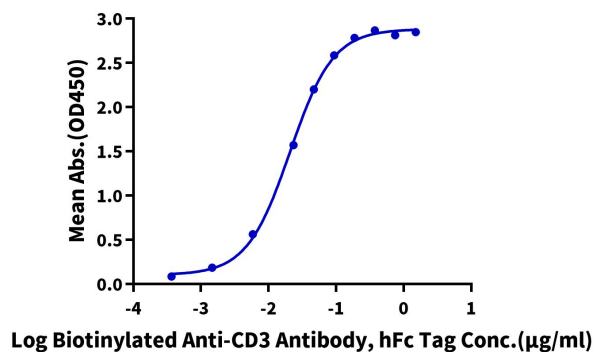
The purity of Cynomolgus CD3E 1-27 is greater than 95% as determined by SEC-HPLC.

Assay Data

ELISA Data

**Cynomolgus CD3E 1-27, hFc Tag ELISA**

0.2µg Cynomolgus CD3E 1-27, hFc Tag Per Well



Immobilized Cynomolgus CD3E 1-27, hFc Tag at 2µg/ml (100µl/Well) on the plate. Dose response curve for Biotinylated Anti-CD3 Antibody, hFc Tag with the EC50 of 20.7ng/ml determined by ELISA (QC Test).