

Human CD38 Protein, Ultra Low Endotoxin



Cat. No. CD3-HM138-UL

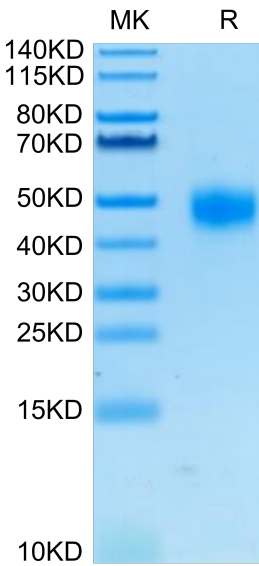
Description	
Source	Recombinant Human CD38 Protein is expressed from HEK293 with His tag at the C-Terminus. It contains Val43-Ile300.
Accession	P28907-1
Molecular Weight	The protein has a predicted MW of 30.7 kDa. Due to glycosylation, the protein migrates to 45-58 kDa based on Bis-Tris PAGE result.
Endotoxin	Less than 0.01 EU per µg by the LAL method.
Purity	> 95% as determined by Bis-Tris PAGE > 95% as determined by HPLC

Formulation and Storage	
Formulation	Lyophilized from 0.22µm filtered solution in PBS (pH 7.4). Normally 8% trehalose is added as protectant before lyophilization.
Reconstitution	Dissolve the lyophilized protein in distilled water. Please refer to the Certificate of Analysis for detailed instructions.
Storage	-20 to -80°C for 12 months as supplied from date of receipt. -80°C for 3 months after reconstitution. Recommend to aliquot the protein into smaller quantities for optimal storage. Please minimize freeze-thaw cycles.

Background	
CD38 (cluster of differentiation 38), also known as cyclic ADP ribose hydrolase, is a transmembrane glycoprotein found on the surface of some immune cells including plasma cells, activated or immature T and B cells, monocytes, and natural killer cells. CD38 participates in cell adhesion, signal transduction and calcium signaling.	

Assay Data

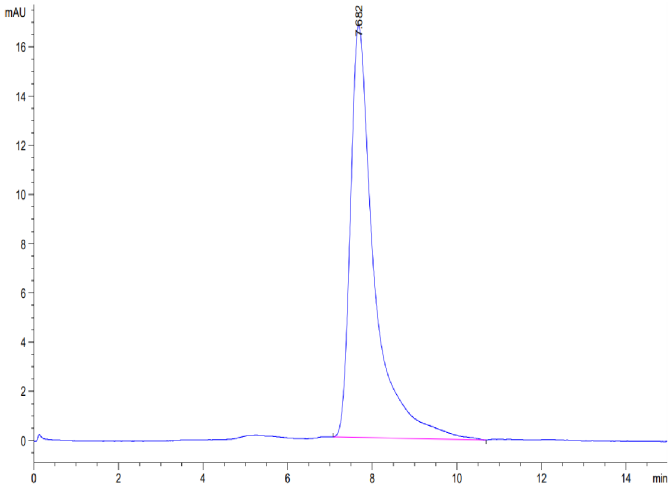
Bis-Tris PAGE



Human CD38 on Bis-Tris PAGE under reduced condition. The purity is greater than 95%.

SEC-HPLC

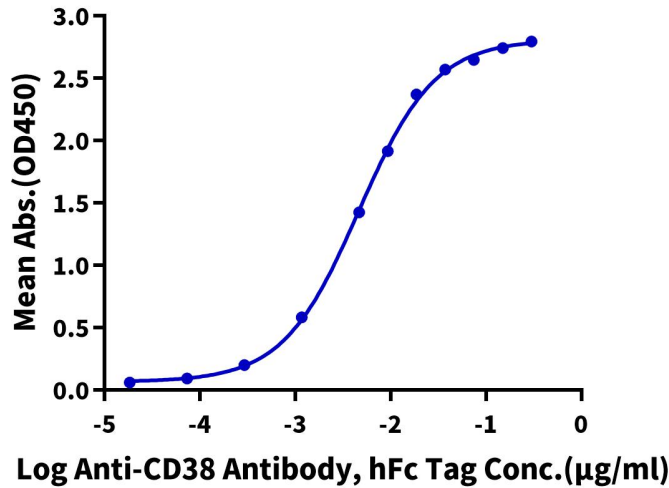
Assay Data



The purity of Human CD38 is greater than 95% as determined by SEC-HPLC.

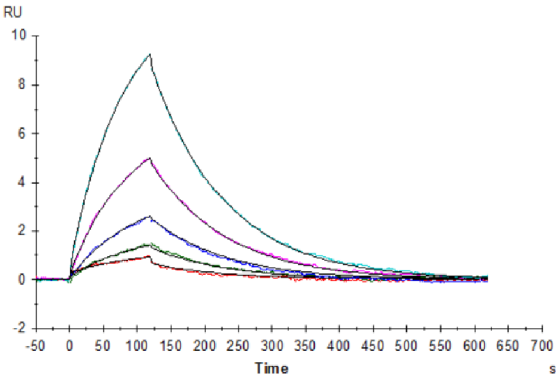
ELISA Data

Human CD38, His Tag ELISA
0.1μg Human CD38, His Tag Per Well



Immobilized Human CD38, His Tag at 1μg/ml (100μl/Well) on the plate. Dose response curve for Anti-CD38 Antibody, hFc Tag with the EC50 of 4.7ng/ml determined by ELISA (QC Test).

SPR Data



Anti-CD38 Antibody captured on Protein A chip, can bind Human CD38, His Tag with an affinity constant of 0.23μM as determined in a SPR assay (Biacore T200).