

Human CD38 Protein

Cat. No. CD3-HM138

Description

Source	Recombinant Human CD38 Protein is expressed from Expi293 with His tag at the C-terminal. It contains Val43-Ile300.
Accession	P28907-1
Molecular Weight	The protein has a predicted MW of 30.7 kDa. Due to glycosylation, the protein migrates to 45-58 kDa based on Tris-Bis PAGE result.
Endotoxin	Less than 1EU per μg by the LAL method.
Purity	> 95% as determined by Tris-Bis PAGE > 95% as determined by HPLC

Formulation and Storage

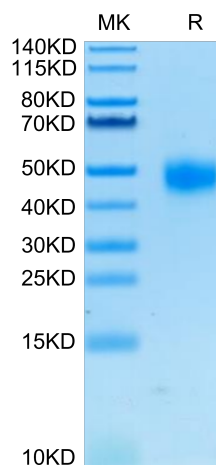
Formulation	Lyophilized from 0.22 μm filtered solution in PBS (pH 7.4). Normally 5% trehalose is added as protectant before lyophilization.
Reconstitution	Centrifuge tubes before opening. Reconstituting to a concentration more than 100 $\mu\text{g}/\text{ml}$ is recommended. Dissolve the lyophilized protein in distilled water.
Storage	-20 to -80°C for 12 months as supplied from date of receipt. -20 to -80°C for 3-6 months in unopened state after reconstitution. 2-8°C for 2-7 days after reconstitution. Recommend to aliquot the protein into smaller quantities for optimal storage. Please avoid freeze-thaw cycles.

Background

CD38 (cluster of differentiation 38), also known as cyclic ADP ribose hydrolase, is a transmembrane glycoprotein found on the surface of some immune cells including plasma cells, activated or immature T and B cells, monocytes, and natural killer cells. CD38 participates in cell adhesion, signal transduction and calcium signaling.

Assay Data

Tris-Bis PAGE



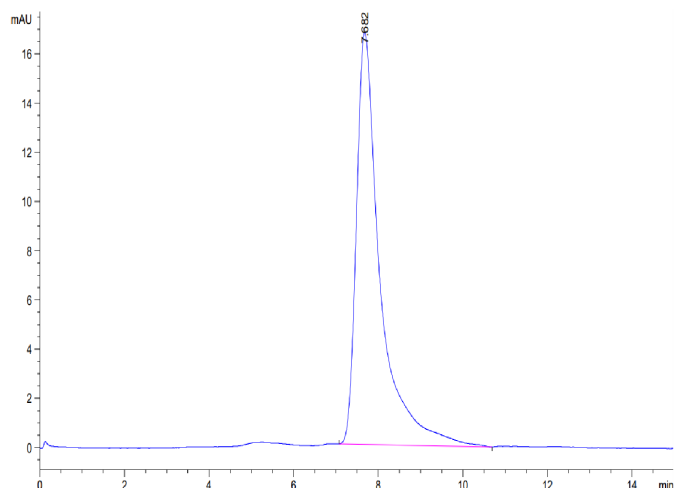
Human CD38 on Tris-Bis PAGE under reduced condition. The purity is greater than 95%.

SEC-HPLC

Human CD38 Protein

Cat. No. CD3-HM138

Assay Data

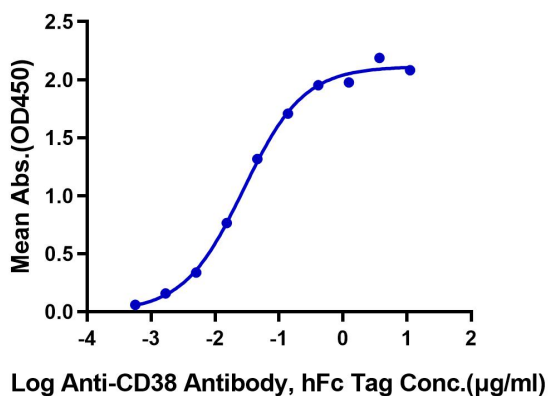


The purity of Human CD38 is greater than 95% as determined by SEC-HPLC.

ELISA Data

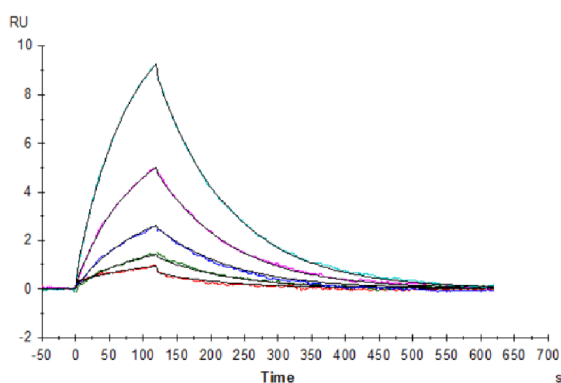
Human CD38, His Tag ELISA

0.1µg Human CD38, His Tag Per Well



Immobilized Human CD38, His Tag at 1µg/ml (100µl/Well) on the plate. Dose response curve for Anti-CD38 Antibody, hFc Tag with the EC50 of 28ng/ml determined by ELISA.

SPR Data



Anti-CD38 Antibody captured on Protein A chip, can bind Human CD38, His Tag with an affinity constant of 0.23µM as determined in a SPR assay (Biacore T200).