

# Human CD39/ENTPD1 Protein

Cat. No. CD3-HM139

## Description

<b>Source</b>	Recombinant Human CD39/ENTPD1 Protein is expressed from HEK293 with His tag at the C-terminus. It contains Thr38-Val478.
<b>Accession</b>	P49961-1
<b>Molecular Weight</b>	The protein has a predicted MW of 51.91 kDa. Due to glycosylation, the protein migrates to 65-75 kDa based on Bis-Tris PAGE result.
<b>Endotoxin</b>	Less than 1EU per $\mu\text{g}$ by the LAL method.
<b>Purity</b>	> 95% as determined by Bis-Tris PAGE > 95% as determined by HPLC

## Formulation and Storage

<b>Formulation</b>	Supplied as 0.22 $\mu\text{m}$ filtered solution in 20mM Tris, 150mM NaCL (pH 8.0).
<b>Storage</b>	Valid for 12 months from date of receipt when stored at $-80^{\circ}\text{C}$ . Recommend to aliquot the protein into smaller quantities for optimal storage. Please minimize freeze-thaw cycles.

## Background

CD39, also known as ENTPD1, belongs to the GDA1/CD39 NTPase family. It is expressed primarily on activated lymphoid cells and can also be detected in endothelial tissues. CD39 is involved in the processes of thromboregulation and vascular inflammation. The administration of soluble NTPDase-1 may have therapeutic applications for the treatment of some vascular and transplantation-associated diseases.

## Assay Data

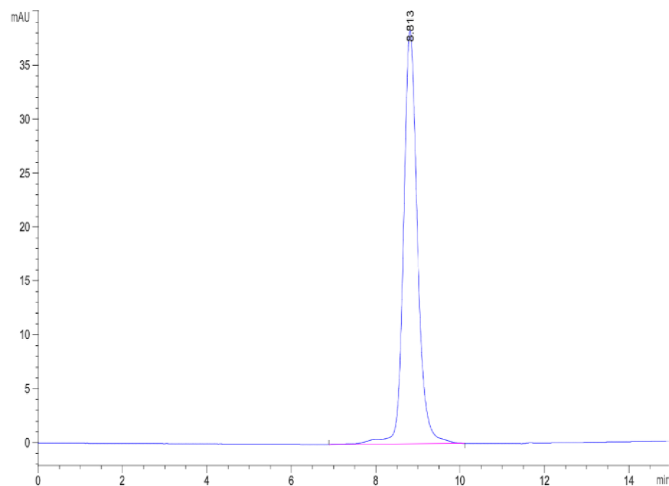
### Bis-Tris PAGE



Human CD39 on Bis-Tris PAGE under reduced condition. The purity is greater than 95%.

### SEC-HPLC

Assay Data

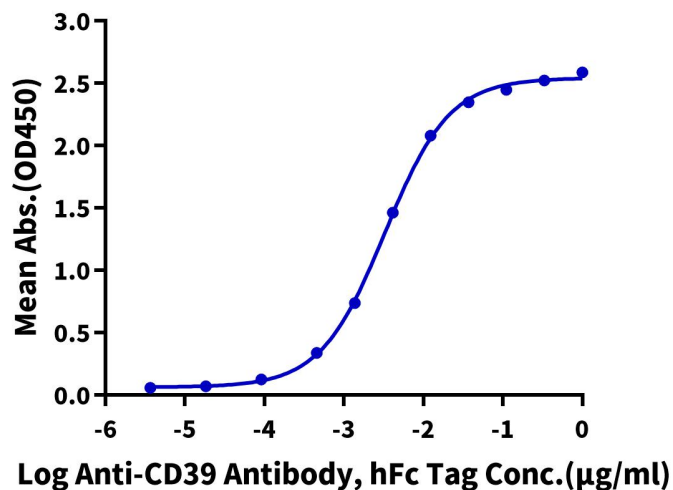


The purity of Human CD39 is greater than 95% as determined by SEC-HPLC.

ELISA Data

**Human CD39, His Tag ELISA**

0.2µg Human CD39, His Tag Per Well



Immobilized Human CD39, His Tag at 2µg/ml (100µl/well) on the plate. Dose response curve for Anti-CD39 Antibody, hFc Tag with the EC50 of 3.3ng/ml determined by ELISA.

Bioactivity Data

Measured by its ability to hydrolyze the 5'-phosphate groups from the substrate adenosine-5'-triphosphate (ATP). The specific activity is >9000 pmol/min/µg.