

Biotinylated Human CD3E&CD3G/CD3 epsilon&CD3 gamma Protein (Primary Amine Labeling)



Cat. No. CD3-HM157B

Description

Source	Recombinant Biotinylated Human CD3E&CD3G/CD3 epsilon&CD3 gamma Protein (Primary Amine Labeling) is expressed from HEK293 with His tag at the C-Terminus. It contains Asp23-Asp126 (CD3E) & Gln23-Ser116 (CD3G).
Accession	P07766(CD3E)&P09693(CD3G)
Molecular Weight	The protein has a predicted MW of 17.9 kDa (CD3E) and 17.9 kDa (CD3G). Due to glycosylation, the protein migrates to 25-40 kDa based on Bis-Tris PAGE result.
Endotoxin	Less than 1EU per µg by the LAL method.
Purity	> 95% as determined by Bis-Tris PAGE > 95% as determined by HPLC

Formulation and Storage

Formulation	Supplied as 0.22µm filtered solution in PBS (pH 7.4).
Storage	Valid for 12 months from date of receipt when stored at -80°C. Recommend to aliquot the protein into smaller quantities for optimal storage. Please minimize freeze-thaw cycles.

Background

T-cell surface glycoprotein CD3 epsilon & CD3 gamma chain, also known as CD3E & CD3G, are single-pass type I membrane proteins. When antigen presenting cells (APCs) activate T-cell receptor (TCR), TCR-mediated signals are transmitted across the cell membrane by the CD3 chains CD3D, CD3E, CD3G and CD3Z. All CD3 chains contain immunoreceptor tyrosine-based activation motifs (ITAMs) in their cytoplasmic domain.

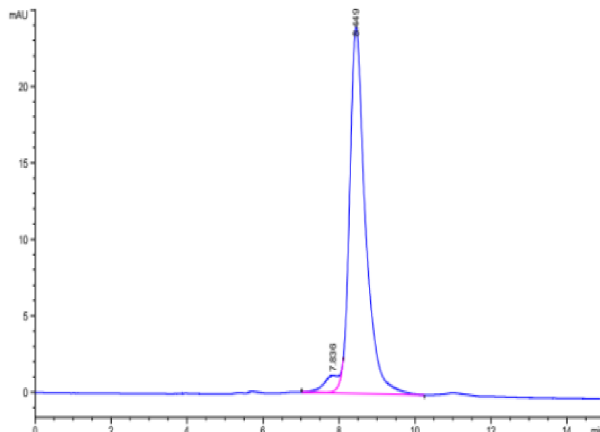
Assay Data

Bis-Tris PAGE



Biotinylated Human CD3E&CD3G on Bis-Tris PAGE under reduced condition. The purity is greater than 95%.

SEC-HPLC



The purity of Biotinylated Human CD3E&CD3G is greater than 95% as determined by SEC-HPLC.

Biotinylated Human CD3E&CD3G/CD3 epsilon&CD3 gamma Protein (Primary Amine Labeling)



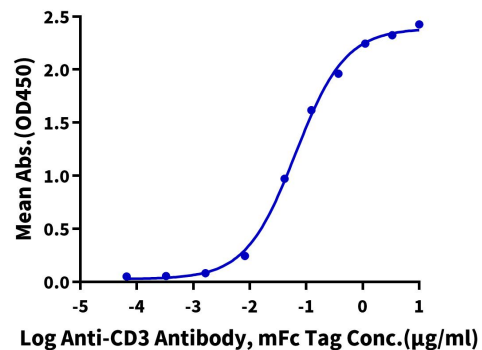
Cat. No. CD3-HM157B

Assay Data

ELISA Data

Biotinylated Human CD3E&CD3G, His Tag ELISA

0.2µg Biotinylated Human CD3E&CD3G, His Tag Per Well



Immobilized Biotinylated Human CD3E&CD3G, His Tag at 2µg/ml (100µl/well) on the streptavidin precoated plate (5µg/ml). Dose response curve for Anti-CD3 Antibody, mFc Tag with the EC50 of 64.5ng/ml determined by ELISA (QC Test).