

Cat. No. CD3-HM205-UL

| Description | |
|------------------|--|
| Source | Recombinant Human CD3E&CD3D/CD3 epsilon&CD3 delta Protein is expressed from HEK293 with hFc (IgG1) at the C-Terminus of CD3E and CD3D. It contains Asp23-Asp126(CD3E) and Phe22-Ala105(CD3D). |
| Accession | P07766(CD3E)&P04234(CD3D) |
| Molecular Weight | The protein has a predicted MW of 37.8 kDa (CD3E) and 35.4 kDa (CD3D). Due to glycosylation, the protein migrates to 48-58 kDa (CD3E) and 42-48 kDa (CD3D) based on Bis-Tris PAGE result. |
| Endotoxin | Less than 0.01 EU per µg by the LAL method. |
| Purity | > 95% as determined by Bis-Tris PAGE > 90% as determined by HPLC |

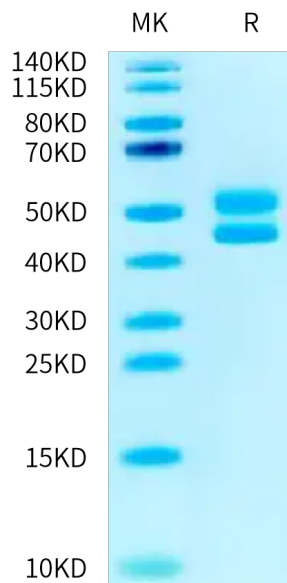
| Formulation and Storage | |
|-------------------------|---|
| Formulation | Lyophilized from 0.22µm filtered solution in PBS (pH 7.4). Normally 8% trehalose is added as protectant before lyophilization. |
| Reconstitution | Dissolve the lyophilized protein in distilled water. Please refer to the Certificate of Analysis for detailed instructions. |
| Storage | -20 to -80°C for 12 months as supplied from date of receipt. -80°C for 3 months after reconstitution. Recommend to aliquot the protein into smaller quantities for optimal storage. Please minimize freeze-thaw cycles. |

Background

T-cell surface glycoprotein CD3 epsilon & CD3 delta chain, also known as CD3E & CD3D, are single-pass type I membrane proteins. When antigen presenting cells (APCs) activate T-cell receptor (TCR), TCR-mediated signals are transmitted across the cell membrane by the CD3 chains CD3D, CD3E, CD3G and CD3Z. All CD3 chains contain immunoreceptor tyrosine-based activation motifs (ITAMs) in their cytoplasmic domain.

Assay Data

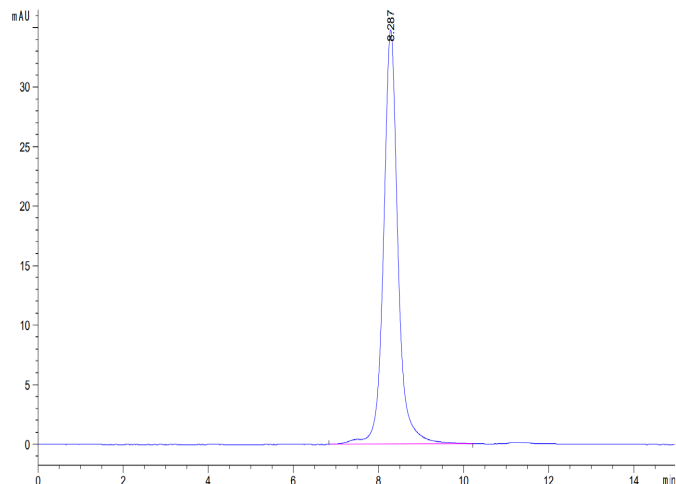
Bis-Tris PAGE



Human CD3E&CD3D on Bis-Tris PAGE under reduced condition. The purity is greater than 95%.

SEC-HPLC

Assay Data

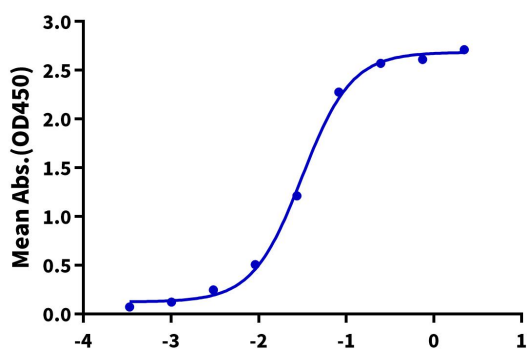


The purity of Human CD3E&CD3D was greater than 90% as determined by SEC-HPLC.

ELISA Data

Human CD3E&CD3D, hFc Tag ELISA

0.05µg Human CD3E&CD3D, hFc Tag Per Well



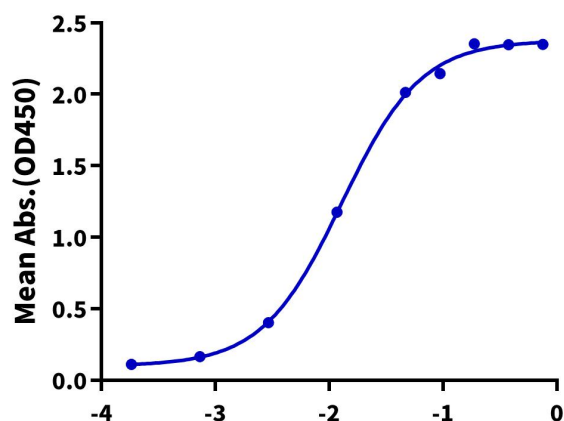
Immobilized Human CD3E&CD3D, hFc Tag at 0.5µg/ml (100µl/Well). Dose response curve for Biotinylated Anti-CD3E&CD3D Ab.1, hFc Tag with the EC50 of 31.3ng/ml determined by ELISA.

Log Biotinylated Anti-CD3E&CD3D Ab.1, hFc Tag Conc.(µg/ml)

ELISA Data

Human CD3E&CD3D, hFc Tag ELISA

0.2µg Human CD3E&CD3D, hFc Tag Per Well



Immobilized Human CD3E&CD3D, hFc Tag at 2µg/ml (100ul/Well). Dose response curve for Anti-CD3E&CD3D Ab.2, mFc Tag with the EC50 of 12.9ng/ml determined by ELISA (QC Test).

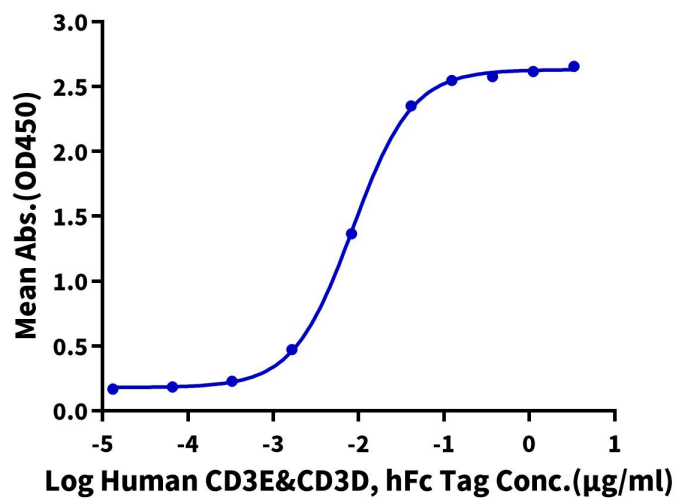
Log Anti-CD3E&CD3D Ab.2, mFc Tag Conc.(µg/ml)

ELISA Data

Assay Data

Human CD3E&CD3D, hFc Tag ELISA

0.1µg Tebentafusp, His Tag Per Well



Immobilized Tebentafusp, His Tag at 1 µg/ml (100µl/well) on the plate. Dose response curve for Human CD3E&CD3D, hFc Tag with the EC50 of 8.7ng/ml determined by ELISA.