

Biotinylated Human Siglec-3/CD33 Protein

Cat. No. CD3-HM433B

Description	
Source	Recombinant Biotinylated Human Siglec-3/CD33 Protein is expressed from HEK293 with His tag and Avi tag at the C-Terminus. It contains Asp18-His259.
Accession	P20138-1
Molecular Weight	The protein has a predicted MW of 29.6 kDa. Due to glycosylation, the protein migrates to 48-58 kDa based on Bis-Tris PAGE result.
Endotoxin	Less than 1EU per µg by the LAL method.
Purity	> 95% as determined by Bis-Tris PAGE > 95% as determined by HPLC

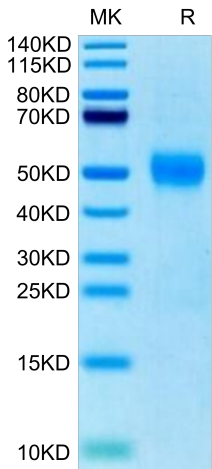
Formulation and Storage	
Formulation	Supplied as 0.22µm filtered solution in 50mM MES, 500mM NaCl, 200mM L-arginine (pH 7.4).
Storage	Valid for 12 months from date of receipt when stored at -80°C. Recommend to aliquot the protein into smaller quantities for optimal storage. Please minimize freeze-thaw cycles.

Background

Sialic-acid-binding immunoglobulin-like lectin (Siglec) that plays a role in mediating cell-cell interactions and in maintaining immune cells in a resting state. They are sialoadhesin/CD169/Siglec-1, CD22/Siglec-2, CD33/Siglec-3, Myelin-Associated Glycoprotein (MAG/Siglec-4a) and Siglecs 5 to 11. To date, no Siglec has been shown to recognized any cell surface ligand other than sialic acids, suggesting that interactions with glycans containing this carbohydrate are important in mediating the biological functions of Siglecs.

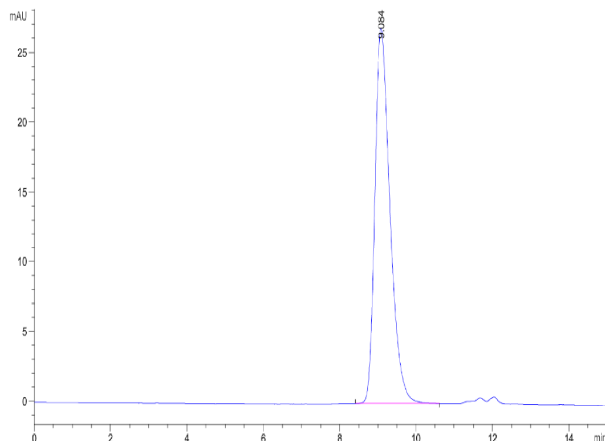
Assay Data

Bis-Tris PAGE



Biotinylated Human Siglec-3 on Bis-Tris PAGE under reduced condition. The purity is greater than 95%.

SEC-HPLC



The purity of Biotinylated Human Siglec-3 is greater than 95% as determined by SEC-HPLC.

Biotinylated Human Siglec-3/CD33 Protein

Cat. No. CD3-HM433B

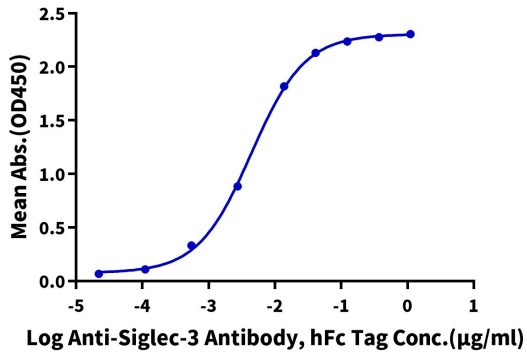


Assay Data

ELISA Data

Biotinylated Human Siglec-3, His Tag ELISA

0.05µg Biotinylated Human Siglec-3, His Tag Per Well



Immobilized Biotinylated Human Siglec-3, His Tag at 0.5µg/ml (100µl/Well) on streptavidin (5µg/ml) precoated plate. Dose response curve for Anti-Siglec-3 Antibody, hFc Tag with the EC50 of 4.4ng/ml determined by ELISA.