

Mouse CD3E&CD3G/CD3 epsilon&CD3 gamma Protein, Ultra Low Endotoxin



Cat. No. CD3-MM102-UL

Description

Source	Recombinant Mouse CD3E&CD3G/CD3 epsilon&CD3 gamma Protein is expressed as a heterodimer of CD3E and CD3G by co-expression in HEK293. Subunit CD3E is fused with a Flag tag at the C-terminus and subunit CD3G is fused with a His tag at the C-terminus. It contains Asp22-Asp108 (CD3E) and Gln23-Ser116 (CD3G).
Accession	P22646(CD3E)&P11942(CD3G)
Molecular Weight	The protein has a predicted MW of 15.34 kDa (CD3E) and 15.73 kDa (CD3G). Due to glycosylation, the protein migrates to 18-23 kDa and 25-27 kDa based on Bis-Tris PAGE result.
Endotoxin	Less than 0.01 EU per µg by the LAL method.
Purity	> 95% as determined by Bis-Tris PAGE > 95% as determined by HPLC

Formulation and Storage

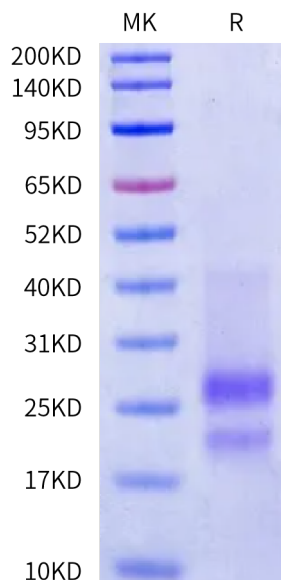
Formulation	Lyophilized from 0.22 µm filtered solution in PBS (pH 7.4). Normally 8% trehalose is added as protectant before lyophilization.
Reconstitution	Dissolve the lyophilized protein in distilled water. Please refer to the Certificate of Analysis for detailed instructions.
Storage	-20 to -80°C for 12 months as supplied from date of receipt. -80°C for 3 months after reconstitution. Recommend to aliquot the protein into smaller quantities for optimal storage. Please minimize freeze-thaw cycles.

Background

T-cell surface glycoprotein CD3 epsilon&CD3 gamma chain, also known as CD3E&CD3G, are single-pass type I membrane proteins. When antigen presenting cells (APCs) activate T-cell receptor (TCR), TCR-mediated signals are transmitted across the cell membrane by the CD3 chains CD3D, CD3E, CD3G and CD3Z. All CD3 chains contain immunoreceptor tyrosine-based activation motifs (ITAMs) in their cytoplasmic domain.

Assay Data

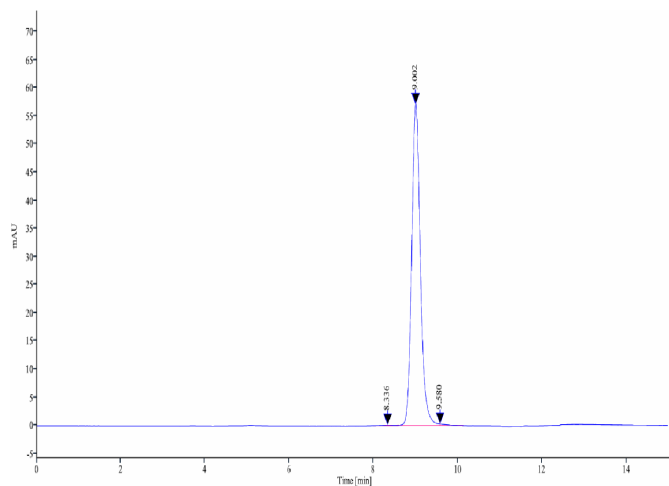
Bis-Tris PAGE



Mouse CD3E&CD3G on Bis-Tris PAGE under reduced condition. The purity is greater than 95%.

SEC-HPLC

Assay Data

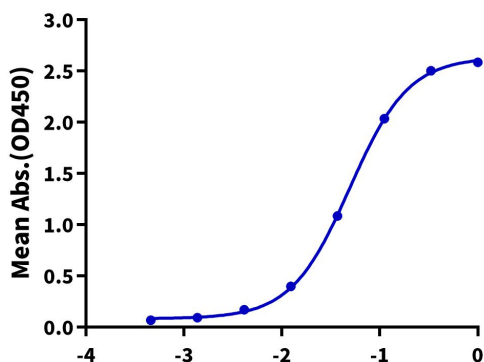


The purity of Mouse CD3E&CD3G is greater than 95% as determined by SEC-HPLC.

ELISA Data

Mouse CD3E&CD3G, His Tag ELISA

0.1µg Mouse CD3E&CD3G, His Tag Per Well



Immobilized Mouse CD3E&CD3G, His Tag at 1µg/ml(100µl/well) on the plate. Dose response curve for Anti-CD3E Antibody (145-2C11), mFc Tag with the EC50 of 49.4ng/ml determined by ELISA.

Log Anti-CD3E Antibody (145-2C11), mFc Tag Conc.(µg/ml)