

# Rat CD36/SR-B3 Protein

Cat. No. CD3-RM136

## Description

<b>Source</b>	Recombinant Rat CD36/SR-B3 Protein is expressed from HEK293 with His tag at the C-terminus. It contains Gly30-Lys439.
<b>Accession</b>	Q07969
<b>Molecular Weight</b>	The protein has a predicted MW of 47.46 kDa. Due to glycosylation, the protein migrates to 70-80 kDa based on Bis-Tris PAGE result.
<b>Endotoxin</b>	Less than 1EU per µg by the LAL method.
<b>Purity</b>	> 95% as determined by Bis-Tris PAGE > 95% as determined by HPLC

## Formulation and Storage

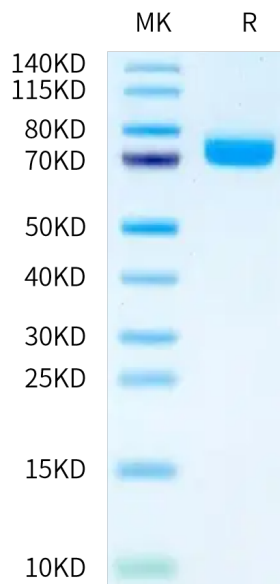
<b>Formulation</b>	Lyophilized from 0.22 µm filtered solution in PBS (pH 7.4). Normally 8% trehalose is added as protectant before lyophilization.
<b>Reconstitution</b>	Centrifuge the tube before opening. Reconstituting to a concentration more than 100 µg/ml is recommended. Dissolve the lyophilized protein in distilled water.
<b>Storage</b>	-20 to -80°C for 12 months as supplied from date of receipt. -80°C for 3 months after reconstitution. Recommend to aliquot the protein into smaller quantities for optimal storage. Please minimize freeze-thaw cycles.

## Background

CD36, alternatively known as platelet membrane glycoprotein IV (GPIV), GPIIb, thrombospondin receptor, collagen receptor, fatty acid translocase (FAT), and scavenger receptor class B, member 3 (SR-B3), is an integral membrane glycoprotein that has multiple physiological functions. CD36 is a multifunctional glycoprotein that acts as receptor for a broad range of ligands. Ligands can be of proteinaceous nature like thrombospondin, fibronectin, collagen or amyloid-beta as well as of lipidic nature such as oxidized low-density lipoprotein (oxLDL), anionic phospholipids, long-chain fatty acids and bacterial diacylated lipopeptides.

## Assay Data

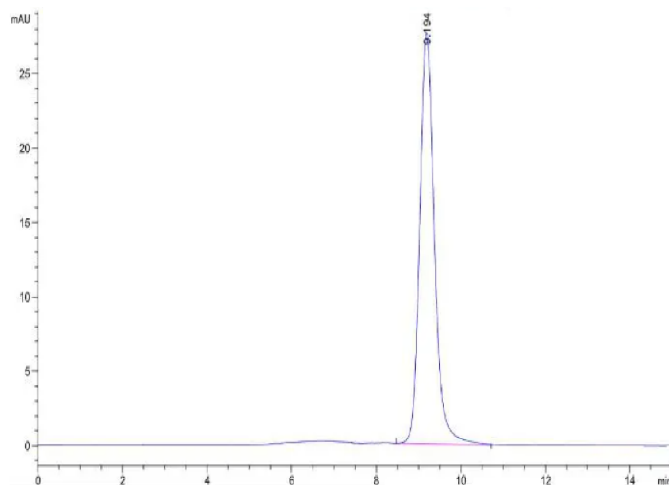
### Bis-Tris PAGE



Rat CD36 on Bis-Tris PAGE under reduced condition. The purity is greater than 95%.

### SEC-HPLC

Assay Data

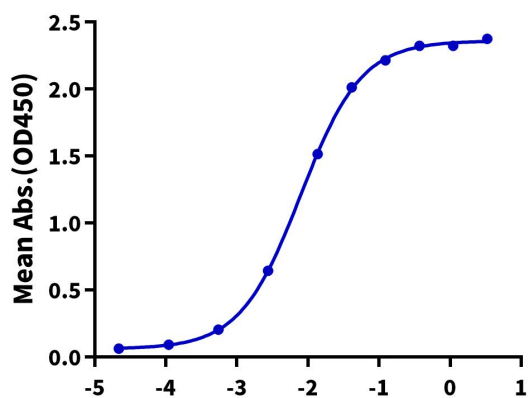


The purity of Rat CD36 is greater than 95% as determined by SEC-HPLC.

ELISA Data

**Rat CD36, His Tag ELISA**

0.05µg Rat CD36, His Tag Per Well



Immobilized Rat CD36, His Tag at 0.5µg/ml (100µl/well) on the plate. Dose response curve for Anti-CD36 Antibody, Rabbit IgG Tag with the EC50 of 7.9ng/ml determined by ELISA.