

Canine CD46 Protein

Cat. No. CD4-DM146

Description

Source	Recombinant Canine CD46 Protein is expressed from Expi293 with His tag at the C-terminal. It contains Cys45-Gly344.
Accession	A0A8C0YZN5
Molecular Weight	The protein has a predicted MW of 34.11 kDa. Due to glycosylation, the protein migrates to 50-70 kDa based on Tris-Bis PAGE result.
Endotoxin	Less than 1EU per µg by the LAL method.
Purity	> 95% as determined by Tris-Bis PAGE > 95% as determined by HPLC

Formulation and Storage

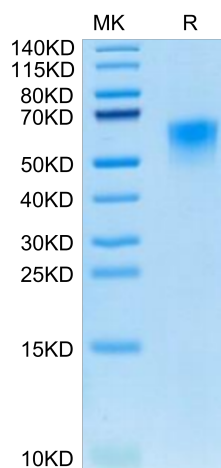
Formulation	Supplied as 0.22µm filtered solution in PBS (pH 7.4). Please dilute to the desired concentration according to the concentration of the solution shown on the product label.
Storage	Valid for 12 months from date of receipt when stored at -80°C. Recommend to aliquot the protein into smaller quantities for optimal storage. Please do not repeated freeze-thaw cycles.

Background

CD46 was discovered in 1986 during a search for novel C3b-binding proteins. CD46 is expressed ubiquitously and functions as a co-factor in the factor I-mediated proteolytic cleavage of C3b and C4b. Its vital role in preventing complement deposition on host tissue is underpinned by the fact that deficiency of CD46 is a predisposing factor for numerous disease conditions arising from complement-mediated 'self-attack'.

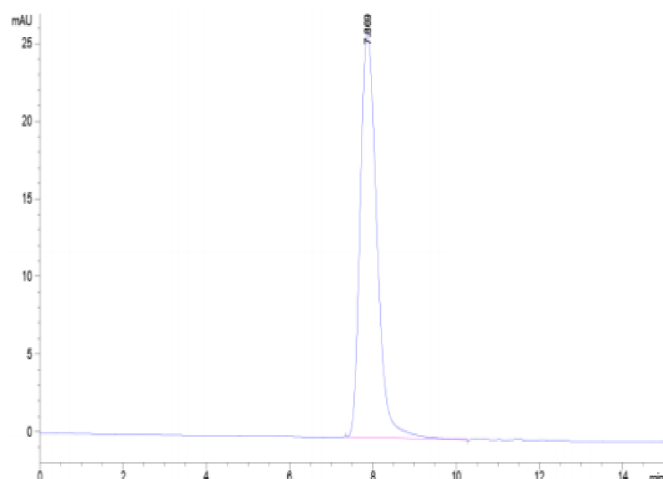
Assay Data

Tris-Bis PAGE



Canine CD46 on Tris-Bis PAGE under reduced condition. The purity is greater than 95%.

SEC-HPLC



The purity of Canine CD46 is greater than 95% as determined by SEC-HPLC.