

# Human IL-2 R alpha/CD25 Protein

Cat. No. CD5-HM425



## Description

<b>Source</b>	Recombinant Human IL-2 R alpha/CD25 Protein is expressed from HEK293 with His tag and Avi tag at the C-Terminus.
	It contains Glu22-Cys213.
<b>Accession</b>	P01589
<b>Molecular Weight</b>	The protein has a predicted MW of 24.6 kDa. Due to glycosylation, the protein migrates to 40-50 kDa based on Tris-Bis PAGE result.
<b>Endotoxin</b>	Less than 1EU per µg by the LAL method.
<b>Purity</b>	> 95% as determined by Tris-Bis PAGE
	> 95% as determined by HPLC

## Formulation and Storage

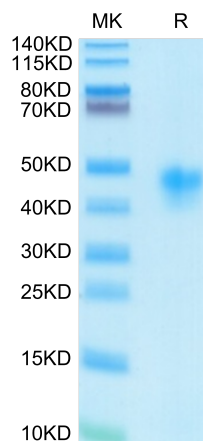
<b>Formulation</b>	Lyophilized from 0.22µm filtered solution in PBS (pH 7.4). Normally 8% trehalose is added as protectant before lyophilization.
<b>Reconstitution</b>	Centrifuge the tube before opening. Reconstituting to a concentration more than 100 µg/ml is recommended. Dissolve the lyophilized protein in distilled water.
<b>Storage</b>	-20 to -80°C for 24 months as supplied from date of receipt. -80°C for 3-6 months after reconstitution. 2-8°C for 2-7 days after reconstitution. Recommend to aliquot the protein into smaller quantities for optimal storage. Please minimize freeze-thaw cycles.

## Background

Human IL-2 receptor alpha (IL-2 R alpha), also known as Tac antigen and as CD25, was initially identified as a 55 kDa membrane glycoprotein that is capable of binding IL2.eceptor for interleukin-2. The receptor is involved in the regulation of immune tolerance by controlling regulatory T cells (TREGs) activity. TREGs suppress the activation and expansion of autoreactive T-cells.

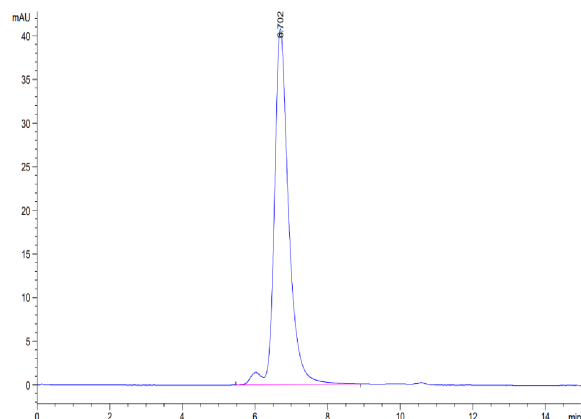
## Assay Data

### Tris-Bis PAGE



Human IL-2 R alpha on Tris-Bis PAGE under reduced condition. The purity is greater than 95%.

### SEC-HPLC



The purity of Human IL-2 R alpha is greater than 95% as determined by SEC-HPLC.

Human IL-2 R alpha/CD25 Protein

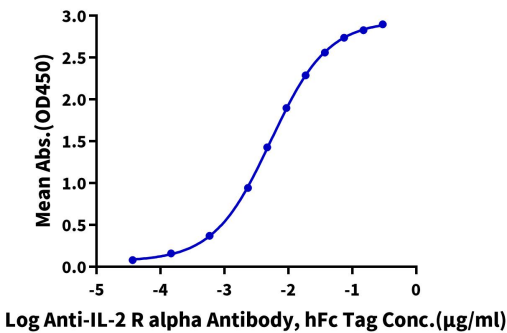
Cat. No. CD5-HM425



Assay Data

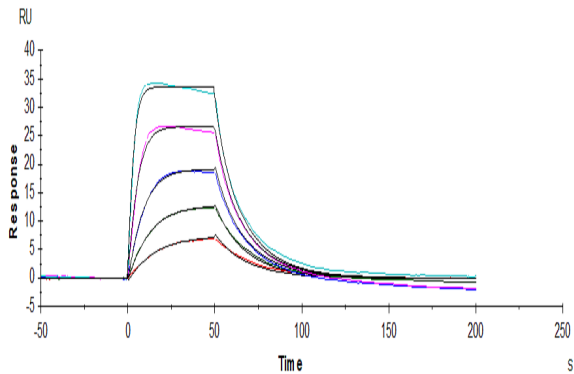
ELISA Data

Human IL-2 R alpha, His Tag ELISA  
0.05µg Human IL-2 R alpha, His Tag Per Well



Immobilized Human IL-2 R alpha, His Tag at 0.5µg/ml (100µl/well) on the plate. Dose response curve for Anti-IL-2 R alpha Antibody, hFc Tag with the EC50 of 5.3ng/ml determined by ELISA (QC Test).

SPR Data



Human IL-2 R alpha, His Tag captured on CM5 Chip via anti-His antibody can bind Human IL-2, No Tag with an affinity constant of 15.2nM as determined in SPR assay (Biacore T200).