

# Rhesus macaque CD5 Protein

Cat. No. CD5-RM405

## Description

<b>Source</b>	Recombinant Rhesus macaque CD5 Protein is expressed from HEK293 with His tag and Avi tag at the C-Terminus. It contains Arg25-Pro375.
<b>Accession</b>	F6V5Q9
<b>Molecular Weight</b>	The protein has a predicted MW of 41.7 kDa. Due to glycosylation, the protein migrates to 55-60 kDa based on Bis-Tris PAGE result.
<b>Endotoxin</b>	Less than 1EU per ug by the LAL method.
<b>Purity</b>	> 95% as determined by Bis-Tris PAGE > 95% as determined by HPLC

## Formulation and Storage

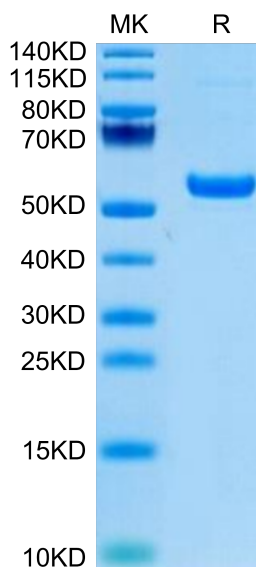
<b>Formulation</b>	Supplied as 0.22µm filtered solution in PBS (pH 7.4).
<b>Storage</b>	Valid for 12 months from date of receipt when stored at -80°C. Recommend to aliquot the protein into smaller quantities for optimal storage. Please minimize freeze-thaw cycles.

## Background

CD5: a type I transmembrane protein found on T cells, thymocytes, and some B cells that is a ligand for CD72 and is involved in cellular activation or adhesion; expressed in B-cell chronic lymphocytic leukemia and T-cell lymphoma.

## Assay Data

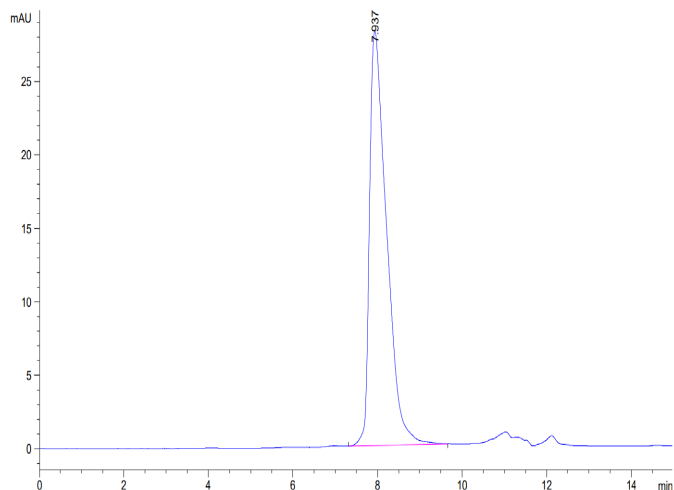
### Bis-Tris PAGE



Rhesus macaque CD5 on Bis-Tris PAGE under reduced condition. The purity is greater than 95%.

### SEC-HPLC

Assay Data

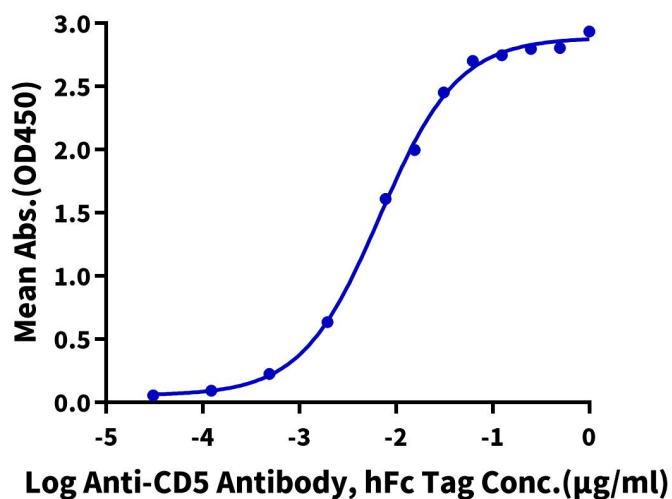


The purity of Rhesus macaque CD5 is greater than 95% as determined by SEC-HPLC.

ELISA Data

**Rhesus macaque CD5, His Tag ELISA**

0.1  $\mu$ g Rhesus macaque CD5, His Tag Per Well



Immobilized Rhesus macaque CD5, His Tag at 1  $\mu$ g/ml (100  $\mu$ l/well) on the plate. Dose response curve for Anti-CD5 Antibody, hFc Tag with the EC50 of 6.8ng/ml determined by ELISA.