

Cynomolgus CD6 Protein

Cat. No. CD6-CM101



Description

Source	Recombinant Cynomolgus CD6 Protein is expressed from HEK293 with His tag at the C-terminus. It contains His18-Glu398.
Accession	XP_005577746.1
Molecular Weight	The protein has a predicted MW of 41.84 kDa. Due to glycosylation, the protein migrates to 70-85 kDa based on Tris-Bis PAGE result.
Endotoxin	Less than 1EU per µg by the LAL method.
Purity	> 95% as determined by Tris-Bis PAGE > 95% as determined by HPLC

Formulation and Storage

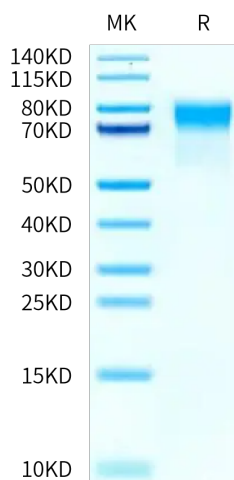
Formulation	Lyophilized from 0.22 µm filtered solution in PBS (pH 7.4). Normally 8% trehalose is added as protectant before lyophilization.
Reconstitution	Centrifuge the tube before opening. Reconstituting to a concentration more than 100 µg/ml is recommended. Dissolve the lyophilized protein in distilled water.
Storage	-20 to -80°C for 12 months as supplied from date of receipt. -20 to -80°C for 3-6 months in unopened state after reconstitution. 2-8°C for 2-7 days after reconstitution. Recommend to aliquot the protein into smaller quantities for optimal storage. Please minimize freeze-thaw cycles.

Background

The cell surface glycoprotein CD6 is expressed on leukocytes and mediates T cell trafficking across endothelial cell barriers. CD6 is a lymphocyte surface co-receptor physically associated with the T-cell receptor (TCR)/CD3 complex at the center of the immunological synapse.

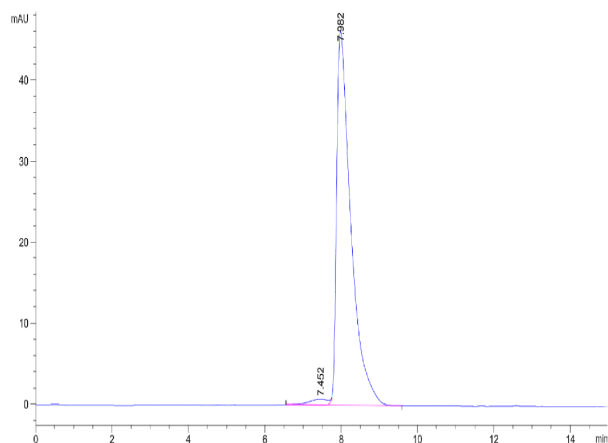
Assay Data

Tris-Bis PAGE



Cynomolgus CD6 on Tris-Bis PAGE under reduced condition. The purity is greater than 95%.

SEC-HPLC



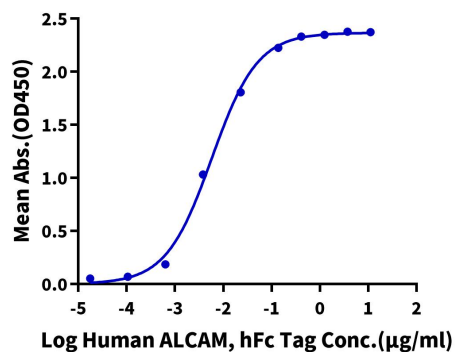
The purity of Cynomolgus CD6 is greater than 95% as determined by SEC-HPLC.

Assay Data

ELISA Data

Cynomolgus CD6, His Tag ELISA

0.1µg Cynomolgus CD6, His Tag Per Well



Immobilized Cynomolgus CD6, His Tag at 1µg/ml (100µl/well) on the plate. Dose response curve for Human ALCAM, hFc Tag with the EC50 of 5.8ng/ml determined by ELISA.