

# Human CD7 Protein, Ultra Low Endotoxin



Cat. No. CD7-HM101-UL

## Description

<b>Source</b>	Recombinant Human CD7 Protein, Ultra Low Endotoxin is expressed from HEK293 with His tag at the C-terminus. It contains Ala26-Pro180.
<b>Accession</b>	P09564
<b>Molecular Weight</b>	The protein has a predicted MW of 18.04 kDa. Due to glycosylation, the protein migrates to 38-42 kDa based on Bis-Tris PAGE result.
<b>Endotoxin</b>	Less than 0.01 EU per µg by the LAL method.
<b>Purity</b>	> 95% as determined by Bis-Tris PAGE > 95% as determined by HPLC

## Formulation and Storage

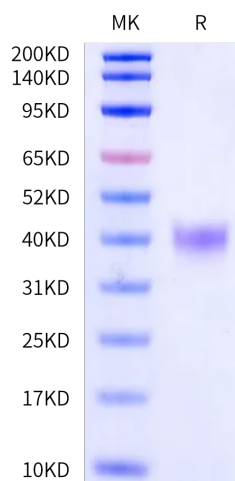
<b>Formulation</b>	Lyophilized from 0.22 µm filtered solution in PBS (pH 7.4). Normally 8% trehalose is added as protectant before lyophilization.
<b>Reconstitution</b>	Dissolve the lyophilized protein in distilled water. Please refer to the Certificate of Analysis for detailed instructions.
<b>Storage</b>	-20 to -80°C for 12 months as supplied from date of receipt. -80°C for 3 months after reconstitution. Recommend to aliquot the protein into smaller quantities for optimal storage. Please minimize freeze-thaw cycles.

## Background

CD7, also known as Leu-9, is an approximately 40 kDa glycosylated and palmitoylated transmembrane protein in the immunoglobulin superfamily. CD7 is expressed on T cells, NK cells, myeloid progenitor cells, and CD19 B progenitor cells. Among CD8 T cells, the CD7-bright population preferentially contains naïve and memory cells, while more weak expressors are primarily effector cells.

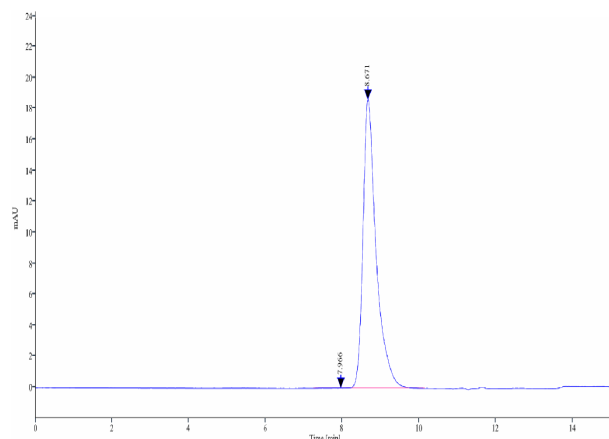
## Assay Data

### Bis-Tris PAGE



Human CD7 on Bis-Tris PAGE under reduced condition. The purity is greater than 95%.

### SEC-HPLC



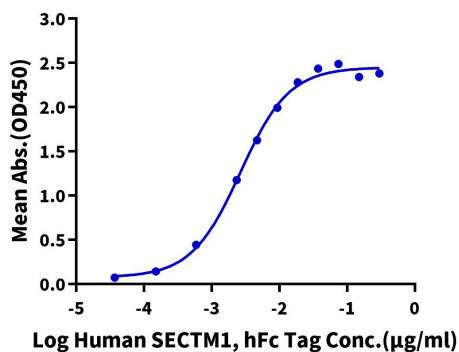
The purity of Human CD7 is greater than 95% as determined by SEC-HPLC.

Assay Data

ELISA Data

**Human CD7, His Tag ELISA**

0.1µg Human CD7, His Tag Per Well

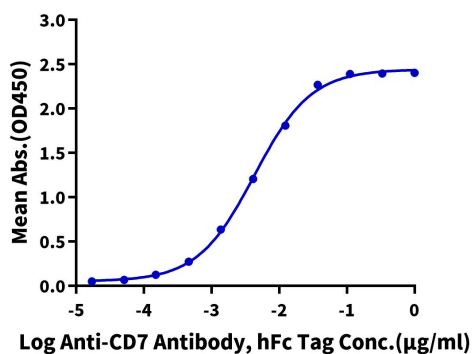


Immobilized Human CD7, His Tag at 1µg/ml (100µl/well) on the plate. Dose response curve for Human SECTM1, hFc Tag (Cat. SEC-HM201) with the EC50 of 2.7ng/ml determined by ELISA.

ELISA Data

**Human CD7, His Tag ELISA**

0.05µg Human CD7, His Tag Per Well



Immobilized Human CD7, His Tag at 0.5µg/ml (100µl/well) on the plate. Dose response curve for Anti-CD7 Antibody, hFc Tag with the EC50 of 4.3ng/ml determined by ELISA.