

# Mouse CD7 Protein

Cat. No. CD7-MM201

## Description

<b>Source</b>	Recombinant Mouse CD7 Protein is expressed from HEK293 with His tag at the C-Terminus. It contains Gln24-Pro150.
<b>Accession</b>	P50283
<b>Molecular Weight</b>	The protein has a predicted MW of 15.3 kDa. Due to glycosylation, the protein migrates to 25-28 kDa based on Bis-Tris PAGE result.
<b>Endotoxin</b>	Less than 1EU per $\mu\text{g}$ by the LAL method.
<b>Purity</b>	> 95% as determined by Bis-Tris PAGE

## Formulation and Storage

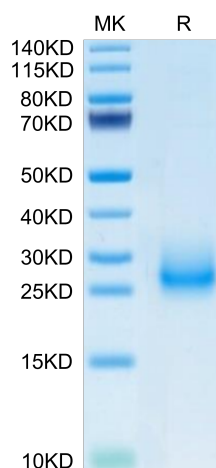
<b>Formulation</b>	Supplied as 0.22 $\mu\text{m}$ filtered solution in PBS (pH 7.4).
<b>Storage</b>	Valid for 12 months from date of receipt when stored at $-80^{\circ}\text{C}$ . Recommend to aliquot the protein into smaller quantities for optimal storage. Please minimize freeze-thaw cycles.

## Background

CD7, also known as Leu-9, is an approximately 40 kDa glycosylated and palmitoylated transmembrane protein in the immunoglobulin superfamily. CD7 is expressed on T cells, NK cells, myeloid progenitor cells, and CD19 B progenitor cells. Among CD8 T cells, the CD7-bright population preferentially contains naïve and memory cells, while more weak expressors are primarily effector cells.

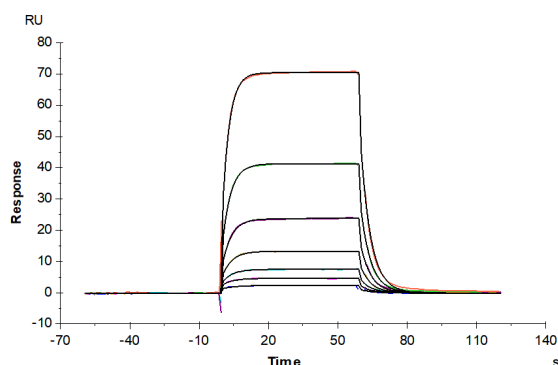
## Assay Data

### Bis-Tris PAGE



Mouse CD7 on Bis-Tris PAGE under reduced condition. The purity is greater than 95%.

### SPR Data



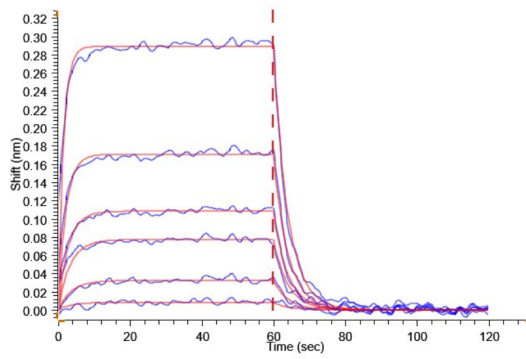
Human SECTM1, hFc Tag captured on CM5 Chip via Protein A can bind Mouse CD7, His Tag with an affinity constant of  $4.46 \mu\text{M}$  as determined in SPR assay (Biacore T200).

# Mouse CD7 Protein

Cat. No. CD7-MM201

## Assay Data

### BLI Data



Loaded Human SECTM1, hFc Tag on ProA-Biosensor can bind Mouse CD7, His Tag with an affinity constant of 4.60  $\mu\text{M}$  as determined in BLI assay (Gator).