

Cynomolgus CD8 alpha/CD8A Protein

Cat. No. CD8-CM18A

Description

Source	Recombinant Cynomolgus CD8 alpha/CD8A Protein is expressed from HEK293 with His tag at the C-terminus. It contains Ser22-Asp182.
Accession	XP_065382910.1
Molecular Weight	The protein has a predicted MW of 19.3 kDa. Due to glycosylation, the protein migrates to 28-35 kDa based on Bis-Tris PAGE result.
Endotoxin	Less than 0.1 EU per μg by the LAL method.
Purity	> 95% as determined by Bis-Tris PAGE

Formulation and Storage

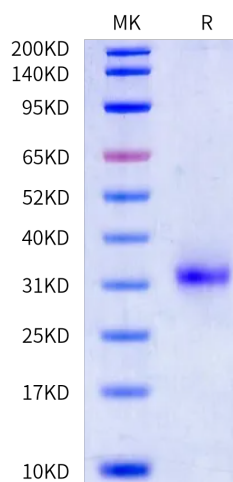
Formulation	Lyophilized from 0.22 μm filtered solution in PBS (pH 7.4). Normally 8% trehalose is added as protectant before lyophilization.
Reconstitution	Dissolve the lyophilized protein in distilled water. Please refer to the Certificate of Analysis for detailed instructions.
Storage	-20 to -80°C for 12 months as supplied from date of receipt. -80°C for 3 months after reconstitution. Recommend to aliquot the protein into smaller quantities for optimal storage. Please minimize freeze-thaw cycles.

Background

CD8 alpha enhances the responses of antigen-specific CTL activated through TCR through binding MHC class I, favoring lipid raft partitioning of TCR, and inducing intracellular signaling. CD8 alpha is also found on dendritic cells and rat macrophages, but whether CD8 alpha enhances responses of a partner receptor, like TCR, to activate these cells is not known.

Assay Data

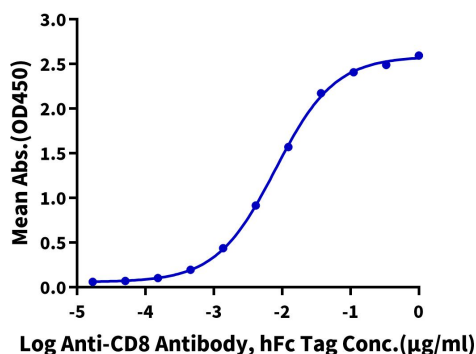
Bis-Tris PAGE



Cynomolgus CD8 alpha on Bis-Tris PAGE under reduced condition. The purity is greater than 95%.

ELISA Data

Cynomolgus CD8 alpha, His Tag ELISA
0.05 μg Cynomolgus CD8 alpha, His Tag Per Well



Immobilized Cynomolgus CD8 alpha, His Tag at 0.5 $\mu\text{g}/\text{ml}$ (100 μl /well) on the plate. Dose response curve for Anti-CD8 Antibody, hFc Tag with the EC50 of 8.0ng/ml determined by ELISA.