

# Human CD8 alpha/CD8A Protein

Cat. No. CD8-HM18A

Description	
Source	Recombinant Human CD8 alpha/CD8A Protein is expressed from HEK293 with His tag at the C-Terminus. It contains Ser22-Asp182.
Accession	P01732-1
Molecular Weight	The protein has a predicted MW of 18.70 kDa. Due to glycosylation, the protein migrates to 28-35 kDa based on Tris-Bis PAGE result.
Endotoxin	Less than 1EU per µg by the LAL method.
Purity	> 95% as determined by Tris-Bis PAGE

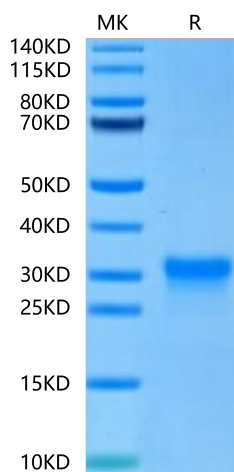
Formulation and Storage	
Formulation	Lyophilized from 0.22 µm filtered solution in PBS (pH 7.4). Normally 8% trehalose is added as protectant before lyophilization.
Reconstitution	Centrifuge the tube before opening. Reconstituting to a concentration more than 100 µg/ml is recommended. Dissolve the lyophilized protein in distilled water.
Storage	-20 to -80°C for 12 months as supplied from date of receipt. -20 to -80°C for 3-6 months in unopened state after reconstitution. 2-8°C for 2-7 days after reconstitution. Recommend to aliquot the protein into smaller quantities for optimal storage. Please minimize freeze-thaw cycles.

**Background**

CD8 alpha enhances the responses of antigen-specific CTL activated through TCR through binding MHC class I, favoring lipid raft partitioning of TCR, and inducing intracellular signaling. CD8 alpha is also found on dendritic cells and rat macrophages, but whether CD8 alpha enhances responses of a partner receptor, like TCR, to activate these cells is not known.

## Assay Data

### Tris-Bis PAGE

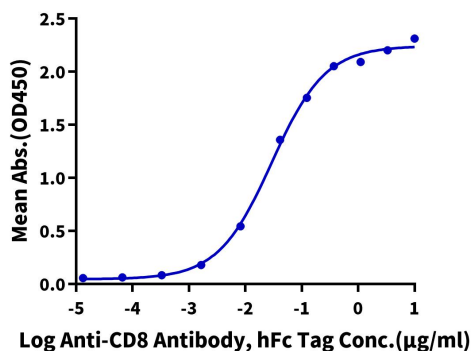


Human CD8 alpha on Tris-Bis PAGE under reduced condition. The purity is greater than 95%.

### ELISA Data

#### Human CD8 alpha, His Tag ELISA

0.1 µg Human CD8 alpha, His Tag Per Well



Immobilized Human CD8 alpha, His Tag at 1 µg/ml (100 µl/well) on the plate. Dose response curve for Anti-CD8 Antibody, hFc Tag with the EC50 of 29.4 ng/ml determined by ELISA.