

Human CD28H/IGPR-1 Protein

Cat. No. CD8-HM18H

Description

| | |
|-------------------------|--|
| Source | Recombinant Human CD28H/IGPR-1 Protein is expressed from Expi293 with His tag at the C-terminal. It contains Leu23-Gly150. |
| Accession | Q96BF3-1 |
| Molecular Weight | The protein has a predicted MW of 15.1 kDa. Due to glycosylation, the protein migrates to 42-52 kDa based on Tris-Bis PAGE result. |
| Endotoxin | Less than 1EU per ug by the LAL method. |
| Purity | > 95% as determined by Tris-Bis PAGE > 95% as determined by HPLC |

Formulation and Storage

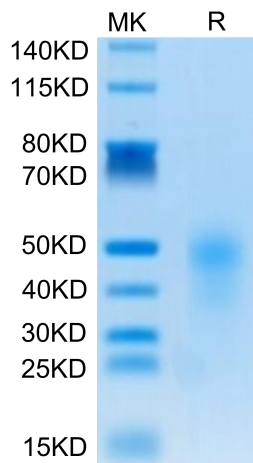
| | |
|-----------------------|--|
| Formulation | Lyophilized from 0.22µm filtered solution in PBS (pH 7.4). Normally 5% trehalose is added as protectant before lyophilization. |
| Reconstitution | Centrifuge tubes before opening. Reconstituting to a concentration more than 100 µg/ml is recommended (usually we use 1mg/ml solution for lyophilization). Dissolve the lyophilized protein in distilled water. |
| Storage | -20 to -80°C for 12 months as supplied from date of receipt. -20 to -80°C for 3-6 months in unopened state after reconstitution. 2-8°C for 2-7 days after reconstitution. Recommend to aliquot the protein into smaller quantities for optimal storage. Please avoid freeze-thaw cycles. |

Background

CD28H is constitutively expressed on all naive T cells. Repetitive antigenic exposure, however, induces a complete loss of CD28H on many T cells, and CD28H negative T cells have a phenotype of terminal differentiation and senescence. After extensive screening in a receptor array, a B7-like molecule, B7 homologue 5 (B7-H5), was identified as a specific ligand for CD28H.

Assay Data

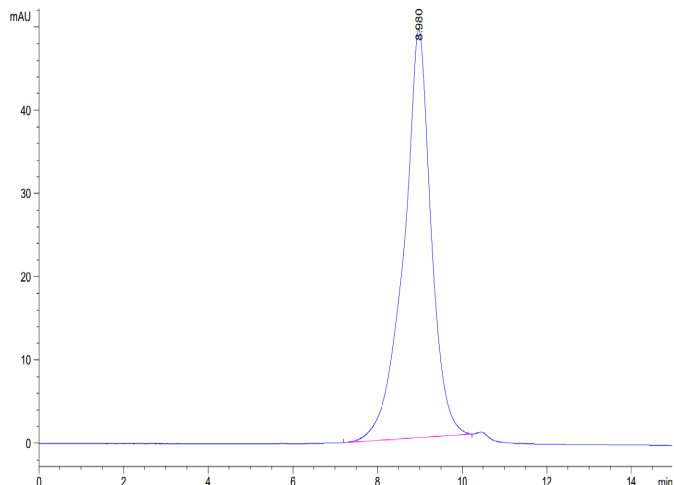
Tris-Bis PAGE



Human CD28H on Tris-Bis PAGE under reduced condition. The purity is greater than 95%.

SEC-HPLC

Assay Data

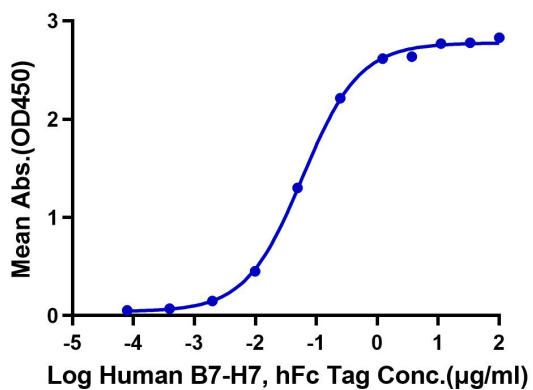


The purity of Human CD28H is greater than 95% as determined by SEC-HPLC.

ELISA Data

Human CD28H, His Tag ELISA

0.2µg Human CD28H, His Tag Per Well



Immobilized Human CD28H, His Tag at 2µg/ml (100µl/well) on the plate. Dose response curve for Human B7-H7, hFc Tag with the EC50 of 0.06µg/ml determined by ELISA.