

Human CD8 alpha&beta Heterodimer Protein

Cat. No. CD8-HM1AB

Description

Source	Recombinant Human CD8 alpha&beta Heterodimer Protein is expressed from HEK293 with His tag and Flag tag at the C-Terminus. It contains Ser22-Asp182(CD8 alpha) acidic tail and Leu22-Pro170(CD8 beta) basic tail.
Accession	P01732-1(CD8 alpha)&P10966-1(CD8 beta)
Molecular Weight	The protein has a predicted MW of 23.54 kDa (CD8 alpha) and 22.62 kDa (CD8 beta). Due to glycosylation, the protein migrates to 26-28 kDa (CD8 alpha) and 28-32 kDa (CD8 beta) based on Bis-Tris PAGE result.
Endotoxin	Less than 1EU per µg by the LAL method.
Purity	> 95% as determined by Bis-Tris PAGE > 95% as determined by HPLC

Formulation and Storage

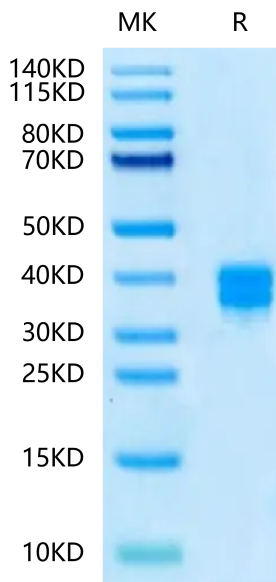
Formulation	Lyophilized from 0.22µm filtered solution in PBS (pH 7.4). Normally 8% trehalose is added as protectant before lyophilization.
Reconstitution	Centrifuge the tube before opening. Reconstituting to a concentration more than 100 µg/ml is recommended. Dissolve the lyophilized protein in distilled water.
Storage	-20 to -80°C for 12 months as supplied from date of receipt. -80°C for 3-6 months after reconstitution. 2-8°C for 2-7 days after reconstitution. Recommend to aliquot the protein into smaller quantities for optimal storage. Please minimize freeze-thaw cycles.

Background

CD8 alpha&beta (CD8αβ) is a heterodimeric form of CD8. CD8α is required for surface expression of CD8β. The extracellular IgV-like domain of CD8α interacts with the α3 portion of the class I MHC molecule. CD8αβ is expressed on human peripheral T cells and functions as a coreceptor and can greatly increase the sensitivity and breadth of antigen recognition by CD8+ peripheral T cells bearing TCR.

Assay Data

Bis-Tris PAGE



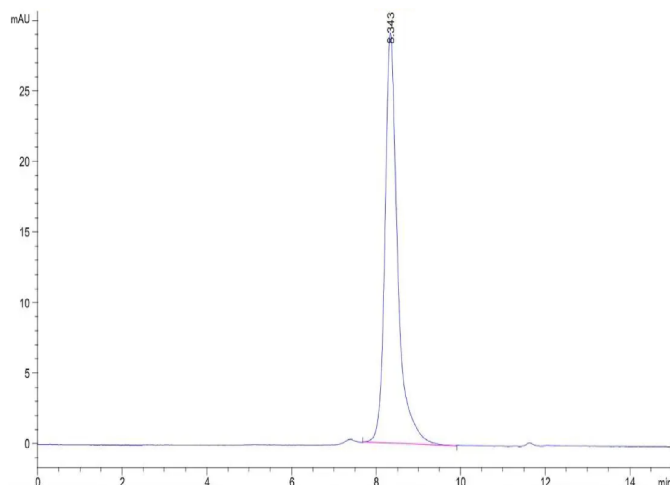
Human CD8 alpha&beta Heterodimer on Bis-Tris PAGE under reduced condition. The purity is greater than 95%.

SEC-HPLC

Human CD8 alpha&beta Heterodimer Protein

Cat. No. CD8-HM1AB

Assay Data

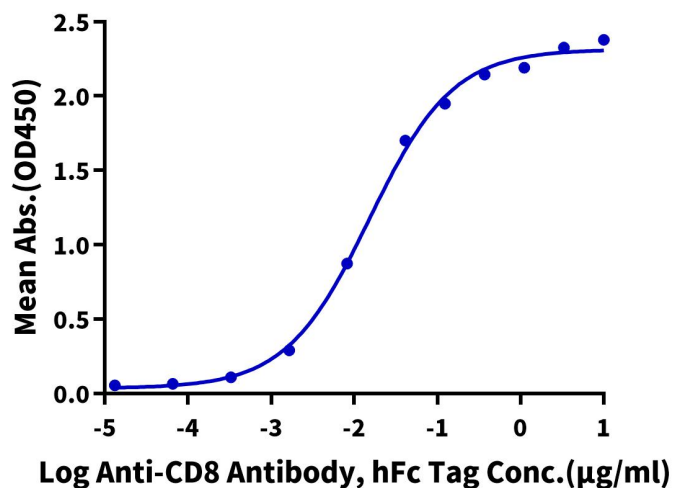


The purity of Human CD8 alpha&beta Heterodimer is greater than 95% as determined by SEC-HPLC.

ELISA Data

Human CD8A&CD8B, His Tag ELISA

0.05µg Human CD8A&CD8B, His Tag Per Well



Immobilized Human CD8A&CD8B, His Tag at 0.5µg/ml (100µl/well) on the plate. Dose response curve for Anti-CD8 Antibody, hFc Tag with the EC50 of 15.2ng/ml determined by ELISA.