

Human/Cynomolgus/Rhesus macaque CD28 Protein

Cat. No. CD8-HM228

Description

| | |
|-------------------------|--|
| Source | Recombinant Human/Cynomolgus/Rhesus macaque CD28 Protein is expressed from HEK293 with hFc tag at the N-Terminus. It contains Asn19-Pro152. |
| Accession | P10747-1 |
| Molecular Weight | The protein has a predicted MW of 42.6 kDa. Due to glycosylation, the protein migrates to 55-70 kDa based on Bis-Tris PAGE result. |
| Endotoxin | Less than 1EU per μg by the LAL method. |
| Purity | > 95% as determined by Bis-Tris PAGE > 95% as determined by HPLC |

Formulation and Storage

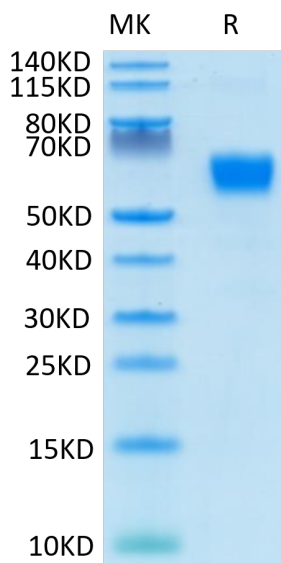
| | |
|-----------------------|---|
| Formulation | Lyophilized from 0.22 μm filtered solution in PBS (pH 7.4). Normally 8% trehalose is added as protectant before lyophilization. |
| Reconstitution | Centrifuge the tube before opening. Reconstituting to a concentration more than 100 $\mu\text{g}/\text{ml}$ is recommended. Dissolve the lyophilized protein in distilled water. |
| Storage | -20 to -80°C for 12 months as supplied from date of receipt. -80°C for 3 months after reconstitution. Recommend to aliquot the protein into smaller quantities for optimal storage. Please minimize freeze-thaw cycles. |

Background

CD28 is the receptor for CD80 (B7-1) and CD86 (B7-2) proteins. When activated by Toll-like receptor ligands, the CD80 expression is upregulated in antigen presenting cells (APCs). The CD86 expression on antigen presenting cells is constitutive. CD28 is the only B7 receptor constitutively expressed on naive T cells.

Assay Data

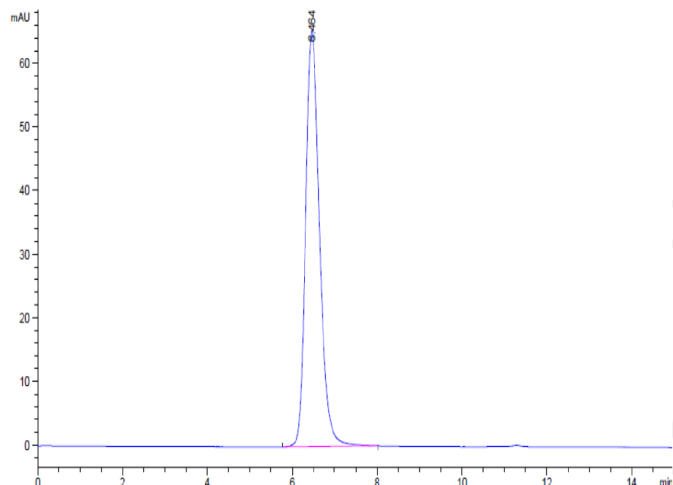
Bis-Tris PAGE



Human/Cynomolgus/Rhesus macaque CD28 on Bis-Tris PAGE under reduced condition. The purity is greater than 95%.

SEC-HPLC

Assay Data

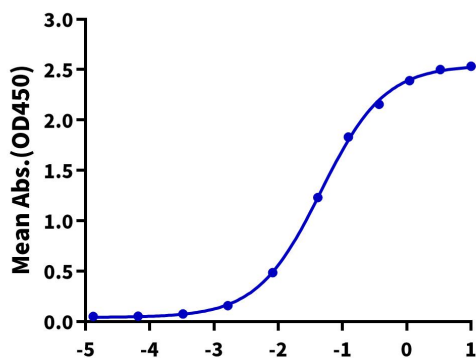


The purity of Human/Cynomolgus/Rhesus macaque CD28 was greater than 95% as determined by SEC-HPLC.

ELISA Data

Human/Cynomolgus/Rhesus macaque CD28, hFc Tag ELISA

0.05µg Human/Cynomolgus/Rhesus macaque CD28, hFc Tag Per Well



Immobilized Human/Cynomolgus/Rhesus macaque CD28, hFc Tag at 0.5µg/ml (100µl/Well) on the plate. Dose response curve for Biotinylated Anti-CD28 Antibody, hFc Tag with the EC50 of 46.3ng/ml determined by ELISA.