

# Human/Cynomolgus/Rhesus macaque CD28 Protein

Cat. No. CD8-HM328

## Description

<b>Source</b>	Recombinant Human/Cynomolgus/Rhesus macaque CD28 Protein is expressed from HEK293 with mFc (IgG2a) tag at the N-Terminus. It contains Asn19-Pro152.
<b>Accession</b>	P10747-1
<b>Molecular Weight</b>	The protein has a predicted MW of 41.9 kDa. Due to glycosylation, the protein migrates to 65-68 kDa based on Tris-Bis PAGE result.
<b>Endotoxin</b>	Less than 1EU per µg by the LAL method.
<b>Purity</b>	> 95% as determined by Tris-Bis PAGE

## Formulation and Storage

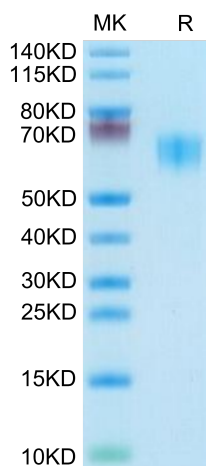
<b>Formulation</b>	Lyophilized from 0.22µm filtered solution in PBS (pH 7.4). Normally 8% trehalose is added as protectant before lyophilization.
<b>Reconstitution</b>	Centrifuge the tube before opening. Reconstituting to a concentration more than 100 µg/ml is recommended. Dissolve the lyophilized protein in distilled water.
<b>Storage</b>	-20 to -80°C for 12 months as supplied from date of receipt. -80°C for 3-6 months after reconstitution. 2-8°C for 2-7 days after reconstitution. Recommend to aliquot the protein into smaller quantities for optimal storage. Please minimize freeze-thaw cycles.

## Background

CD28 is the receptor for CD80 (B7-1) and CD86 (B7-2) proteins. When activated by Toll-like receptor ligands, the CD80 expression is upregulated in antigen presenting cells (APCs). The CD86 expression on antigen presenting cells is constitutive. CD28 is the only B7 receptor constitutively expressed on naive T cells.

## Assay Data

### Tris-Bis PAGE

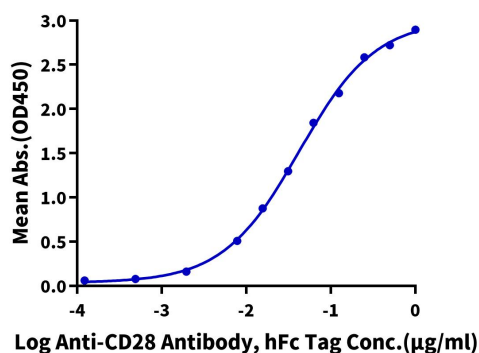


Human/Cynomolgus/Rhesus macaque CD28 on Tris-Bis PAGE under reduced condition. The purity is greater than 95%.

### ELISA Data

#### Human/Cynomolgus/Rhesus macaque CD28, mFc Tag ELISA

0.1µg Human/Cynomolgus/Rhesus macaque CD28, mFc Tag Per Well



Immobilized Human/Cynomolgus/Rhesus macaque CD28, mFc (IgG2a) Tag at 1µg/ml (100µl/Well) on the plate. Dose response curve for Anti-CD28 Antibody, hFc Tag with the EC50 42.2ng/ml determined by ELISA.