

# Human Fc gamma RIIB/C (CD32b/c) Protein

Cat. No. CDB-HM401

## Description

<b>Source</b>	Recombinant Human Fc gamma RIIB/C (CD32b/c) Protein is expressed from HEK293 with His tag and Avi tag at the C-Terminus. It contains Ala46-Pro217.
<b>Accession</b>	P31994-1
<b>Molecular Weight</b>	The protein has a predicted MW of 22.5 kDa. Due to glycosylation, the protein migrates to 32-37 kDa based on Bis-Tris PAGE result.
<b>Endotoxin</b>	Less than 1EU per µg by the LAL method.
<b>Purity</b>	> 95% as determined by Bis-Tris PAGE > 95% as determined by HPLC

## Formulation and Storage

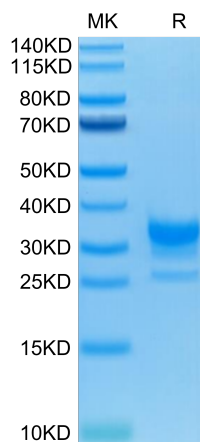
<b>Formulation</b>	Lyophilized from 0.22µm filtered solution in PBS (pH 7.4). Normally 8% trehalose is added as protectant before lyophilization.
<b>Reconstitution</b>	Centrifuge the tube before opening. Reconstituting to a concentration more than 100 µg/ml is recommended. Dissolve the lyophilized protein in distilled water.
<b>Storage</b>	-20 to -80°C for 12 months as supplied from date of receipt. -80°C for 3 months after reconstitution. Recommend to aliquot the protein into smaller quantities for optimal storage. Please minimize freeze-thaw cycles.

## Background

The Fc gamma Rs have been divided into three classes based on close relationships in their extracellular domains; these groups are designated Fc gamma RI (also known as CD64), Fc gamma RII (CD32), and Fc gamma RIIB (CD16). Each group may be encoded by multiple genes and exist in different isoforms depending on species and cell type.

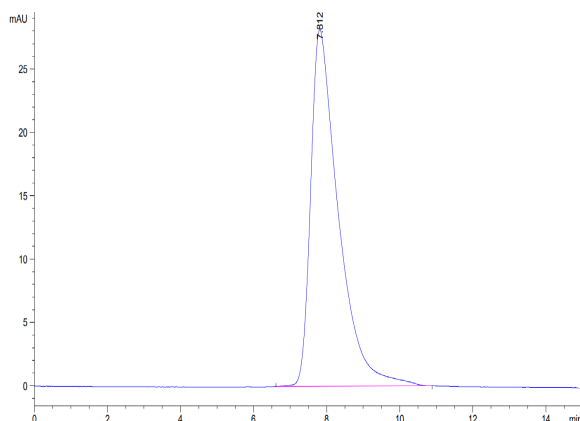
## Assay Data

### Bis-Tris PAGE



Human Fc gamma RIIB/C on Bis-Tris PAGE under reduced condition. The purity is greater than 95%.

### SEC-HPLC



The purity of Human Fc gamma RIIB/C is greater than 95% as determined by SEC-HPLC.

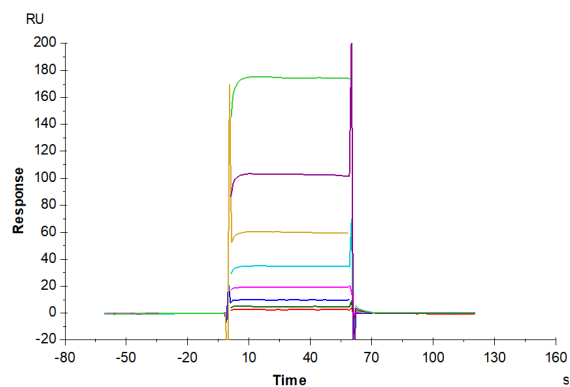
# Human Fc gamma RIIB/C (CD32b/c) Protein

Cat. No. CDB-HM401



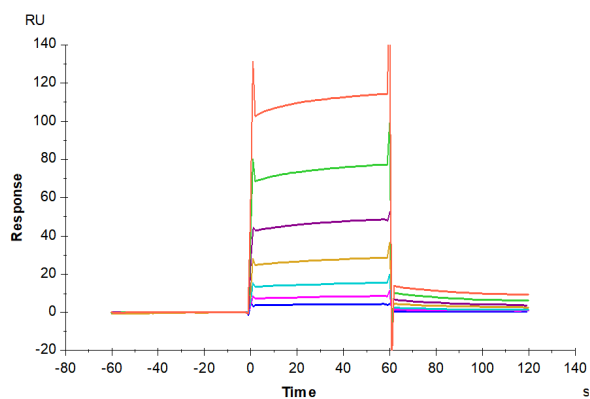
## Assay Data

### SPR Data



Human Fc gamma RIIB/C, His-Avi Tag captured on CM5 Chip via Anti-his antibody can bind Rituximab with an affinity constant of 16.72  $\mu\text{M}$  as determined in SPR assay (Biacore T200) (QC Test).

### SPR Data



Rituximab captured on CM5 Chip via Protein A can bind Human Fc gamma RIIB/C, His Tag with an affinity constant of 3.46  $\mu\text{M}$  as determined in SPR assay (Biacore T200).