

# Rhesus macaque CDCP1 Protein, Ultra Low Endotoxin

Cat. No. CDC-CM101-UL

## Description

<b>Source</b>	Recombinant Rhesus macaque CDCP1 Protein is expressed from HEK293 with His tag at the C-Terminus. It contains Phe30-Thr667.
<b>Accession</b>	XP_001114659.2
<b>Molecular Weight</b>	The protein has a predicted MW of 73.2 kDa. Due to glycosylation, the protein migrates to 80-115 kDa based on Bis-Tris PAGE result.
<b>Endotoxin</b>	Less than 0.01 EU per µg by the LAL method.
<b>Purity</b>	> 95% as determined by Bis-Tris PAGE > 95% as determined by HPLC

## Formulation and Storage

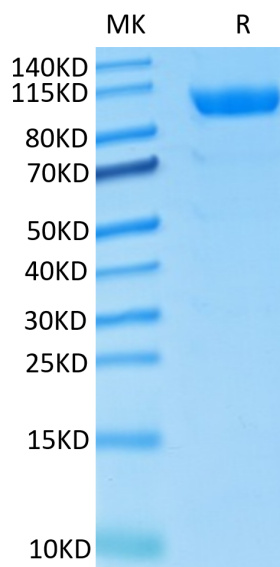
<b>Formulation</b>	Lyophilized from 0.22µm filtered solution in PBS (pH 7.4). Normally 8% trehalose is added as protectant before lyophilization.
<b>Reconstitution</b>	Dissolve the lyophilized protein in distilled water. Please refer to the Certificate of Analysis for detailed instructions.
<b>Storage</b>	-20 to -80°C for 12 months as supplied from date of receipt. -80°C for 3 months after reconstitution. Recommend to aliquot the protein into smaller quantities for optimal storage. Please minimize freeze-thaw cycles.

## Background

Tumor metastasis depends on the dynamic regulation of cell adhesion through  $\beta$ 1-integrin. The Cub-Domain Containing Protein-1, CDCP1, is a transmembrane glycoprotein which regulates cell adhesion. Overexpression and loss of CDCP1 have been observed in the same cancer types to promote metastatic progression.

## Assay Data

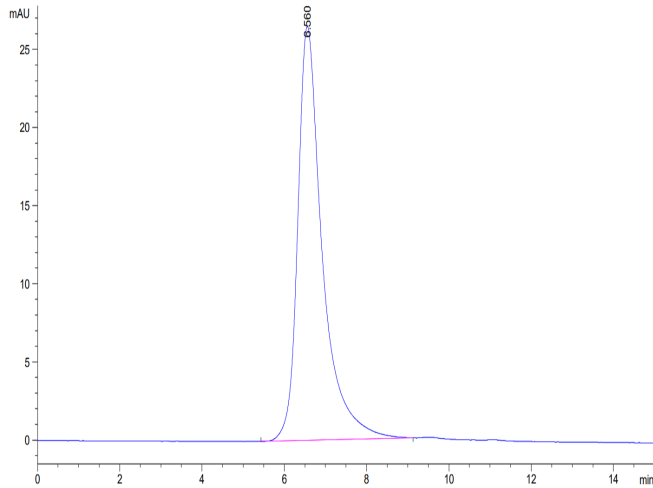
### Bis-Tris PAGE



Rhesus macaque CDCP1 on Bis-Tris PAGE under reduced condition. The purity is greater than 95%..

### SEC-HPLC

Assay Data

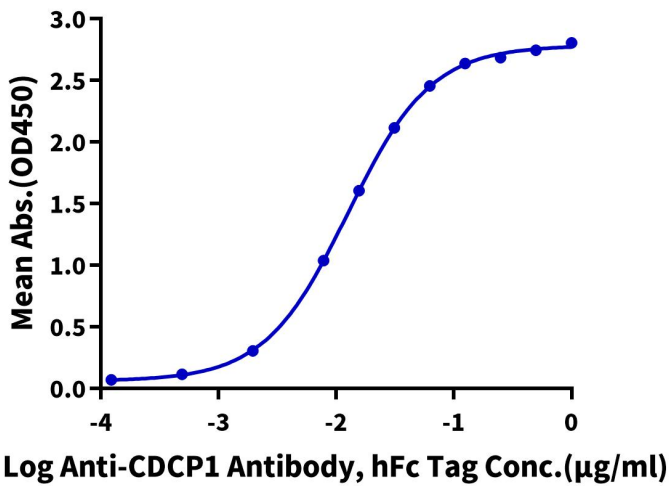


The purity of Rhesus macaque CDCP1 is greater than 95% as determined by SEC-HPLC.

ELISA Data

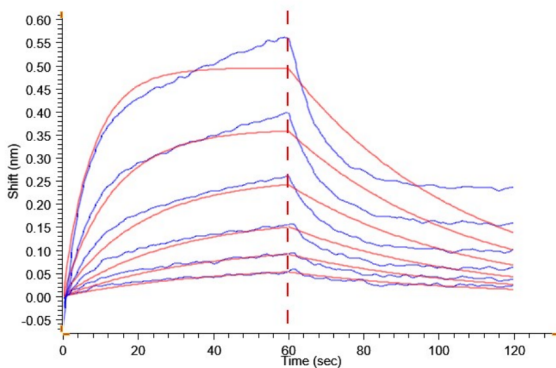
**Rhesus macaque CDCP1, His Tag ELISA**

0.5µg Rhesus macaque CDCP1, His Tag Per Well



Immobilized Rhesus macaque CDCP1 at 5µg/ml (100µl/Well) on the plate. Dose response curve for Anti-CDCP1 Antibody, hFc Tag with the EC50 of 12.6ng/ml determined by ELISA (QC Test).

BLI Data



Loaded Anti-CDCP1 Antibody, hFc-Avi Tag on ProA-Biosensor can bind Rhesus macaque CDCP1, His Tag with an affinity constant of 80.70 nM as determined in BLI assay .