

Rhesus macaque CDCP1 Protein

Cat. No. CDC-CM101



Description

Source	Recombinant Rhesus macaque CDCP1 Protein is expressed from HEK293 with His tag at the C-Terminus. It contains Ala29-Thr667.
Accession	XP_001114659.2
Molecular Weight	The protein has a predicted MW of 73.2 kDa. Due to glycosylation, the protein migrates to 80-115 kDa based on Bis-Tris PAGE result.
Endotoxin	Less than 1EU per µg by the LAL method.
Purity	> 95% as determined by Bis-Tris PAGE > 95% as determined by HPLC

Formulation and Storage

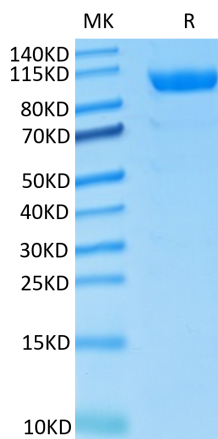
Formulation	Lyophilized from 0.22µm filtered solution in PBS (pH 7.4). Normally 8% trehalose is added as protectant before lyophilization.
Reconstitution	Centrifuge the tube before opening. Reconstituting to a concentration more than 100 µg/ml is recommended. Dissolve the lyophilized protein in distilled water.
Storage	-20 to -80°C for 12 months as supplied from date of receipt. -80°C for 3 months after reconstitution. Recommend to aliquot the protein into smaller quantities for optimal storage. Please minimize freeze-thaw cycles.

Background

Tumor metastasis depends on the dynamic regulation of cell adhesion through β 1-integrin. The Cub-Domain Containing Protein-1, CDCP1, is a transmembrane glycoprotein which regulates cell adhesion. Overexpression and loss of CDCP1 have been observed in the same cancer types to promote metastatic progression.

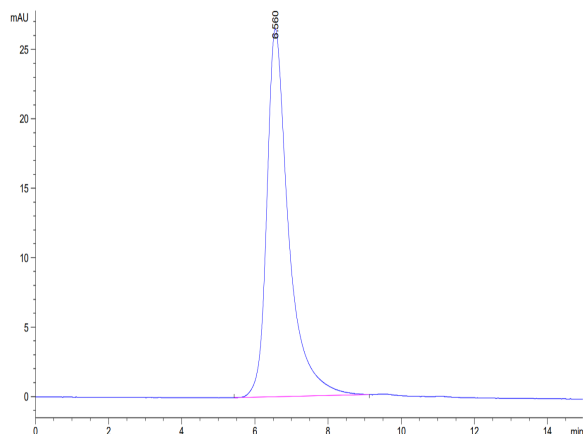
Assay Data

Bis-Tris PAGE



Rhesus macaque CDCP1 on Bis-Tris PAGE under reduced condition. The purity is greater than 95%..

SEC-HPLC



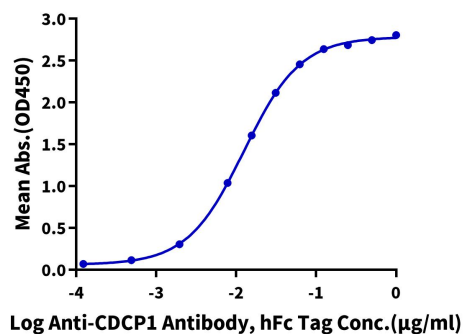
The purity of Rhesus macaque CDCP1 is greater than 95% as determined by SEC-HPLC.

Assay Data

ELISA Data

Rhesus macaque CDCP1, His Tag ELISA

0.5µg Rhesus macaque CDCP1, His Tag Per Well



Immobilized Rhesus macaque CDCP1 at 5µg/ml (100µl/Well) on the plate. Dose response curve for Anti-CDCP1 Antibody, hFc Tag with the EC50 of 12.6ng/ml determined by ELISA (QC Test).