

Biotinylated Rhesus macaque CDCP1 Protein, Ultra Low Endotoxin



Cat. No. CDC-CM401B-UL

Description	
Source	Recombinant Biotinylated Rhesus macaque CDCP1 Protein is expressed from HEK293 with His tag and Avi tag at the C-Terminus. It contains Phe30-Thr667.
Accession	XP_001114659.2
Molecular Weight	The protein has a predicted MW of 75 kDa. Due to glycosylation, the protein migrates to 90-115 kDa based on Bis-Tris PAGE result.
Endotoxin	Less than 0.01 EU per µg by the LAL method.
Purity	> 95% as determined by Bis-Tris PAGE > 95% as determined by HPLC

Formulation and Storage

Formulation	Lyophilized from 0.22µm filtered solution in PBS (pH 7.4). Normally 8% trehalose is added as protectant before lyophilization.
Reconstitution	Dissolve the lyophilized protein in distilled water. Please refer to the Certificate of Analysis for detailed instructions.
Storage	-20 to -80°C for 12 months as supplied from date of receipt. -80°C for 3 months after reconstitution. Recommend to aliquot the protein into smaller quantities for optimal storage. Please minimize freeze-thaw cycles.

Background

Tumor metastasis depends on the dynamic regulation of cell adhesion through β 1-integrin. The Cub-Domain Containing Protein-1, CDCP1, is a transmembrane glycoprotein which regulates cell adhesion. Overexpression and loss of CDCP1 have been observed in the same cancer types to promote metastatic progression.

Assay Data

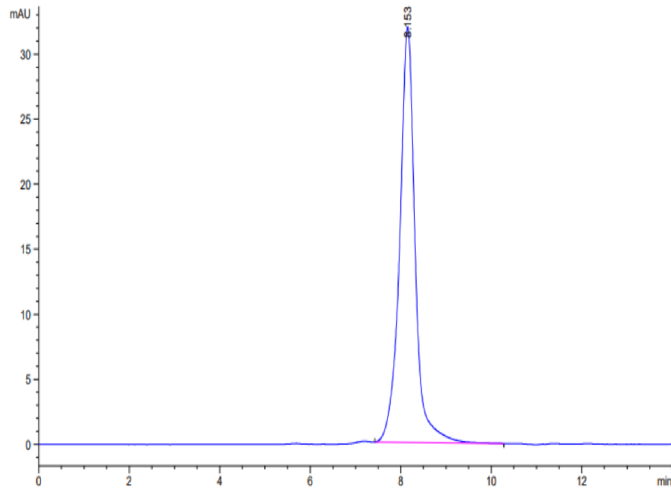
Bis-Tris PAGE



Biotinylated Rhesus macaque CDCP1 on Bis-Tris PAGE under reduced condition. The purity is greater than 95%.

SEC-HPLC

Assay Data

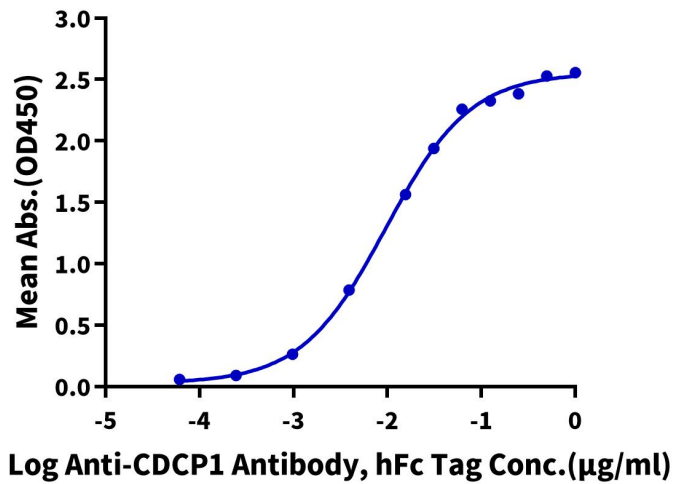


The purity of Biotinylated Rhesus macaque CDCP1 is greater than 95% as determined by SEC-HPLC.

ELISA Data

Biotinylated Cynomolgus CDCP-1, His Tag ELISA

0.1µg Biotinylated Cynomolgus CDCP-1, His Tag Per Well



Immobilized Biotinylated Rhesus macaque CDCP-1, His Tag at 1µg/ml (100µl/well) on the streptavidin precoated plate (5µg/ml). Dose response curve for Anti-CDCP1 Antibody, hFc Tag with the EC50 of 9.6ng/ml determined by ELISA (QC Test).