

# Biotinylated Rhesus macaque CDCP1 Protein

Cat. No. CDC-CM401B

## Description

|                         |   |
|-------------------------|---|
| <b>Source</b>           | Recombinant Biotinylated Rhesus macaque CDCP1 Protein is expressed from HEK293 with His tag and Avi tag at the C-Terminus.<br>It contains Ala29-Thr667. |
| <b>Accession</b>        | XP_001114659.2  |
| <b>Molecular Weight</b> | The protein has a predicted MW of 75 kDa. Due to glycosylation, the protein migrates to 90-115 kDa based on Bis-Tris PAGE result.                       |
| <b>Endotoxin</b>        | Less than 1EU per µg by the LAL method.   |
| <b>Purity</b>           | > 95% as determined by Bis-Tris PAGE<br>> 95% as determined by HPLC   |

## Formulation and Storage

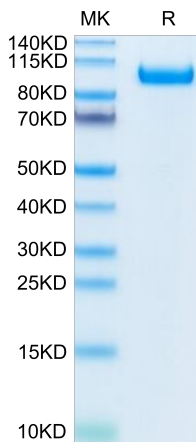
|                       |   |
|-----------------------|---|
| <b>Formulation</b>    | Lyophilized from 0.22µm filtered solution in PBS (pH 7.4). Normally 8% trehalose is added as protectant before lyophilization.  |
| <b>Reconstitution</b> | Centrifuge the tube before opening. Reconstituting to a concentration more than 100 µg/ml is recommended. Dissolve the lyophilized protein in distilled water.  |
| <b>Storage</b>        | -20 to -80°C for 12 months as supplied from date of receipt. -80°C for 3 months after reconstitution. Recommend to aliquot the protein into smaller quantities for optimal storage. Please minimize freeze-thaw cycles. |

## Background

Tumor metastasis depends on the dynamic regulation of cell adhesion through  $\beta$ 1-integrin. The Cub-Domain Containing Protein-1, CDCP1, is a transmembrane glycoprotein which regulates cell adhesion. Overexpression and loss of CDCP1 have been observed in the same cancer types to promote metastatic progression.

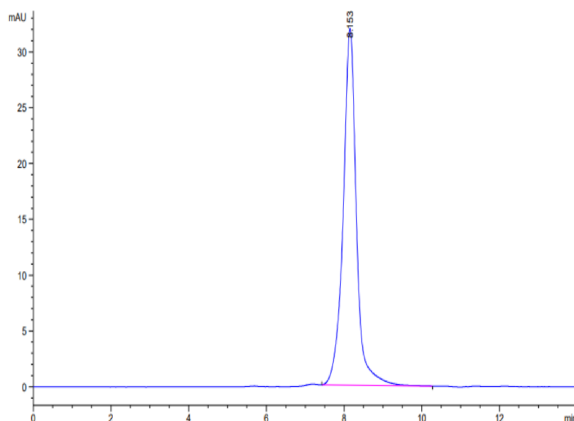
## Assay Data

### Bis-Tris PAGE



Biotinylated Rhesus macaque CDCP1 on Bis-Tris PAGE under reduced condition. The purity is greater than 95%.

### SEC-HPLC



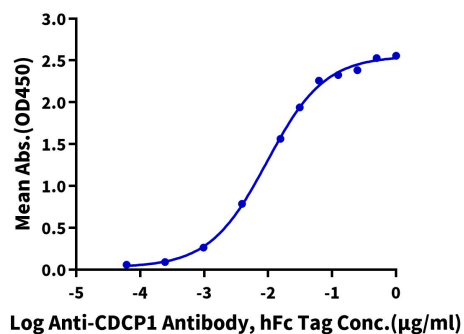
The purity of Biotinylated Rhesus macaque CDCP1 is greater than 95% as determined by SEC-HPLC.

Assay Data

ELISA Data

**Biotinylated Cynomolgus CDCP-1, His Tag ELISA**

0.1µg Biotinylated Cynomolgus CDCP-1, His Tag Per Well



Immobilized Biotinylated Rhesus macaque CDCP-1, His Tag at 1µg/ml (100µl/well) on the streptavidin precoated plate (5µg/ml). Dose response curve for Anti-CDCP1 Antibody, hFc Tag with the EC50 of 9.6ng/ml determined by ELISA (QC Test).