

# Human CDCP1 Protein, Ultra Low Endotoxin

Cat. No. CDC-HM101-UL

## Description

<b>Source</b>	Recombinant Human CDCP1 Protein is expressed from HEK293 with His tag at the C-Terminus. It contains Phe30-Leu666.
<b>Accession</b>	Q9H5V8-1
<b>Molecular Weight</b>	The protein has a predicted MW of 72.8 kDa. Due to glycosylation, the protein migrates to 100-130 kDa based on Bis-Tris PAGE result.
<b>Endotoxin</b>	Less than 0.01 EU per µg by the LAL method.
<b>Purity</b>	> 95% as determined by Bis-Tris PAGE > 95% as determined by HPLC

## Formulation and Storage

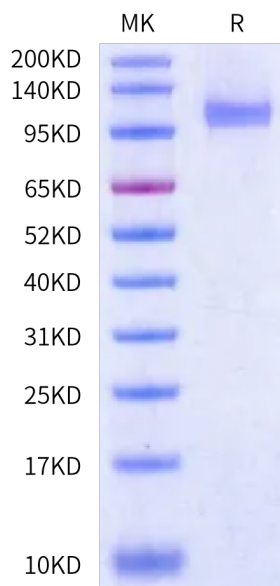
<b>Formulation</b>	Lyophilized from 0.22 µm filtered solution in PBS, 8% trehalose (pH 7.4).
<b>Reconstitution</b>	Dissolve the lyophilized protein in distilled water. Please refer to the Certificate of Analysis for detailed instructions.
<b>Storage</b>	-20 to -80°C for 24 months as supplied from date of receipt. -80°C for 3 months after reconstitution. Recommend to aliquot the protein into smaller quantities for optimal storage. Please minimize freeze-thaw cycles.

## Background

Tumor metastasis depends on the dynamic regulation of cell adhesion through  $\beta$ 1-integrin. The Cub-Domain Containing Protein-1, CDCP1, is a transmembrane glycoprotein which regulates cell adhesion. Overexpression and loss of CDCP1 have been observed in the same cancer types to promote metastatic progression.

## Assay Data

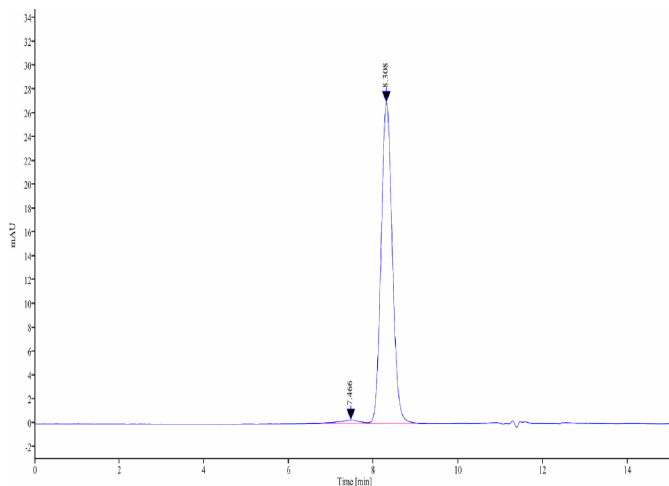
### Bis-Tris PAGE



Human CDCP1 on Bis-Tris PAGE under reduced condition. The purity is greater than 95%.

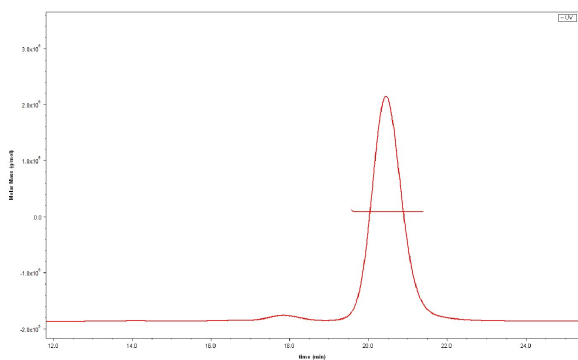
### SEC-HPLC

Assay Data



The purity of Human CDCP1 is greater than 95% as determined by SEC-HPLC.

SEC-MALS

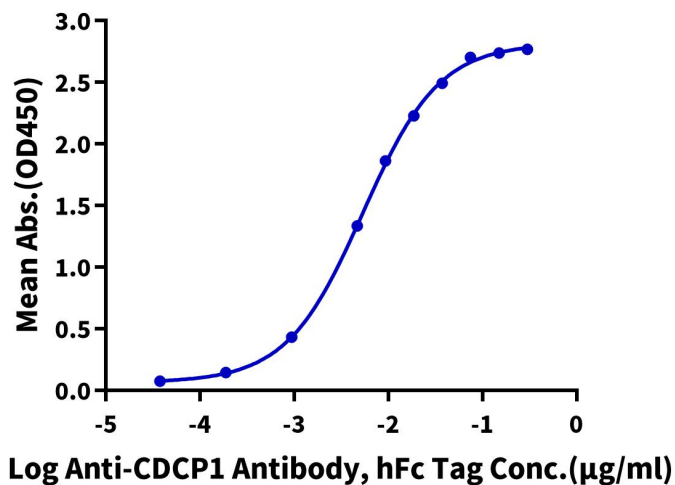


The purity of Human CDCP1 is greater than 95% and the molecular weight of this protein is around 80-105 kDa as determined by SEC-MALS.

ELISA Data

**Human CDCP1, His Tag ELISA**

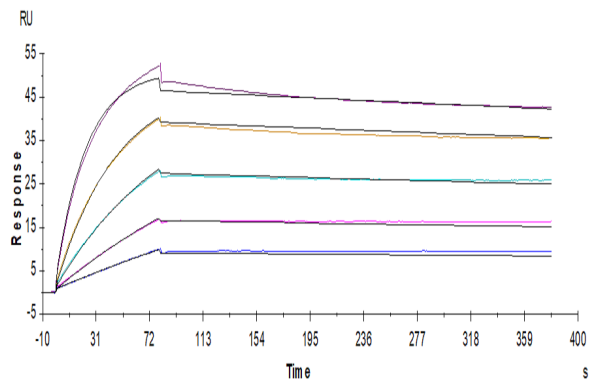
0.2µg Human CDCP1, His Tag Per Well



Immobilized Human CDCP1 at 2µg/ml (100µl/Well). Dose response curve for Anti-CDCP1 Antibody, hFc Tag with the EC<sub>50</sub> of 5.4ng/ml determined by ELISA (QC Test).

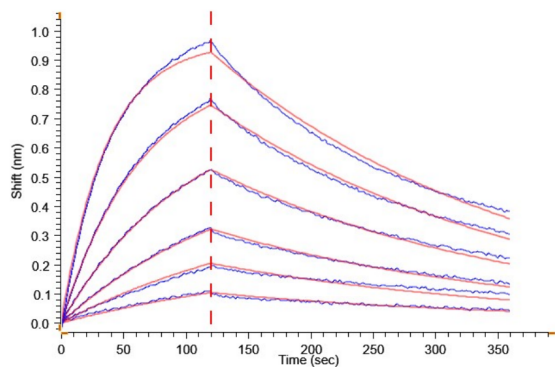
SPR Data

Assay Data



Human CDCP1, His Tag captured on CM5 Chip via anti-His antibody can bind Anti-CDCP1 Antibody, hFc Tag with an affinity constant of 0.18nM as determined in SPR assay (Biacore T200).

BLI Data



Loaded Anti-CDCP1 Antibody, hFc-Avi Tag on ProA-Biosensor can bind Human CDCP1, His Tag with an affinity constant of 17.00 nM as determined in BLI assay .