

Human CDCP1 ATF&CTF Protein

Cat. No. CDC-HM102

Description

Source	Recombinant Human CDCP1 ATF&CTF Protein is expressed from HEK293 with His tag at the C-terminus. It contains Phe30-Arg368 and Lys369-Thr667.
Accession	Q9H5V8-1
Molecular Weight	The protein has a predicted MW of 74.70 kDa. Due to glycosylation, the protein migrates to 90-110 kDa based on Bis-Tris PAGE result.
Endotoxin	Less than 1EU per μg by the LAL method.
Purity	> 95% as determined by Bis-Tris PAGE > 95% as determined by HPLC

Formulation and Storage

Formulation	Lyophilized from 0.22 μm filtered solution in PBS (pH 7.4). Normally 8% trehalose is added as protectant before lyophilization.
Reconstitution	Centrifuge the tube before opening. Reconstituting to a concentration more than 100 $\mu\text{g}/\text{ml}$ is recommended. Dissolve the lyophilized protein in distilled water.
Storage	-20 to -80°C for 12 months as supplied from date of receipt. -80°C for 3 months after reconstitution. Recommend to aliquot the protein into smaller quantities for optimal storage. Please minimize freeze-thaw cycles.

Background

Tumor metastasis depends on the dynamic regulation of cell adhesion through $\beta 1$ -integrin. The Cub-Domain Containing Protein-1, CDCP1, is a transmembrane glycoprotein which regulates cell adhesion. Overexpression and loss of CDCP1 have been observed in the same cancer types to promote metastatic progression.

Assay Data

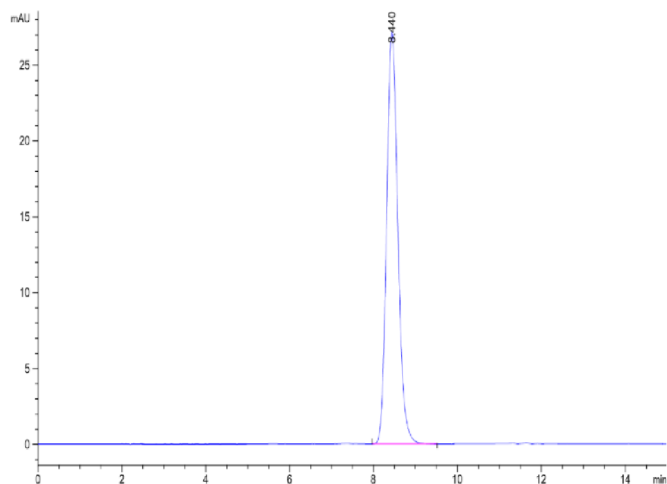
Bis-Tris PAGE



Human CDCP1 ATF&CTF on Bis-Tris PAGE under reduced condition. The purity is greater than 95%.

SEC-HPLC

Assay Data

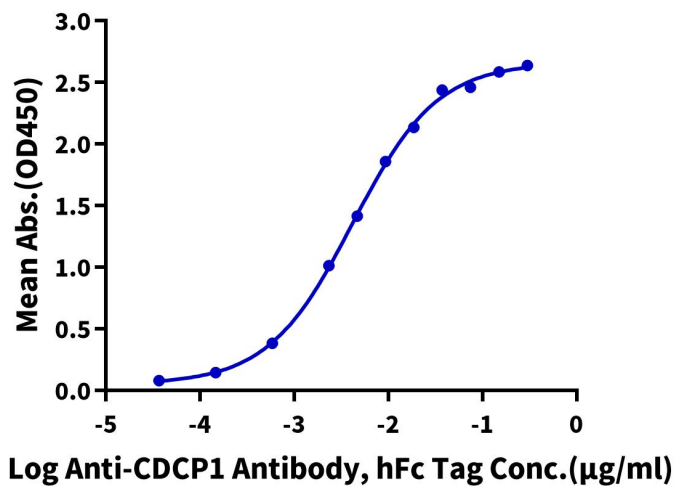


The purity of Human CDCP1 ATF&CTF is greater than 95% as determined by SEC-HPLC.

ELISA Data

Human CDCP1 ATF&CTF, His Tag ELISA

0.1 µg Human CDCP1 ATF&CTF, His Tag Per Well



Immobilized Human CDCP1 ATF&CTF, His Tag at 1 µg/ml (100 µl/well) on the plate. Dose response curve for Anti-CDCP1 Antibody, hFc Tag with the EC50 of 4.2 ng/ml determined by ELISA.