

Human CDCP1 ATF&CTF Protein

Cat. No. CDC-HM104



Description

Source	Recombinant Human CDCP1 ATF&CTF Protein is expressed from HEK293 with HA tag at the N-terminus of ATF and His tag at the C-terminus of CTF. It contains Phe30-Arg368 (ATF) and Lys369-Asp665 (CTF).
Accession	Q9H5V8-1
Molecular Weight	The protein has a predicted MW of 39.16 kDa (ATF) and 35.30 kDa (CTF). Due to glycosylation, the protein migrates to 52-65 kDa based on Bis-Tris PAGE result.
Endotoxin	Less than 0.1 EU per μg by the LAL method.
Purity	> 95% as determined by Bis-Tris PAGE > 85% as determined by HPLC

Formulation and Storage

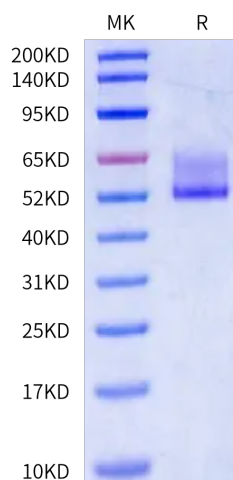
Formulation	Lyophilized from 0.22 μm filtered solution in PBS, 8% trehalose (pH 7.4).
Reconstitution	Dissolve the lyophilized protein in distilled water. Please refer to the Certificate of Analysis for detailed instructions.
Storage	-20 to -80°C for 12 months as supplied from date of receipt. -80°C for 3 months after reconstitution. Recommend to aliquot the protein into smaller quantities for optimal storage. Please minimize freeze-thaw cycles.

Background

Tumor metastasis depends on the dynamic regulation of cell adhesion through β 1-integrin. The Cub-Domain Containing Protein-1, CDCP1, is a transmembrane glycoprotein which regulates cell adhesion. Overexpression and loss of CDCP1 have been observed in the same cancer types to promote metastatic progression.

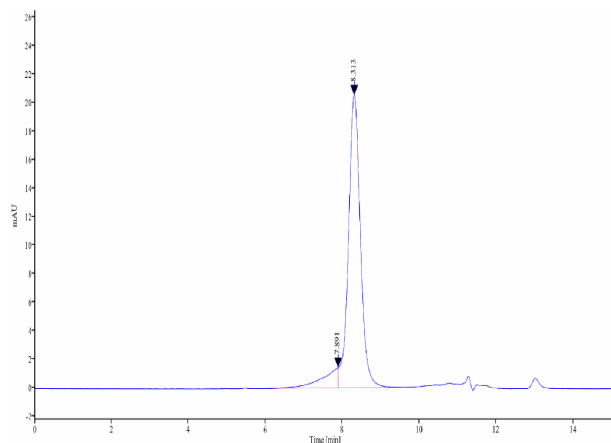
Assay Data

Bis-Tris PAGE



Human CDCP1 ATF&CTF on Bis-Tris PAGE under reduced condition. The purity is greater than 95%.

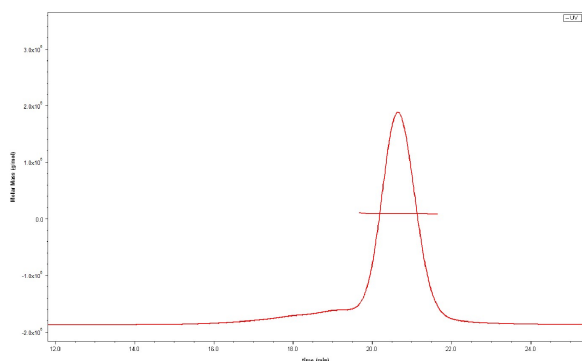
SEC-HPLC



The purity of Human CDCP1 ATF&CTF is greater than 85% as determined by SEC-HPLC.

Assay Data

SEC-MALS

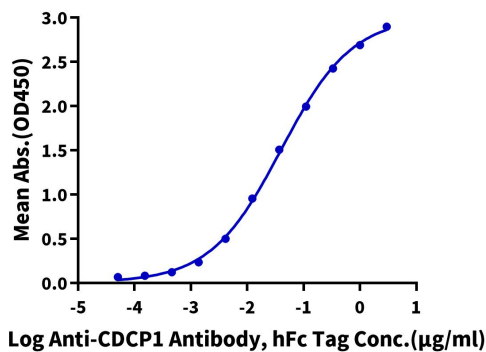


The purity of Human CDCP1 ATF&CTF is greater than 90% and the molecular weight of this protein is around 80-101 kDa as determined by SEC-MALS.

ELISA Data

Human CDCP1 ATF&CTF, His Tag ELISA

0.2µg Human CDCP1 ATF&CTF, His Tag Per Well



Immobilized Human CDCP1 ATF&CTF, His Tag at 2µg/ml (100µl/well) on the plate. Dose response curve for Anti-CDCP1 Antibody, hFc Tag with the EC50 of 39.9ng/ml determined by ELISA.