

# Human CDCP1 ATF (30-368) Protein

Cat. No. CDC-HM11D

## Description

<b>Source</b>	Recombinant Human CDCP1 ATF (30-368) Protein is expressed from HEK293 with His tag at the N-terminus. It contains Phe30-Arg368.
<b>Accession</b>	Q9H5V8-1
<b>Molecular Weight</b>	The protein has a predicted MW of 39.03 kDa. Due to glycosylation, the protein migrates to 55-70 kDa based on Bis-Tris PAGE result.
<b>Endotoxin</b>	Less than 1EU per $\mu\text{g}$ by the LAL method.
<b>Purity</b>	> 95% as determined by Bis-Tris PAGE > 95% as determined by HPLC

## Formulation and Storage

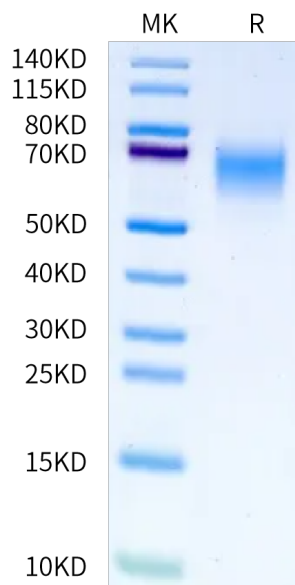
<b>Formulation</b>	Lyophilized from 0.22 $\mu\text{m}$ filtered solution in PBS (pH 7.4). Normally 8% trehalose is added as protectant before lyophilization.
<b>Reconstitution</b>	Centrifuge the tube before opening. Reconstituting to a concentration more than 100 $\mu\text{g}/\text{ml}$ is recommended. Dissolve the lyophilized protein in distilled water.
<b>Storage</b>	-20 to -80°C for 12 months as supplied from date of receipt. -80°C for 3 months after reconstitution. Recommend to aliquot the protein into smaller quantities for optimal storage. Please minimize freeze-thaw cycles.

## Background

Tumor metastasis depends on the dynamic regulation of cell adhesion through  $\beta 1$ -integrin. The Cub-Domain Containing Protein-1, CDCP1, is a transmembrane glycoprotein which regulates cell adhesion. Overexpression and loss of CDCP1 have been observed in the same cancer types to promote metastatic progression.

## Assay Data

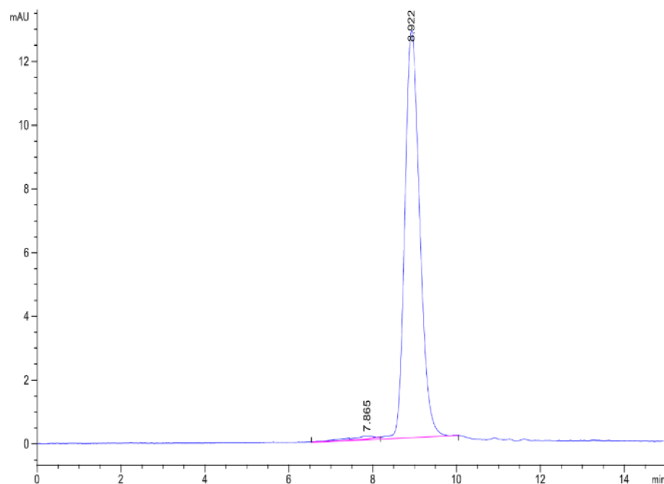
### Bis-Tris PAGE



Human CDCP1 ATF (30-368) on Bis-Tris PAGE under reduced condition. The purity is greater than 95%.

### SEC-HPLC

Assay Data

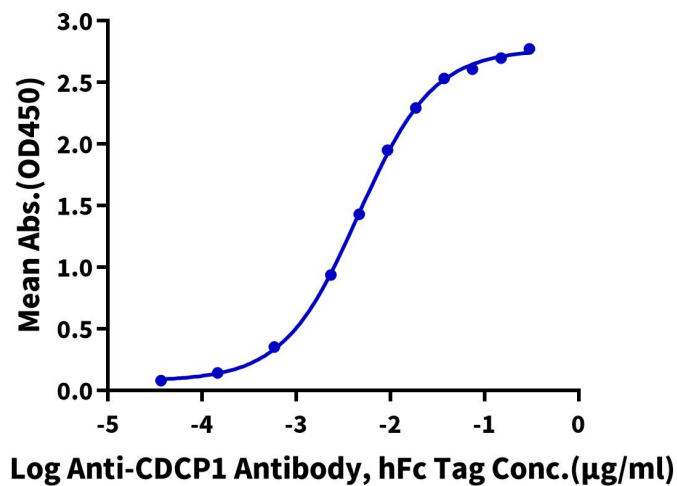


The purity of Human CDCP1 ATF (30-368) is greater than 95% as determined by SEC-HPLC.

ELISA Data

**Human CDCP1 ATF (30-368), His Tag ELISA**

0.2µg Human CDCP1 ATF (30-368), His Tag Per Well



Immobilized Human CDCP1 ATF (30-368), His Tag at 2µg/ml (100µl/well) on the plate. Dose response curve for Anti-CDCP1 Antibody, hFc Tag with the EC50 of 4.6ng/ml determined by ELISA.