

# Human CDCP1 (338-667) Protein

Cat. No. CDC-HM203

## Description

<b>Source</b>	Recombinant Human CDCP1 (338-667) Protein is expressed from HEK293 with hFc (IgG1) tag at the N-terminus. It contains Gln338-Thr667.
<b>Accession</b>	Q9H5V8-1
<b>Molecular Weight</b>	The protein has a predicted MW of 64.2 kDa. Due to glycosylation, the protein migrates to 75-90 kDa based on Bis-Tris PAGE result.
<b>Endotoxin</b>	Less than 0.1 EU per µg by the LAL method.
<b>Purity</b>	> 95% as determined by Bis-Tris PAGE > 95% as determined by HPLC

## Formulation and Storage

<b>Formulation</b>	Supplied as 0.22 µm filtered solution in PBS (pH 7.4).
<b>Storage</b>	Valid for 12 months from date of receipt when stored at -80°C. Recommend to aliquot the protein into smaller quantities for optimal storage. Please minimize freeze-thaw cycles.

## Background

Tumor metastasis depends on the dynamic regulation of cell adhesion through  $\beta$ 1-integrin. The Cub-Domain Containing Protein-1, CDCP1, is a transmembrane glycoprotein which regulates cell adhesion. Overexpression and loss of CDCP1 have been observed in the same cancer types to promote metastatic progression.

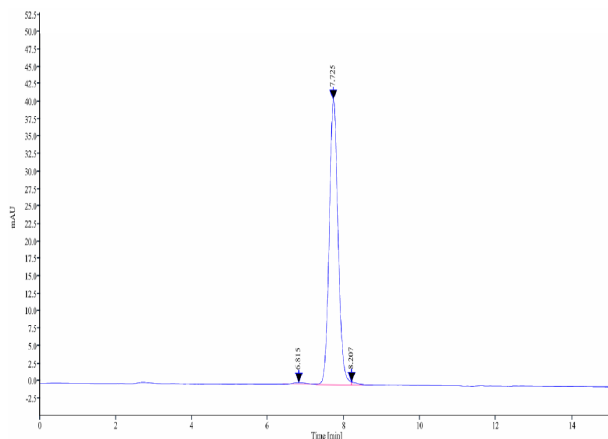
## Assay Data

### Bis-Tris PAGE



Human CDCP1 (338-667) on Bis-Tris PAGE under reduced condition. The purity is greater than 95%.

### SEC-HPLC



The purity of Human CDCP1 (338-667) is greater than 95% as determined by SEC-HPLC.