

Human CDCP1 (30-440) Protein

Cat. No. CDC-HM20D



Description

Source	Recombinant Human CDCP1 (30-440) Protein is expressed from HEK293 with hFc (IgG1) tag at the C-terminus. It contains Phe30-Pro440.
Accession	Q9H5V8
Molecular Weight	The protein has a predicted MW of 72.8 kDa. Due to glycosylation, the protein migrates to 90-110 kDa based on Bis-Tris PAGE result.
Endotoxin	Less than 1 EU per µg by the LAL method.
Purity	> 95% as determined by Bis-Tris PAGE > 90% as determined by HPLC

Formulation and Storage

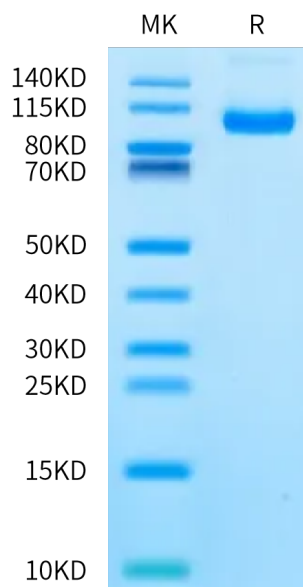
Formulation	Supplied as 0.22 µm filtered solution in PBS, 8% trehalose (pH 7.4).
Storage	Valid for 12 months from date of receipt when stored at -80°C. Recommend to aliquot the protein into smaller quantities for optimal storage. Please minimize freeze-thaw cycles.

Background

Tumor metastasis depends on the dynamic regulation of cell adhesion through β 1-integrin. The Cub-Domain Containing Protein-1, CDCP1, is a transmembrane glycoprotein which regulates cell adhesion. Overexpression and loss of CDCP1 have been observed in the same cancer types to promote metastatic progression.

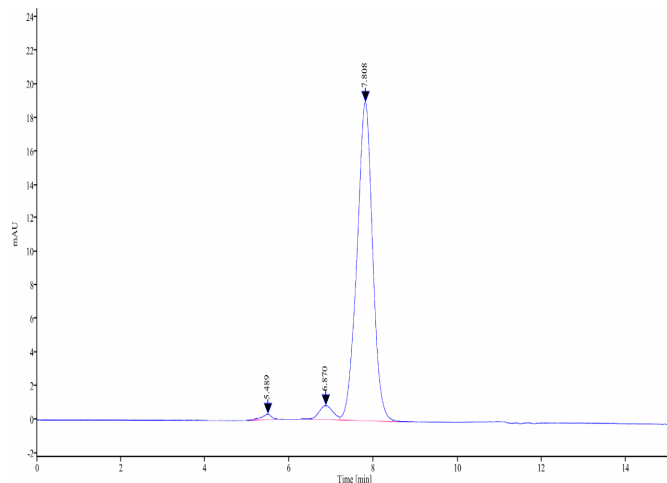
Assay Data

Bis-Tris PAGE



Human CDCP1 (30-440) on Bis-Tris PAGE under reduced condition. The purity is greater than 95%.

SEC-HPLC



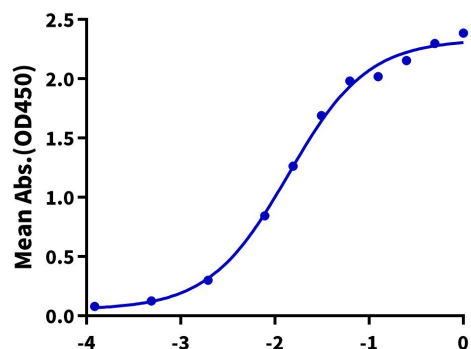
The purity of Human CDCP1 (30-440) is greater than 90% as determined by SEC-HPLC.

Assay Data

ELISA Data

Human CDCP1 (30-440), hFc Tag ELISA

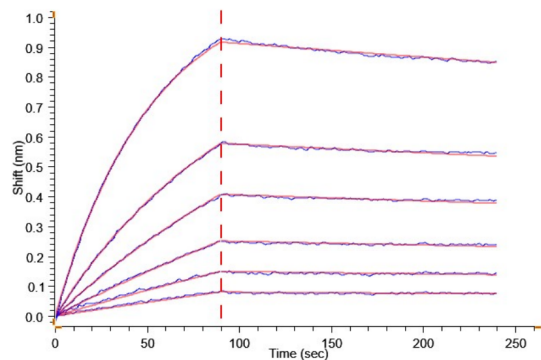
0.1µg Human CDCP1 (30-440), hFc Tag Per Well



Immobilized Human CDCP1 (30-440), hFc Tag at 1µg/ml (100µl/well) on the plate. Dose response curve for Biotinylated Anti-CDCP1 Antibody, hFc Tag with the EC50 of 13.9ng/ml determined by ELISA.

Log Biotinylated Anti-CDCP1 Antibody, hFc Tag Conc.(µg/ml)

BLI Data



Loaded Biotinylated Anti-CDCP1 Antibody, hFc Tag on Streptavidin-Biosensor can bind Human CDCP1 (30-440) with an affinity constant of 5.44 nM as determined in BLI assay .