

# Biotinylated Human CDCP1 Protein

Cat. No. CDC-HM401B

## Description

<b>Source</b>	Recombinant Biotinylated Human CDCP1 Protein is expressed from HEK293 with His tag and Avi tag at the C-Terminus. It contains Phe30-Leu666.
<b>Accession</b>	Q9H5V8-1
<b>Molecular Weight</b>	The protein has a predicted MW of 74.6 kDa. Due to glycosylation, the protein migrates to 85-100 kDa based on Tris-Bis PAGE result.
<b>Endotoxin</b>	Less than 1EU per µg by the LAL method.
<b>Purity</b>	> 95% as determined by Tris-Bis PAGE > 95% as determined by HPLC

## Formulation and Storage

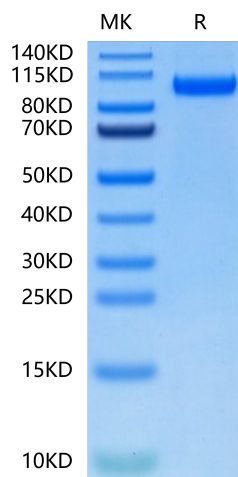
<b>Formulation</b>	Lyophilized from 0.22µm filtered solution in PBS (pH 7.4). Normally 8% trehalose is added as protectant before lyophilization.
<b>Reconstitution</b>	Centrifuge the tube before opening. Reconstituting to a concentration more than 100 µg/ml is recommended. Dissolve the lyophilized protein in distilled water.
<b>Storage</b>	-20 to -80°C for 12 months as supplied from date of receipt. -20 to -80°C for 3-6 months in unopened state after reconstitution. 2-8°C for 2-7 days after reconstitution. Recommend to aliquot the protein into smaller quantities for optimal storage. Please minimize freeze-thaw cycles.

## Background

Tumor metastasis depends on the dynamic regulation of cell adhesion through  $\beta$ 1-integrin. The Cub-Domain Containing Protein-1, CDCP1, is a transmembrane glycoprotein which regulates cell adhesion. Overexpression and loss of CDCP1 have been observed in the same cancer types to promote metastatic progression.

## Assay Data

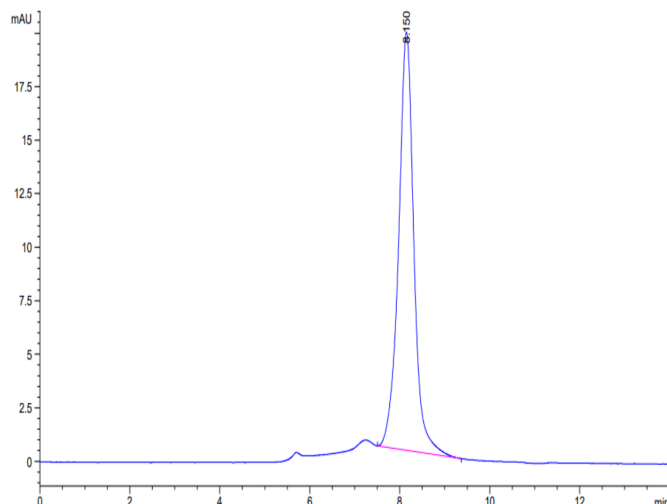
### Tris-Bis PAGE



Biotinylated Human CDCP1 on Tris-Bis PAGE under reduced condition. The purity is greater than 95%.

### SEC-HPLC

Assay Data

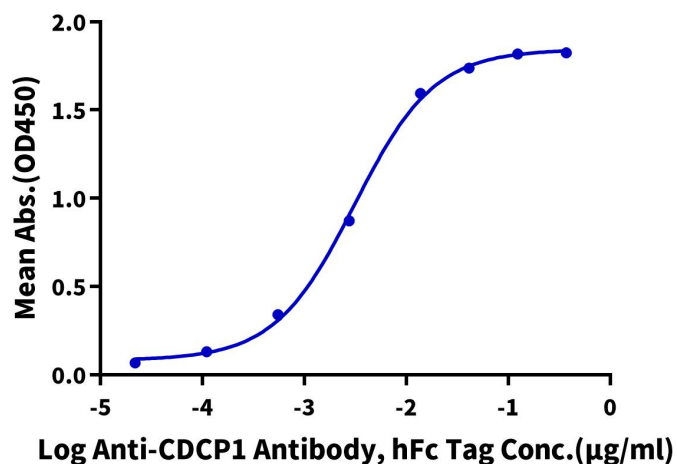


The purity of Biotinylated Human CDCP1 is greater than 95% as determined by SEC-HPLC.

ELISA Data

**Biotinylated Human CDCP1, His Tag ELISA**

0.05µg Biotinylated Human CDCP1, His Tag Per Well



Immobilized Biotinylated Human CDCP1, His Tag at 0.5µg/ml (100µl/Well) on streptavidin (5µg/ml) precoated plate. Dose response curve for Anti-CDCP1 Antibody, hFc Tag with the EC50 of 3.1ng/ml determined by ELISA.