

Rat CDCP1 Protein

Cat. No. CDC-RM101

Description

Source	Recombinant Rat CDCP1 Protein is expressed from Expi293 with His tag at the C-terminal. It contains Ser29-Thr666.
Accession	D3ZVA1
Molecular Weight	The protein has a predicted MW of 73.09 kDa. Due to glycosylation, the protein migrates to 90-115 kDa based on Tris-Bis PAGE result.
Endotoxin	Less than 1EU per μg by the LAL method.
Purity	> 95% as determined by Tris-Bis PAGE > 95% as determined by HPLC

Formulation and Storage

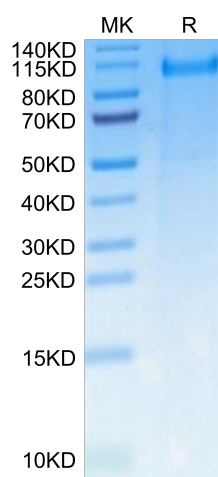
Formulation	Supplied as 0.22 μm filtered solution in PBS (pH 7.4). Please dilute to the desired concentration according to the concentration of the solution shown on the product label.
Storage	Valid for 12 months from date of receipt when stored at -80°C. Recommend to aliquot the protein into smaller quantities for optimal storage. Please do not repeated freeze-thaw cycles.

Background

Tumor metastasis depends on the dynamic regulation of cell adhesion through β 1-integrin. The Cub-Domain Containing Protein-1, CDCP1, is a transmembrane glycoprotein which regulates cell adhesion. Overexpression and loss of CDCP1 have been observed in the same cancer types to promote metastatic progression.

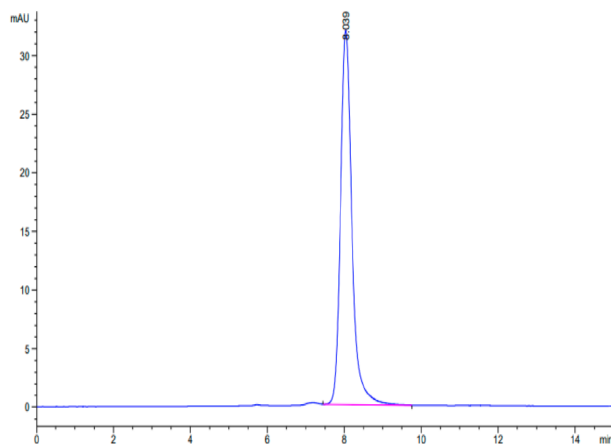
Assay Data

Tris-Bis PAGE



Rat CDCP1 on Tris-Bis PAGE under reduced condition. The purity is greater than 95%.

SEC-HPLC



The purity of Rat CDCP1 is greater than 95% as determined by SEC-HPLC.