

Biotinylated Human CD3E/CD3 epsilon Protein

Cat. No. CDE-HM401B



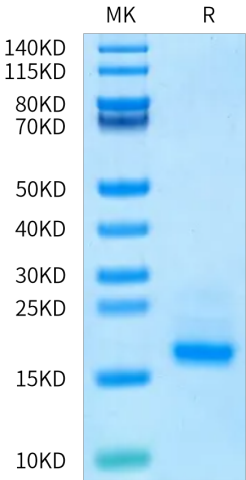
Description	
Source	Recombinant Biotinylated Human CD3E/CD3 epsilon Protein is expressed from HEK293 with His tag and Avi tag at the C-terminus. It contains Asp23-Asp126.
Accession	P07766
Molecular Weight	The protein has a predicted MW of 14.66 kDa. Due to glycosylation, the protein migrates to 16-20 kDa based on Bis-Tris PAGE result.
Endotoxin	Less than 1 EU per µg by the LAL method.
Purity	> 95% as determined by Bis-Tris PAGE

Formulation and Storage	
Formulation	Supplied as 0.22 µm filtered solution in PBS (pH 7.4).
Storage	Valid for 12 months from date of receipt when stored at -80°C. Recommend to aliquot the protein into smaller quantities for optimal storage. Please minimize freeze-thaw cycles.

Background	
CD3E, is a single-pass type I membrane protein.CD3 (cluster of differentiation 3) T cell co-receptor helps to activate both the cytotoxic T cell (CD8 naive T cells) and also T helper cells (CD4 naive T cells). It consists of a protein complex and is composed of four distinct chains. In mammals, the complex contains a CD3γ chain, a CD3δ chain, and two CD3ε chains.	

Assay Data

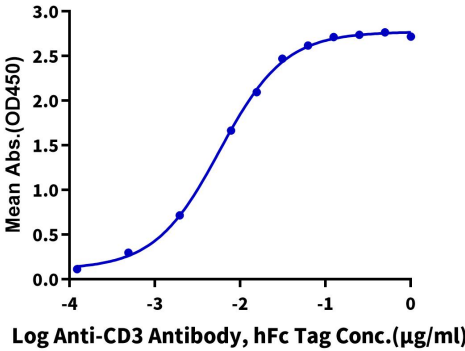
Bis-Tris PAGE



Biotinylated Human CD3E on Bis-Tris PAGE under reduced condition. The purity is greater than 95%.

ELISA Data

Biotinylated Human CD3E, His-Avi Tag ELISA
0.05µg Biotinylated Human CD3E, His-Avi Tag Per Well



Immobilized Biotinylated Human CD3E, His-Avi Tag at 0.5µg/ml (100µl/Well) on streptavidin (5µg/ml) precoated plate. Dose response curve for Anti-CD3 Antibody, hFc Tag with the EC50 of 5.8ng/ml determined by ELISA.