

Human CD3E/CD3 epsilon Protein, Ultra Low Endotoxin

Cat. No. CDE-HM601-UL

Description

Source	Recombinant Human CD3E/CD3 epsilon Protein is expressed from HEK293 with Llama Fc tag at the C-terminus. It contains Asp23-Asp126.
Accession	P07766
Molecular Weight	The protein has a predicted MW of 39.06 kDa. Due to glycosylation, the protein migrates to 48-55 kDa based on Bis-Tris PAGE result.
Endotoxin	Less than 0.01 EU per µg by the LAL method.
Purity	> 95% as determined by Bis-Tris PAGE > 95% as determined by HPLC

Formulation and Storage

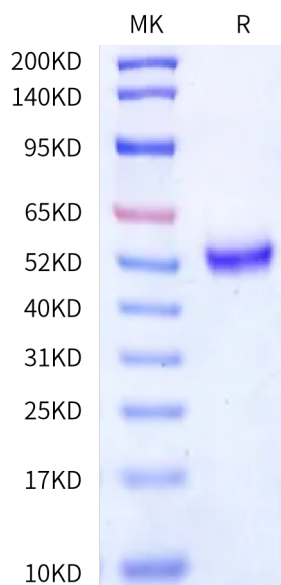
Formulation	Lyophilized from 0.22 µm filtered solution in PBS (pH 7.4). Normally 8% trehalose is added as protectant before lyophilization.
Reconstitution	Dissolve the lyophilized protein in distilled water. Please refer to the Certificate of Analysis for detailed instructions.
Storage	-20 to -80°C for 12 months as supplied from date of receipt. -80°C for 3 months after reconstitution. Recommend to aliquot the protein into smaller quantities for optimal storage. Please minimize freeze-thaw cycles.

Background

CD3E, is a single-pass type I membrane protein. CD3 (cluster of differentiation 3) T cell co-receptor helps to activate both the cytotoxic T cell (CD8 naive T cells) and also T helper cells (CD4 naive T cells). It consists of a protein complex and is composed of four distinct chains. In mammals, the complex contains a CD3γ chain, a CD3δ chain, and two CD3ε chains.

Assay Data

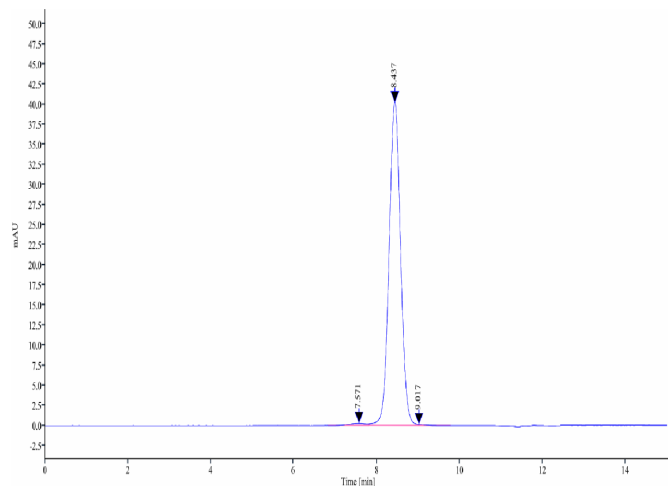
Bis-Tris PAGE



Human CD3E on Bis-Tris PAGE under reduced condition. The purity is greater than 95%.

SEC-HPLC

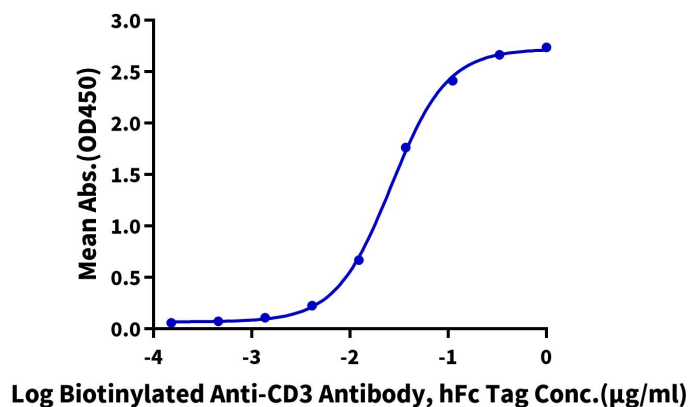
Assay Data



The purity of Human CD3E is greater than 95% as determined by SEC-HPLC.

ELISA Data

Human CD3E, Llama Fc Tag ELISA
0.05µg Human CD3E, Llama Fc Tag Per Well



Immobilized Human CD3E, Llama Fc Tag at 0.5µg/ml (100µl/well) on the plate. Dose response curve for Biotinylated Anti-CD3 Antibody, hFc Tag with the EC50 of 26.5ng/ml determined by ELISA.