

# Human CDH3/Cadherin 3 Protein

Cat. No. CDH-HM103

## Description

<b>Source</b>	Recombinant Human CDH3/Cadherin 3 Protein is expressed from HEK293 with His tag at the C-Terminus. It contains Asp108-Gly654.
<b>Accession</b>	P22223-1
<b>Molecular Weight</b>	The protein has a predicted MW of 64.32 kDa. Due to glycosylation, the protein migrates to 70-80 kDa based on Tris-Bis PAGE result.
<b>Endotoxin</b>	Less than 1EU per µg by the LAL method.
<b>Purity</b>	> 95% as determined by Tris-Bis PAGE > 95% as determined by HPLC

## Formulation and Storage

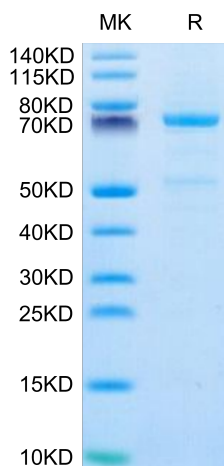
<b>Formulation</b>	Lyophilized from 0.22µm filtered solution in PBS (pH 7.4). Normally 8% trehalose is added as protectant before lyophilization.
<b>Reconstitution</b>	Centrifuge the tube before opening. Reconstituting to a concentration more than 100 µg/ml is recommended. Dissolve the lyophilized protein in distilled water.
<b>Storage</b>	-20 to -80°C for 24 months as supplied from date of receipt. -80°C for 3-6 months after reconstitution. 2-8°C for 2-7 days after reconstitution. Recommend to aliquot the protein into smaller quantities for optimal storage. Please minimize freeze-thaw cycles.

## Background

Placental-Cadherin (CDH3), a cell adhesion molecule, is associated with the function of cells to bind with other cells and the extracellular matrix (ECM). CDH3 is highly expressed in many malignancies, and has been proved it could be a serum marker to monitor colorectal cancer. Inhibited CDH3 expression could upregulate E-cadherin, downregulated N-cadherin, which may control invasion and migration.

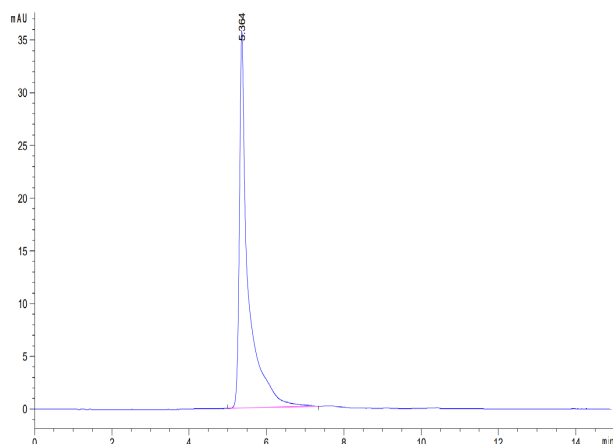
## Assay Data

### Tris-Bis PAGE



Human CDH3 on Tris-Bis PAGE under reduced condition. The purity is greater than 95%.

### SEC-HPLC



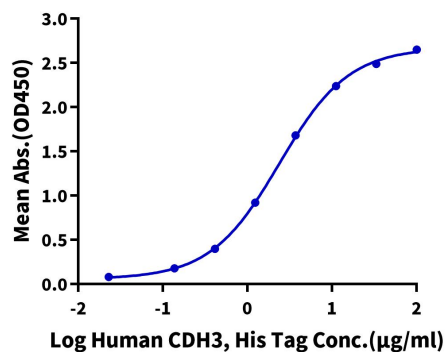
The purity of Human CDH3 is greater than 95% as determined by SEC-HPLC.

Assay Data

ELISA Data

**Human CDH3, His Tag ELISA**

0.2µg Anti-CDH3 Antibody, hFc Tag Per Well



Immobilized Anti-CDH3 Antibody, hFc Tag at 2µg/ml (100µl/Well) on the plate. Dose response curve for Human CDH3, His Tag with the EC50 of 2.4µg/ml determined by ELISA.