

# Human CDH11/Cadherin-11 Protein

Cat. No. CDH-HM111

## Description

<b>Source</b>	Recombinant Human CDH11/Cadherin-11 Protein is expressed from Expi293 with His tag at the C-terminal. It contains Gly54-Thr617.
<b>Accession</b>	AAA35622
<b>Molecular Weight</b>	The protein has a predicted MW of 66.32 kDa. Due to glycosylation, the protein migrates to 67-70 kDa based on Tris-Bis PAGE result.
<b>Endotoxin</b>	Less than 1EU per $\mu\text{g}$ by the LAL method.
<b>Purity</b>	> 95% as determined by Tris-Bis PAGE

## Formulation and Storage

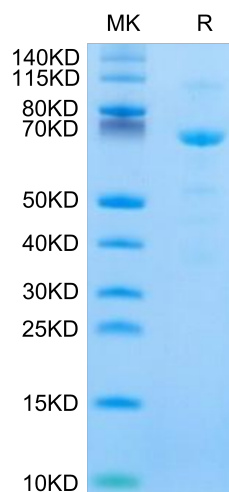
<b>Formulation</b>	Supplied as 0.22 $\mu\text{m}$ filtered solution in PBS (pH 7.4). Please dilute to the desired concentration according to the concentration of the solution shown on the product label.
<b>Storage</b>	Valid for 12 months from date of receipt when stored at -80°C. Recommend to aliquot the protein into smaller quantities for optimal storage. Please do not repeated freeze-thaw cycles.

## Background

CDH11 belongs to a group of transmembrane proteins that are principally located in adherens junctions. CDH11 mediates homophilic cell-to-cell adhesion, which may promote the development of cirrhosis. CDH11 expression was positively correlated with liver fibrosis in patients with cirrhosis, and could therefore be a prognostic factor in patients with liver fibrosis.

## Assay Data

### Tris-Bis PAGE



Human CDH11/Cadherin-11 on Tris-Bis PAGE under reduced condition. The purity is greater than 95%.