

# Human CDH6/Cadherin 6 (EC1del) Protein

Cat. No. CDH-HM11D

## Description

<b>Source</b>	Recombinant Human CDH6/Cadherin 6 (EC1del) Protein is expressed from HEK293 with His tag at the C-terminus. It contains Thr160-Ala615.
<b>Accession</b>	P55285-1
<b>Molecular Weight</b>	The protein has a predicted MW of 51.88 kDa. Due to glycosylation, the protein migrates to 70-90 kDa based on Bis-Tris PAGE result.
<b>Endotoxin</b>	Less than 0.1 EU per $\mu\text{g}$ by the LAL method.
<b>Purity</b>	> 95% as determined by Bis-Tris PAGE

## Formulation and Storage

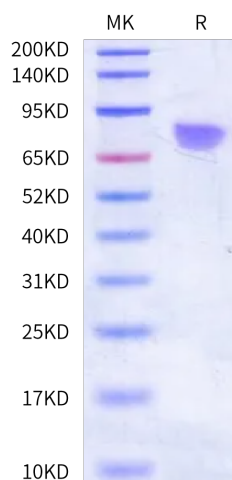
<b>Formulation</b>	Lyophilized from 0.22 $\mu\text{m}$ filtered solution in PBS (pH 7.4). Normally 8% trehalose is added as protectant before lyophilization.
<b>Reconstitution</b>	Dissolve the lyophilized protein in distilled water. Please refer to the Certificate of Analysis for detailed instructions.
<b>Storage</b>	-20 to -80°C for 12 months as supplied from date of receipt. -80°C for 3 months after reconstitution. Recommend to aliquot the protein into smaller quantities for optimal storage. Please minimize freeze-thaw cycles.

## Background

Cadherin 6 (CDH6) is an adhesion molecule localizing to the endometrial luminal epithelial cell surface in the mid-secretory/receptive phase and knockdown of CDH6 in the Ishikawa cells (receptive endometrial epithelial cell line) compromises cell integrity.

## Assay Data

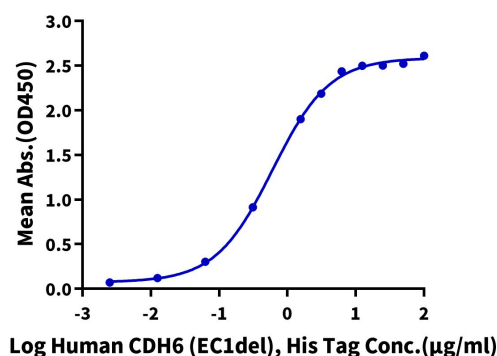
### Bis-Tris PAGE



Human CDH6 (EC1del) on Bis-Tris PAGE under reduced condition. The purity is greater than 95%.

### ELISA Data

**Human CDH6 (EC1del), His Tag ELISA**  
0.5 $\mu\text{g}$  Anti-CDH6 Antibody, hFc Tag Per Well



Immobilized Anti-CDH6 Antibody, hFc Tag at 5 $\mu\text{g}/\text{ml}$  (100 $\mu\text{l}/\text{well}$ ) on the plate. Dose response curve for Human CDH6 (EC1del), His Tag with the EC50 of 0.60 $\mu\text{g}/\text{ml}$  determined by ELISA.