

# Human CDH16/Cadherin 16 Protein

Cat. No. CDH-HM126

## Description

<b>Source</b>	Recombinant Human CDH16/Cadherin 16 Protein is expressed from HEK293 with His tag at the N-terminus. It contains Lys19-Ala786.
<b>Accession</b>	O75309-1
<b>Molecular Weight</b>	The protein has a predicted MW of MW 84.37 kDa. Due to glycosylation, the protein migrates to 90-110 kDa based on Tris-Bis PAGE result.
<b>Endotoxin</b>	Less than 1EU per µg by the LAL method.
<b>Purity</b>	> 95% as determined by Tris-Bis PAGE > 95% as determined by HPLC

## Formulation and Storage

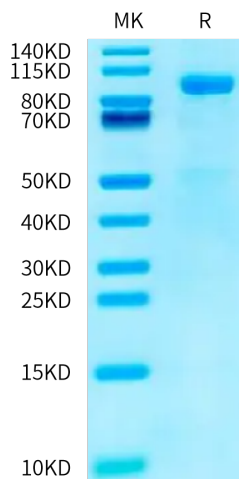
<b>Formulation</b>	Lyophilized from 0.22 µm filtered solution in 50mM Tris, 100mM NaCl (pH 8.0). Normally 8% trehalose is added as protectant before lyophilization.
<b>Reconstitution</b>	Centrifuge the tube before opening. Reconstituting to a concentration more than 100 µg/ml is recommended. Dissolve the lyophilized protein in distilled water.
<b>Storage</b>	-20 to -80°C for 12 months as supplied from date of receipt. -20 to -80°C for 3-6 months in unopened state after reconstitution. 2-8°C for 2-7 days after reconstitution. Recommend to aliquot the protein into smaller quantities for optimal storage. Please minimize freeze-thaw cycles.

## Background

Cadherin (CDH)16/kidney-specific-cadherin was first described as a kidney-specific adhesion molecule and thereafter found expressed also in the thyroid gland. CDH16 is a thyroid-selective and hormone-dependent adhesion protein that might play a role during thyroid development and that may be a useful marker to monitor thyroid carcinomas.

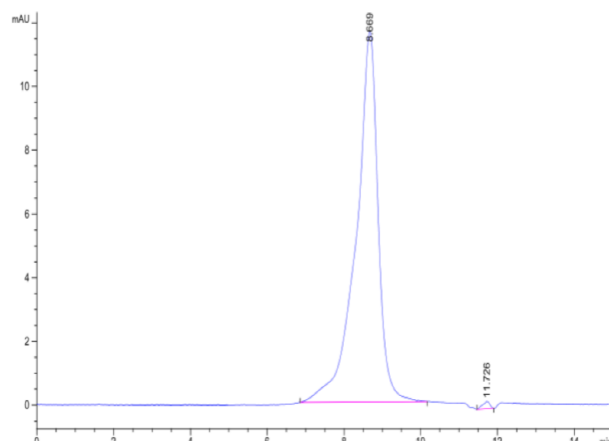
## Assay Data

### Tris-Bis PAGE



Human CDH16 on Tris-Bis PAGE under reduced condition. The purity is greater than 95%.

### SEC-HPLC



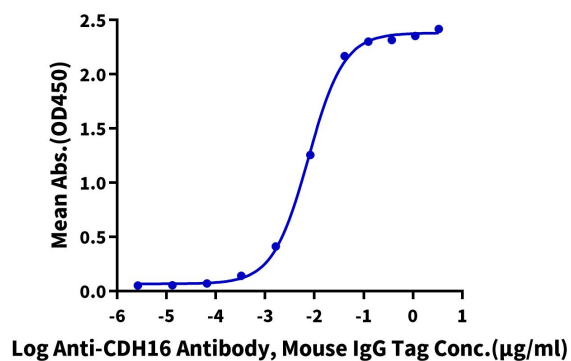
The purity of Human CDH16 is greater than 95% as determined by SEC-HPLC.

Assay Data

ELISA Data

**Human CDH16, His Tag ELISA**

0.05µg Human CDH16, His Tag Per Well



Immobilized Human CDH16, His Tag at 0.5µg/ml (100µl/well) on the plate. Dose response curve for Anti-CDH16 Antibody, Mouse IgG Tag with the EC50 of 7.5ng/ml determined by ELISA.