

# Human CDH6/Cadherin 6 (EC2del) Protein

Cat. No. CDH-HM12D

## Description

|                         |  |
|-------------------------|--|
| <b>Source</b>           | Recombinant Human CDH6/Cadherin 6 (EC2del) Protein is expressed from HEK293 with His tag at the C-terminus.<br>It contains Thr19-Phe159 & Pro269-Ala615. |
| <b>Accession</b>        | P55285-1   |
| <b>Molecular Weight</b> | The protein has a predicted MW of 56.17 kDa. Due to glycosylation, the protein migrates to 65-85 kDa based on Bis-Tris PAGE result.                      |
| <b>Endotoxin</b>        | Less than 0.1 EU per $\mu\text{g}$ by the LAL method.  |
| <b>Purity</b>           | > 95% as determined by Bis-Tris PAGE<br>> 90% as determined by HPLC  |

## Formulation and Storage

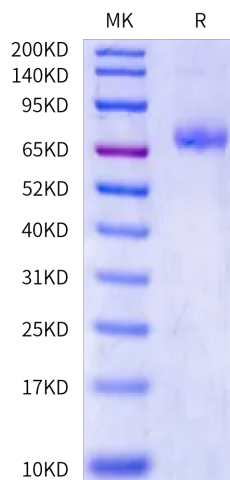
|                       |   |
|-----------------------|---|
| <b>Formulation</b>    | Lyophilized from 0.22 $\mu\text{m}$ filtered solution in PBS (pH 7.4). Normally 8% trehalose is added as protectant before lyophilization.  |
| <b>Reconstitution</b> | Dissolve the lyophilized protein in distilled water. Please refer to the Certificate of Analysis for detailed instructions.   |
| <b>Storage</b>        | -20 to -80°C for 12 months as supplied from date of receipt. -80°C for 3 months after reconstitution. Recommend to aliquot the protein into smaller quantities for optimal storage. Please minimize freeze-thaw cycles. |

## Background

Cadherin 6 (CDH6) is an adhesion molecule localizing to the endometrial luminal epithelial cell surface in the mid-secretory/receptive phase and knockdown of CDH6 in the Ishikawa cells (receptive endometrial epithelial cell line) compromises cell integrity.

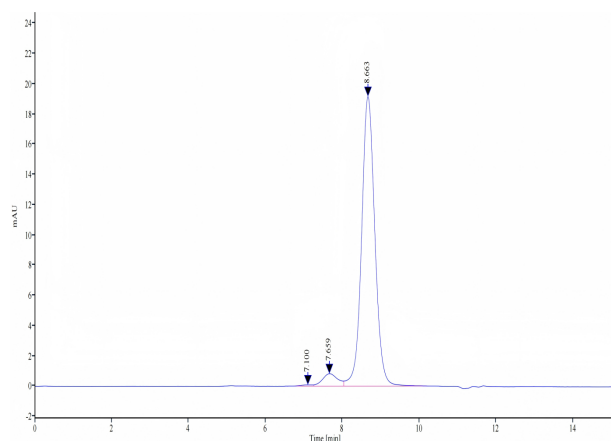
## Assay Data

### Bis-Tris PAGE



Human CDH6 (EC2del) on Bis-Tris PAGE under reduced condition. The purity is greater than 95%.

### SEC-HPLC



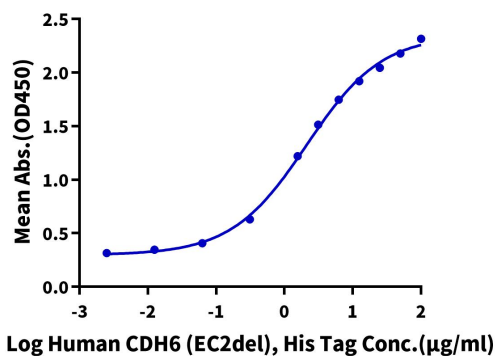
The purity of Human CDH6 (EC2del) is greater than 90% as determined by SEC-HPLC.

Assay Data

ELISA Data

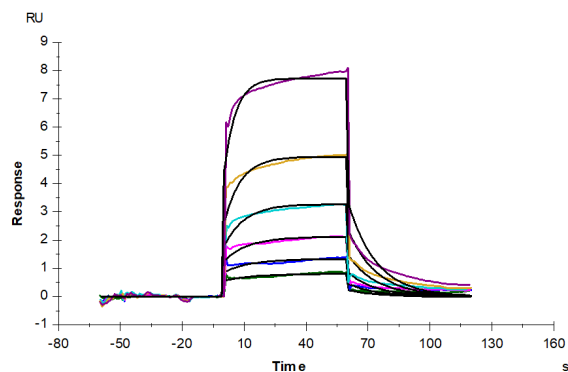
**Human CDH6 (EC2del), His Tag ELISA**

0.5µg Anti-CDH6 Antibody 2, hFc Tag Per Well



Immobilized Anti-CDH6 Antibody 2, hFc Tag at 5µg/ml (100µl/well) on the plate. Dose response curve for Human CDH6 (EC2del), His Tag with the EC50 of 2.11µg/ml determined by ELISA.

SPR Data



Anti-CDH6 Antibody 1, hFc Tag captured on CM5 Chip via Protein A can bind Human CDH6 (EC2del), His Tag with an affinity constant of 5.74 µM as determined in SPR assay (Biacore S200).