

Human CDH6/Cadherin 6 (EC3del) Protein

Cat. No. CDH-HM1D3

Description

Source	Recombinant Human CDH6/Cadherin 6 (EC3del) Protein is expressed from HEK293 with His tag at the C-terminus. It contains Thr19-Phe268 and Ser384-Ala615.
Accession	P55285-1
Molecular Weight	The protein has a predicted MW of 55.18 kDa. Due to glycosylation, the protein migrates to 85-95 kDa based on Bis-Tris PAGE result.
Endotoxin	Less than 0.1 EU per µg by the LAL method.
Purity	> 95% as determined by Bis-Tris PAGE > 90% as determined by HPLC

Formulation and Storage

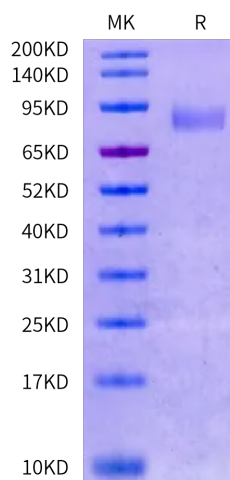
Formulation	Lyophilized from 0.22 µm filtered solution in PBS, 8% trehalose (pH 7.4).
Reconstitution	Dissolve the lyophilized protein in distilled water. Please refer to the Certificate of Analysis for detailed instructions.
Storage	-20 to -80°C for 12 months as supplied from date of receipt. -80°C for 3 months after reconstitution. Recommend to aliquot the protein into smaller quantities for optimal storage. Please minimize freeze-thaw cycles.

Background

Cadherin 6 (CDH6) is an adhesion molecule localizing to the endometrial luminal epithelial cell surface in the mid-secretory/receptive phase and knockdown of CDH6 in the Ishikawa cells (receptive endometrial epithelial cell line) compromises cell integrity.

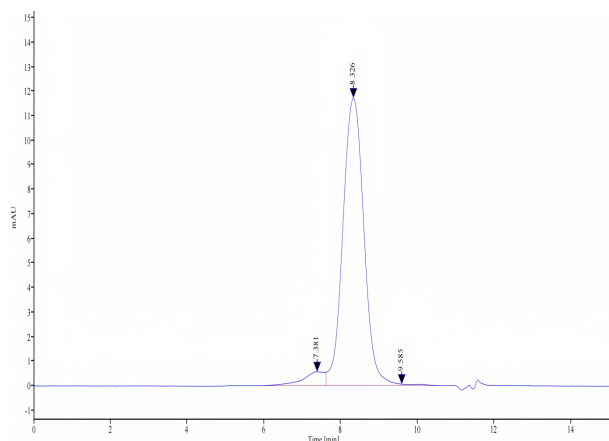
Assay Data

Bis-Tris PAGE



Human CDH6 (EC3del) on Bis-Tris PAGE under reduced condition. The purity is greater than 95%.

SEC-HPLC



The purity of Human CDH6 (EC3del) is greater than 95% as determined by SEC-HPLC.

Human CDH6/Cadherin 6 (EC3del) Protein

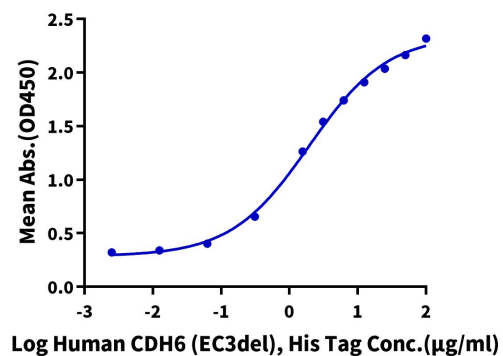
Cat. No. CDH-HM1D3

Assay Data

ELISA Data

Human CDH6 (EC3del), His Tag ELISA

0.5µg Anti-CDH6 Antibody, hFc Tag Per Well



Immobilized Anti-CDH6 Antibody, hFc Tag at 5µg/ml (100µl/well) on the plate. Dose response curve for Human CDH6 (EC3del), His Tag with the EC50 of 1.95µg/ml determined by ELISA.