

Human CDH17/Cadherin 17 Domain 1&2 Protein, Ultra Low Endotoxin

Cat. No. CDH-HM1D5-UL

Description

Source	Recombinant Human CDH17/Cadherin 17 Domain 1&2 Protein is expressed from HEK293 with His tag at the C-Terminus. It contains Pro30-Pro244.
Accession	Q12864
Molecular Weight	The protein has a predicted MW of 25.15 kDa. Due to glycosylation, the protein migrates to 35-45 kDa based on Bis-Tris PAGE result.
Endotoxin	Less than 0.01 EU per µg by the LAL method.
Purity	> 95% as determined by Bis-Tris PAGE

Formulation and Storage

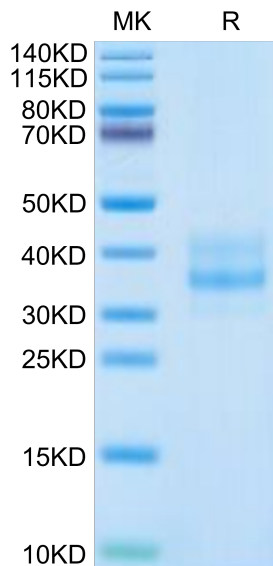
Formulation	Lyophilized from 0.22µm filtered solution in PBS (pH 7.4). Normally 8% trehalose is added as protectant before lyophilization.
Reconstitution	Dissolve the lyophilized protein in distilled water. Please refer to the Certificate of Analysis for detailed instructions.
Storage	-20 to -80°C for 12 months as supplied from date of receipt. -80°C for 3 months after reconstitution. Recommend to aliquot the protein into smaller quantities for optimal storage. Please minimize freeze-thaw cycles.

Background

Liver-intestine cadherin (CDH17) has been known to function as a tumor stimulator and diagnostic marker for almost two decades. In vivo studies showed CDH17 knockout resulted in apoptotic PC tumor death through activating caspase-3 activity. Taken together, CDH17 functions as an oncogenic molecule critical to PC growth by regulating tumor apoptosis signaling pathways and CDH17 could be targeted to develop an anti-PC therapeutic approach.

Assay Data

Bis-Tris PAGE



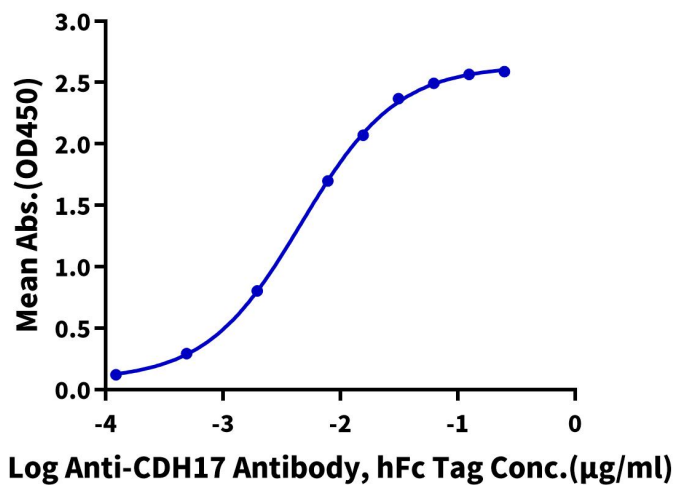
Human CDH17 Domain 1&2 on Bis-Tris PAGE under reduced condition. The purity is greater than 95%.

ELISA Data

Assay Data

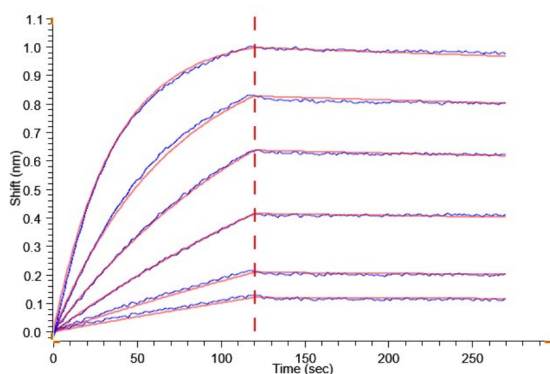
Human CDH17 Domain 1&2, His Tag ELISA

0.1µg Human CDH17 Domain 1&2, His Tag Per Well



Immobilized Human CDH17 Domain 1&2, His Tag at 1µg/ml (100µl/well) on the plate. Dose response curve for Anti-CDH17 Antibody, hFc Tag with the EC50 of 4.7ng/ml determined by ELISA (QC Test).

BLI Data



Loaded Anti-CDH17 Ab., hFc-Avi Tag on ProA-Biosensor can bind Human CDH17 Domain 1&2, His Tag with an affinity constant of 1.51 nM as determined in BLI assay .