

Human CDH17/Cadherin 17 Protein

Cat. No. CDH-HM217

Description

| | |
|-------------------------|--|
| Source | Recombinant Human CDH17/Cadherin 17 Protein is expressed from HEK293 with hFc tag at the C-Terminus. It contains Gln23-Met787. |
| Accession | Q12864 |
| Molecular Weight | The protein has a predicted MW of 111.73 kDa. Due to glycosylation, the protein migrates to 113-135 kDa based on Tris-Bis PAGE result. |
| Endotoxin | Less than 1EU per µg by the LAL method. |
| Purity | > 95% as determined by Tris-Bis PAGE > 95% as determined by HPLC |

Formulation and Storage

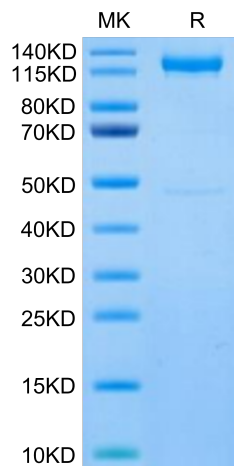
| | |
|-----------------------|---|
| Formulation | Lyophilized from 0.22µm filtered solution in PBS (pH 7.4). Normally 8% trehalose is added as protectant before lyophilization. |
| Reconstitution | Centrifuge the tube before opening. Reconstituting to a concentration more than 100 µg/ml is recommended. Dissolve the lyophilized protein in distilled water. |
| Storage | -20 to -80°C for 12 months as supplied from date of receipt. -20 to -80°C for 3-6 months in unopened state after reconstitution. 2-8°C for 2-7 days after reconstitution. Recommend to aliquot the protein into smaller quantities for optimal storage. Please minimize freeze-thaw cycles. |

Background

Liver-intestine cadherin (CDH17) has been known to function as a tumor stimulator and diagnostic marker for almost two decades. In vivo studies showed CDH17 knockout resulted in apoptotic PC tumor death through activating caspase-3 activity. Taken together, CDH17 functions as an oncogenic molecule critical to PC growth by regulating tumor apoptosis signaling pathways and CDH17 could be targeted to develop an anti-PC therapeutic approach.

Assay Data

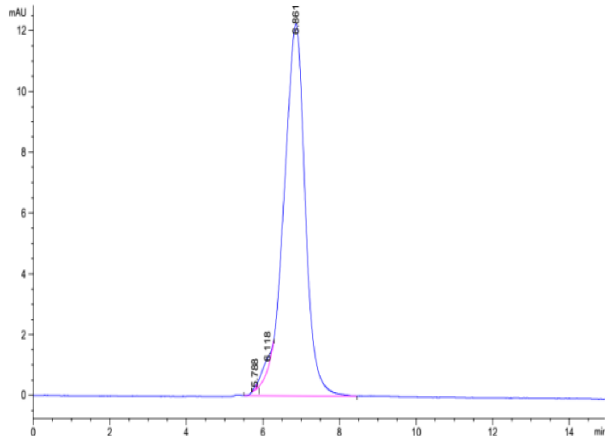
Tris-Bis PAGE



Human CDH17 on Tris-Bis PAGE under reduced condition. The purity is greater than 95%.

SEC-HPLC

Assay Data

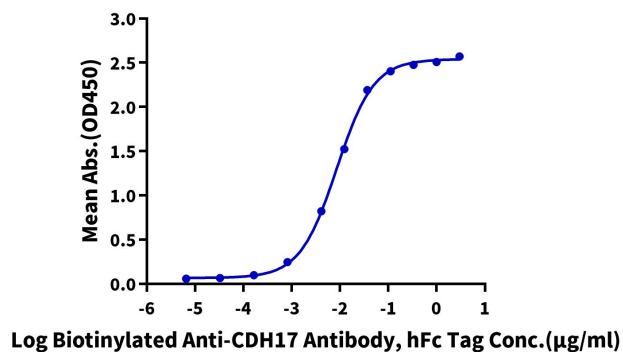


The purity of Human CDH17 is greater than 95% as determined by SEC-HPLC.

Assay Data

ELISA Data

Human CDH17, hFc Tag ELISA
0.05µg Human CDH17, hFc Tag Per Well



Immobilized Human CDH17, hFc Tag at 0.5µg/ml (100µl/well) on the plate. Dose response curve for Biotinylated Anti-CDH17 Antibody, hFc Tag with the EC50 of 8.6ng/ml determined by ELISA.