

Biotinylated Human CDH6/Cadherin 6 Protein, Ultra Low Endotoxin



Cat. No. CDH-HM406B-UL

Description	
Source	Recombinant Biotinylated Human CDH6/Cadherin 6 Protein is expressed from HEK293 with His tag and Avi tag at the C-terminus. It contains Thr19-Ala615.
Accession	P55285-1
Molecular Weight	The protein has a predicted MW of 69.29 kDa. Due to glycosylation, the protein migrates to 75-90 kDa based on Bis-Tris PAGE result.
Endotoxin	Less than 0.01 EU per µg by the LAL method.
Purity	> 95% as determined by Bis-Tris PAGE > 90% as determined by HPLC

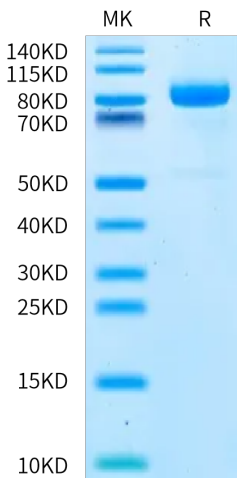
Formulation and Storage	
Formulation	Lyophilized from 0.22 µm filtered solution in PBS (pH 7.4). Normally 8% trehalose is added as protectant before lyophilization.
Reconstitution	Dissolve the lyophilized protein in distilled water. Please refer to the Certificate of Analysis for detailed instructions.
Storage	-20 to -80°C for 12 months as supplied from date of receipt. -80°C for 3 months after reconstitution. Recommend to aliquot the protein into smaller quantities for optimal storage. Please minimize freeze-thaw cycles.

Background

Cadherin 6 (CDH6) is an adhesion molecule localizing to the endometrial luminal epithelial cell surface in the mid-secretory/receptive phase and knockdown of CDH6 in the Ishikawa cells (receptive endometrial epithelial cell line) compromises cell integrity.

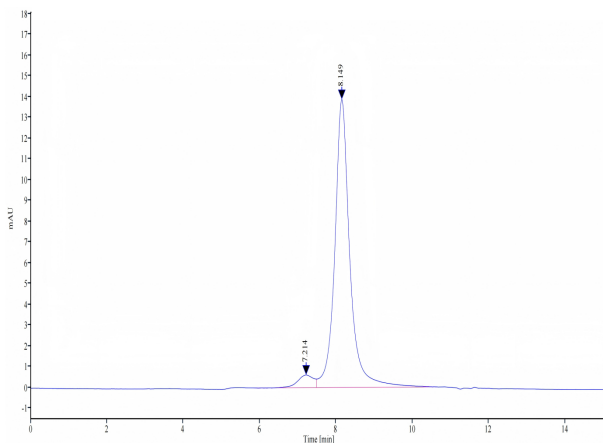
Assay Data

Bis-Tris PAGE



Biotinylated Human CDH6 on Bis-Tris PAGE under reduced condition. The purity is greater than 95%.

SEC-HPLC



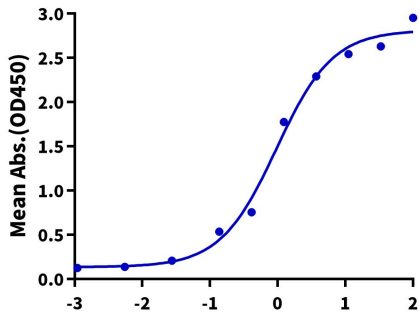
The purity of Biotinylated Human CDH6 is greater than 90% as determined by SEC-HPLC.

Assay Data

ELISA Data

Biotinylated Human CDH6, His-Avi Tag ELISA

0.5µg Anti-CDH6 Antibody, hFc Tag Per Well



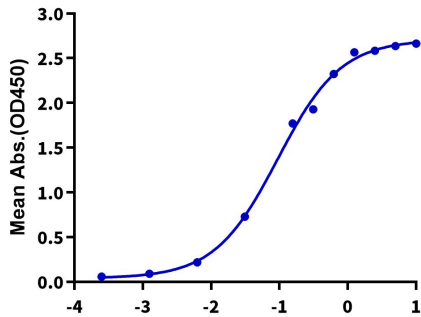
Immobilized Anti-CDH6 Antibody, hFc Tag at 5µg/ml (100µl/well) on the plate. Dose response curve for Biotinylated Human CDH6, His-Avi Tag with the EC50 of 0.96µg/ml determined by ELISA.

Log Biotinylated Human CDH6, His-Avi Tag Conc. (µg/ml)

ELISA Data

Biotinylated Human CDH6, His-Avi Tag ELISA

0.5µg Biotinylated Human CDH6, His-Avi Tag Per Well



Immobilized Biotinylated Human CDH6, His-Avi Tag at 5µg/ml (100µl/well) on the streptavidin precoated plate (5µg/ml). Dose response curve for Anti-CDH6 Antibody, Rabbit IgG Tag with the EC50 of 94.4ng/ml determined by ELISA.

Log Anti-CDH6 Antibody, Rabbit IgG Tag Conc. (µg/ml)