

# Biotinylated Human CDH6/Cadherin 6 Protein

Cat. No. CDH-HM406B

## Description

<b>Source</b>	Recombinant Biotinylated Human CDH6/Cadherin 6 Protein is expressed from HEK293 with His tag and Avi tag at the C-terminus. It contains Thr19-Ala615.
<b>Accession</b>	P55285-1
<b>Molecular Weight</b>	The protein has a predicted MW of 69.29 kDa. Due to glycosylation, the protein migrates to 75-90 kDa based on Bis-Tris PAGE result.
<b>Endotoxin</b>	Less than 1EU per µg by the LAL method.
<b>Purity</b>	>95% as determined by Bis-Tris PAGE >90% as determined by HPLC

## Formulation and Storage

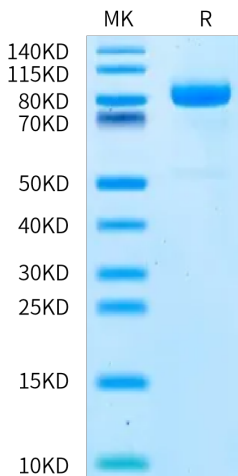
<b>Formulation</b>	Lyophilized from 0.22 µm filtered solution in PBS (pH 7.4). Normally 8% trehalose is added as protectant before lyophilization.
<b>Reconstitution</b>	Centrifuge the tube before opening. Reconstituting to a concentration more than 100 µg/ml is recommended. Dissolve the lyophilized protein in distilled water.
<b>Storage</b>	-20 to -80°C for 12 months as supplied from date of receipt. -80°C for 3 months after reconstitution. Recommend to aliquot the protein into smaller quantities for optimal storage. Please minimize freeze-thaw cycles.

## Background

Cadherin 6 (CDH6) is an adhesion molecule localizing to the endometrial luminal epithelial cell surface in the mid-secretory/receptive phase and knockdown of CDH6 in the Ishikawa cells (receptive endometrial epithelial cell line) compromises cell integrity.

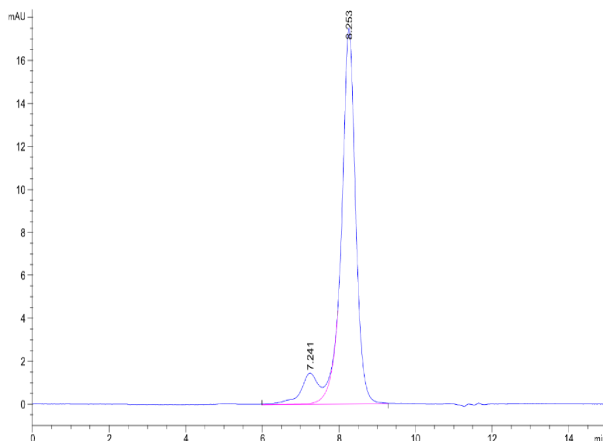
## Assay Data

### Bis-Tris PAGE



Biotinylated Human CDH6 on Bis-Tris PAGE under reduced condition. The purity is greater than 95%.

### SEC-HPLC



The purity of Biotinylated Human CDH6 is greater than 90% as determined by SEC-HPLC.

# Biotinylated Human CDH6/Cadherin 6 Protein

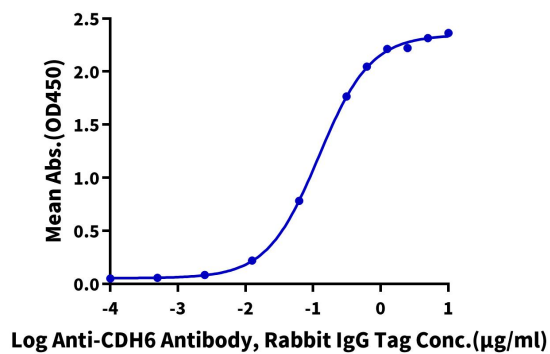
Cat. No. CDH-HM406B

## Assay Data

### ELISA Data

#### Biotinylated Human CDH6, His-Avi Tag ELISA

0.5µg Biotinylated Human CDH6, His-Avi Tag Per Well



Immobilized Biotinylated Human CDH6, His-Avi Tag at 5µg/ml (100µl/well) on the streptavidin precoated plate (5µg/ml). Dose response curve for Anti-CDH6 Antibody, Rabbit IgG Tag with the EC50 of 0.12µg/ml determined by ELISA (QC Test).